



# TAPM V4. User Manual.

Peter Hurley  
CSIRO Marine and Atmospheric Research Internal Report No. 5  
October 2008

ISBN: 978-1-921424-73-1

## **TABLE OF CONTENTS**

1	INTRODUCTION.....	2
2	GETTING STARTED.....	2
2.1	Configuring and Running the Software.....	2
2.2	The Databases.....	3
2.3	Some Limitations of the Modelling Approach .....	4
3	TAPM_GUI.....	4
3.1	Selecting Inputs, Accessing Databases, and Running the Model .....	4
3.1.1	Optional Inputs – Meteorology .....	9
3.1.2	Optional Inputs – Pollution .....	12
3.1.3	File – User-Defined Databases .....	17
3.2	Analysing Outputs .....	18
3.2.1	GIS Visualisation .....	19
3.2.2	Meteorology .....	21
3.2.3	Pollution .....	24
3.3	Utilities .....	26
4	TAPM FILES .....	28
4.1	Meteorological Data Assimilation File (*.obs).....	29
4.2	Emission Files (*.pse, *.lse, *.ase, *.gse, *.bse, *.whe, *.vpx, *.vdx, *.vlx, and *.vpv) .....	30
4.3	Building File (*.bld) .....	32
4.4	Background Concentration File (*.cbg) .....	33
5	ACKNOWLEDGEMENTS .....	34
6	REFERENCES.....	34

## 1 INTRODUCTION

The Air Pollution Model (TAPM) predicts three-dimensional meteorology and air pollution concentrations. Technical details of the model equations, parameterisations, and numerical methods are described in the Technical Paper by Hurley (2008). A summary of some verification studies using TAPM is also given in Hurley *et al.* (2008). This User Manual describes how to run TAPM from the Graphical User Interface (GUI) provided with the model.

TAPM\_GUI is a PC-based interface that allows the user to set up and run TAPM under the Windows operating systems. It is connected to databases of terrain, vegetation and soil type, leaf area index, sea-surface temperature, and synoptic-scale meteorological analyses for various regions around the world. Model inputs can be selected and saved, the model can be run and model outputs can be analysed through the interface.

Section 2 of this Manual describes how to configure and run the software, lists the databases of input information available to the software, and discusses some limitations of the modelling approach. Section 3 gives details on the use of TAPM\_GUI and Section 4 describes the input and output files used by TAPM.

## 2 GETTING STARTED

### 2.1 Configuring and Running the Software

To install/uninstall TAPM V4 software, the user needs to be logged-on as a user with **Administrative privileges** in some versions of the Windows operating system.

#### *Uninstalling previous versions*

Before installing a new version of TAPM\_GUI or the GIS Visualisation Software, the user must first uninstall previous versions of the software using the Start-Settings-Control Panel-Add/Remove Programs utility in Windows.

#### *Installing TAPM V4*

The TAPM software is in a directory called TAPM\_V4.0\_setup that contains a setup.exe installation program. TAPM\_GUI can be installed by running setup.exe either manually or by using the Start-Settings-Control Panel-Add/Remove Programs utility in Windows. It is recommended that the directory name should be something like C:\TAPM. Note that the directory name must not contain spaces (e.g., 'Program Files'), as spaces in directory or file names can cause problems in some of the command-line batch files used by TAPM\_GUI, and the name is restricted to be less than or equal to fifteen characters. After installing the software, the GUI can be started by running the TAPM\_GUI.EXE program from the installed directory.

#### *Installing the GIS V1.5*

The GIS visualisation software is in a directory called GIS\_V1.5\_setup that contains a setup.exe installation program. The GIS can be installed by running setup.exe either manually or by using the Start-Settings-Control Panel-Add/Remove Programs utility in Windows. It is recommended that the directory name should be something like C:\GIS. Note that the directory name must not contain spaces (e.g., 'Program Files'), as spaces in directory or file names can cause problems in some of the command-line batch files used by TAPM\_GUI. After installing the software, the GIS can be started by running the GIS\_PC1.EXE program from the installed directory, or through the TAPM\_GUI interface using the Utilities menu or Analyse Output – GIS Visualisation Window.

## *TAPM V4 Free Updates*

TAPM V4.0.x updates (if available) that fix known bugs, can be downloaded from the CSIRO ftp server ([ftp.dar.csiro.au](ftp://ftp.dar.csiro.au)) using the following commands at the Windows Command Prompt:

```
ftp ftp.dar.csiro.au
tapm00                                (note that the userid is case sensitive)
TAPM_USER                             (note that the password is case sensitive)
binary
mget tapm*
bye
```

The update to tapm.exe (and possibly other files) is contained in the tapm\_v4.0.x.zip file (e.g. tapm\_v4.0.1.zip), and needs to be extracted using Windows or winzip software, and then copied over the existing installed tapm.exe file on your PC. The TAPM V4.0.x version number will be shown when the model (tapm.exe) is run – note that the GUI will still show V4.0 in the ‘Help – About TAPM’ Window, unless an update to tapm\_gui.exe is also available.

## **2.2 The Databases**

Some databases are provided with the software free of charge to TAPM users, and include gridded global terrain height, vegetation and soil type, Leaf Area Index (LAI), sea-surface temperature, and synoptic-scale meteorology. A condition of the use of these datasets with TAPM is that the data sources must be acknowledged in any publications, and that the data cannot be passed on to or used by unlicensed TAPM users.

The surface information datasets provided with the software are

- Global terrain height data on a longitude/latitude grid at 30-second grid spacing (approximately 1 km) based on public domain data available from the US Geological Survey, Earth Resources Observation Systems (EROS) Data Center Distributed Active Archive Center (EDC DAAC).
- Australian terrain height data on a longitude/latitude grid at 9-second grid spacing (approximately 0.3 km) based on data from Geoscience Australia.
- Global land cover characterisation data on a longitude/latitude grid at 30-second grid spacing (approximately 1 km) based on public domain data available from the US Geological Survey, Earth Resources Observation Systems (EROS) Data Center Distributed Active Archive Center (EDC DAAC).
- Global soil texture types on a longitude/latitude grid at 2-degree grid spacing (approximately 4 km) based on FAO/UNESCO soil classes dataset.
- Global 5-year monthly mean LAI on a longitude/latitude grid at 2-degree grid spacing (approximately 4 km) based on Boston University LAI datasets (derived from MODIS products).
- Rand’s global 10-year monthly mean sea surface temperatures on a longitude/latitude grid at 1-degree grid spacing (approximately 100 km). They are based on public domain information available from the US National Center for Atmospheric Research (NCAR).

The synoptic scale meteorology datasets currently available are

- Six-hourly synoptic scale analyses on a longitude/latitude grid at 0.75- or 1.0-degree grid spacing (approximately 75 km or 100 km). The database is derived from LAPS or GASP analysis data from the Australian Bureau of Meteorology, who have kindly allowed us to provide the data used by TAPM. The regions available are shown on the TAPM web site.

Note that user-defined databases of terrain, vegetation, soil, LAI and synoptic analyses can be used by the model, as described in Section 3.1.3.

## 2.3 Some Limitations of the Modelling Approach

- TAPM is suitable for horizontal domain sizes below approximately 1500 km by 1500 km. It should not generally be used for larger domains because of the neglect in the model of the curvature of the earth.
- TAPM cannot be used to accurately represent deep atmospheric circulations or extreme weather events, due to the above reasons, the assumption of incompressibility in the model, and the fact that non-hydrostatic effects are not represented above 5000 m. The winds, temperature and humidity are increasingly smoothed from this level up to the model top at 8000 m, in order to minimise reflections of waves from the model top back into the lower part of the model.
- TAPM cannot be used for very steep terrain because of the use of a terrain following coordinate system in the model. This approach cannot represent discontinuities in terrain height (for example, cliffs or bluff bodies).
- TAPM assumes that cloud processes are resolved by the typical inner grid spacings used in the model (i.e. 3 km or less). Therefore no large-scale cloud convection parameterisation is included.
- The GRS photochemistry option in the model may not be suitable for examining small perturbations in emissions inventories, particularly in VOC emissions, due to the highly lumped approach taken for VOCs in this mechanism. VOC reactivities should also be chosen carefully for each region of application (see the Technical Paper by Hurley, 2008).

## 3 TAPM\_GUI

TAPM\_GUI is a graphical user interface that allows TAPM to be configured for a particular application (see Section 2.1 for installation information). The main window of the interface shown in Figure 1, and the pull-down menus shown in Figure 2, allow the user to select model inputs, including those from various databases (see Section 2.2), and then run the model. After the model has run, the user can process the data in various ways through the interface and analyse the results. The selections made in TAPM\_GUI can be saved in a default file (\*.def) to allow the same settings for a particular model run to be re-loaded at some later time. The **File – Open/Save GUI Default File** menu items are available on the main window menu selection bar. The **File – User-Defined Databases** menu item allows user-defined databases to be accessed, as described in Section 3.1.3. The **File – Exit** menu item allows the user to exit the GUI.

### 3.1 Selecting Inputs, Accessing Databases, and Running the Model

The main inputs can be selected through the controls on the Main Window shown in Figure 1. Below we describe the various sections of this Window.

The **DataBase Directory** section specifies where the database input files (terrain, meteorology, etc) are stored. The appropriate directory needs to be selected before extracting database information.

The **Run File Name Prefix** section specifies the file name prefix used for the outer grid that is used for various input and output files. For example, if the run file name prefix is set to t300a, then the model run files will be named t300a.bat, t300a.inp, t300a.lis, t300a.top, t300a.syn, t300a.syg, t300a.pse, etc. See Section 4 for a description of file name types used by the model.

The **Grid Centre Coordinates** section requires selection of a latitude and longitude coordinate corresponding to the centre of the grids that are set up in the **Grid Parameters** section. This position is used in the database retrieval process to locate the correct position for extraction of

input information. A local coordinate system can also be set up; the default system has the origin at the centre latitude and longitude. The local system uses units of metres in the usual (x, y) Cartesian system where the x is positive from west to east and y is positive from south to north, and specifies the centre of the local system with respect to the latitude/longitude grid centre. This local coordinate system is used both in locating pollution sources (see Section 3.1.2), and in the Analyse Output option (Section 3.2) to map selected grid points for output to the local coordinate system.

The **Date Parameters** section sets the start and end dates for the simulation in the form yyyymmdd (e.g. 19970608 corresponds to the 8 June 1997). The value of the Local Solar Time (LST) relative to Greenwich Mean Time (GMT) is also displayed for information (calculated from the selected grid centre longitude). LST is not affected by daylight saving and approximately corresponds to the regional standard time. For example, Eastern Standard Time on the east coast of Australia is  $EST = GMT + 10$  and Western Standard Time in Western Australia is  $WST = GMT + 8$ .

**TAPM Graphical User Interface (F1:Help)**

File Optional Input Analyse Output Utilities Help

**DataBase Directory** C:\ TAPMDATA\ SURFACE\_INFO

**Run Directory** C:\test

**Run File Name Prefix** t300a

**Grid Centre Coordinates**  
Latitude and longitude (clat, clong) :  
clat=-37deg-49min  
clon=144deg58min  
Local values (m) (cx,cy) :  
cx=0 m  
cy=0 m

**Date Parameters**  
Start Date=20000101  
End Date=20000101  
Local Solar Time = GMT+9.7

**Grid Parameters**  
Number of grid points (nx,ny) :  
nx=25  
ny=25  
Outer grid spacing (m) (dx1,dy1) :  
dx1=30000 m  
dy1=30000 m  
Number of vertical grid levels :  
nz=25  
Levels (m): 10, 25, 50, 100, 150, 200, 250, 300, 400, 500, 600, 750, 1000, 1250, 1500, 1750, 2000, 2500, 3000, 3500, 4000, 5000, 6000, 7000, 8000

New Name:

Make New Name for Run Directory

Get Surface Information from DataBase

Get Surface Information from Previously Saved Files (\*.top)

View/Edit Surface Information

Save Run Files (\*.bat, \*.inp) and Surface Files (\*.top)

Get Synoptic Analyses from DataBase and Save to Files (\*.syn, \*.syg)

Run TAPM from Information in Saved Files

Figure 1. Main Window.

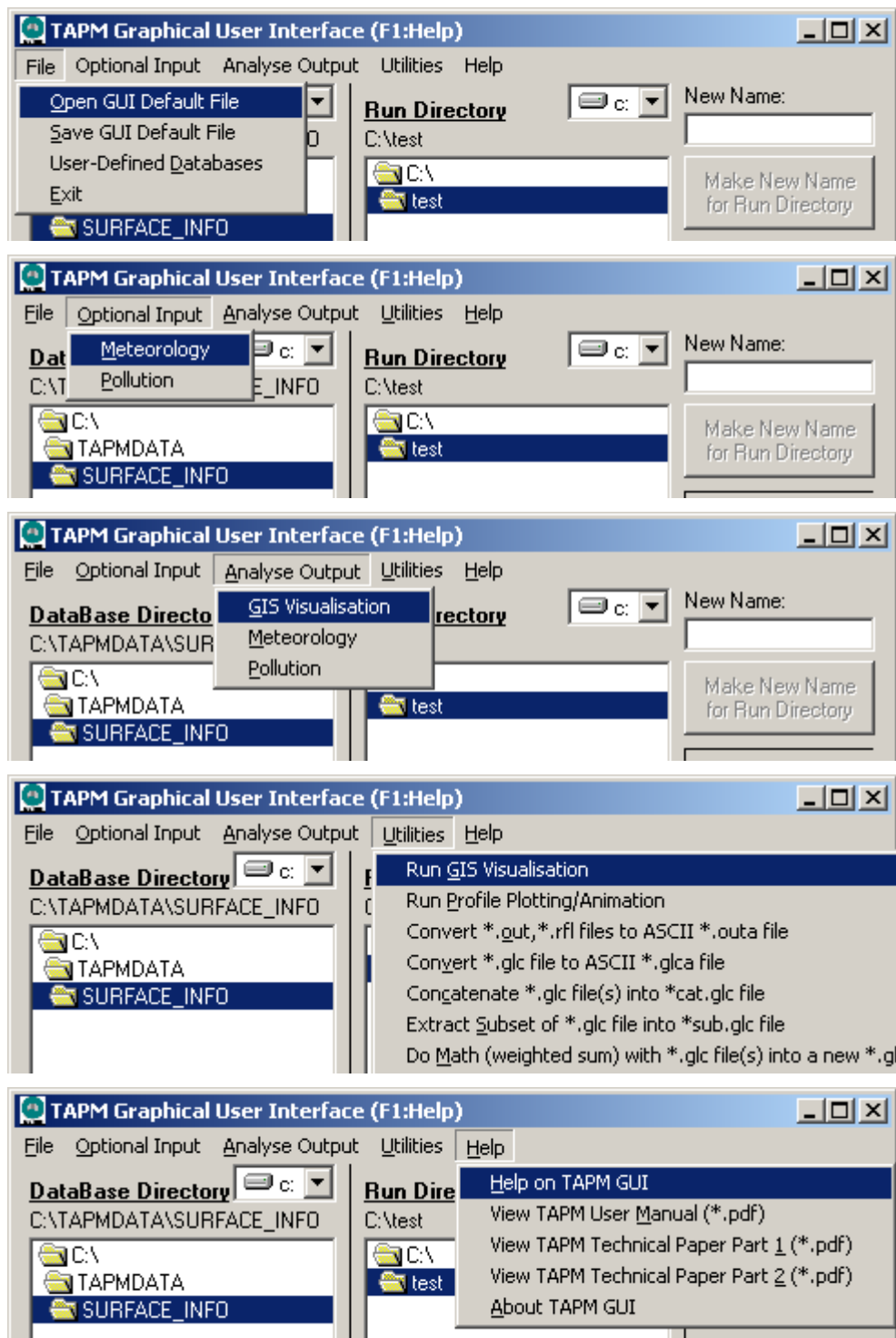


Figure 2. Top-sections of the Main Window showing the pull-down menus.

The **Run Directory** section specifies where to store the input files set up by TAPM\_GUI operations and the output files from the TAPM run. A new run directory may be created using the text-box and button provided.

The **Grid Parameters** section specifies the number of west-east (x) and south-north (y) grid points, the outer grid spacing (m) in these directions, and the number of pre-set staggered vertical grid points. The same number of grid points and the same vertical model levels are used for each grid nest. Generally, any outer grid spacing or number of points can be chosen, as long as the outer grid domain is typically somewhere between 400 km by 400 km and 1000 km by

1000 km, in order to remove the boundary regions as far away as possible from the central region of interest. It is also recommended that a minimum number of grid points for a realistic simulation should be  $20 \times 20 \times 20$  points in the x, y, z directions respectively, although a grid of  $25 \times 25 \times 25$  points or more is preferred. Note that the disk storage needed for the output files can be large, depending on the number of grid points and the start and end dates selected. Under some versions of the Windows operating system, these parameters need to be selected so that file sizes do not exceed the system limit of 2GB per file – this can be estimated by doing a 1-day test simulation for the preferred grid configuration to obtain an idea of the file storage needed per simulation day, and if the projected sizes are too large, then either decreasing the number of grid points or splitting the run into several runs for different date configurations.

The buttons on the right of the main window shown in Figure 1 are used once the model simulation has been configured. They extract surface information and synoptic analyses from the databases, save model input files and allow the model to be run. The **Get Surface Information from Database** button extracts terrain height, vegetation type and soil type from files contained in the currently selected database directory. Alternatively, this information may be recalled using the **Get Surface Information from Previously Saved Files (\*.top)** button if files (\*.top and \*.inp) exist in the current Run Directory with the Run File Name Prefix that matches the current GUI selections. Once this information has been obtained, it can be viewed and edited in the **Surface Window** (see below) by pressing the **View/Edit Surface Information** button. The **Save Run Files (\*.bat, \*.inp) and Surface Files (\*.top)** button saves these files in the Run File Directory using the Run File Name Prefixes for each grid. For example, if there are three grids selected (see Section 3.1.1) with file name prefixes for the outer to inner grids of t300a, t100a and t30a respectively, then the files t300a.bat, t300a.inp, t300a.top, t100a.top and t30a.top will be saved. The **Get Synoptic Analyses from Database and Save to Files (\*.syn, \*.syg)** button accesses synoptic meteorological and sea-surface temperature analyses from the currently selected Database Directory and outputs this information to files using the Run File Name Prefix (e.g. t300a.syn and t300a.syg). Once the **Save Run Files (\*.bat, \*.inp) and Surface Files (\*.top)** button and the **Get Synoptic Analyses from Database and Save to Files (\*.syn, \*.syg)** button have been pressed, then the model can be run using the saved files by pressing the **Run TAPM from Information in Saved Files** button, or by running the batch file from outside of the GUI and saving the default file from within the GUI. When the **Run TAPM from Information in Saved Files** button is pressed, the user is also prompted to save the GUI Default File (\*.def). Note that optional input, which includes nested domains and pollution calculations, should be set up before saving files and running the model (see Sections 3.1.1 and 3.1.2).

The **Surface Window** shown in Figure 3 (viewed by pressing the **View/Edit Surface Information** button), allows the user to view and optionally edit the terrain height, vegetation type, soil type and monthly Leaf Area Index (LAI). This information is stored in the (\*.top) files for each grid when the **Save Run Files (\*.bat, \*.inp) and Surface Files (\*.top)** button is pressed. The grid domain (e.g. t300a, t100a, t30a) and surface type can be selected and viewed, and the information at any grid point in the domain can be selected by using the left mouse button in the picture region. If edit mode is turned on, then the Grid Value can be modified using the slider control. A range of grid points can be selected and changed by holding down the left mouse button, dragging out a rectangular region, and then changing the slider control. Any changes to the gridded information will be saved in the \*.top files when the **Save Run Files (\*.bat, \*.inp) and Surface Files (\*.top)** button on the **Main Window** is pressed, but changes made on one grid nest will not affect the other grid nests. The Show Grid Lines check box controls whether grid lines are overlayed on the picture. The Show Network Sites and Show Site Names check boxes control whether site positions and labels are shown in the picture respectively, while the Edit Network Sites button allows the user to update the network.



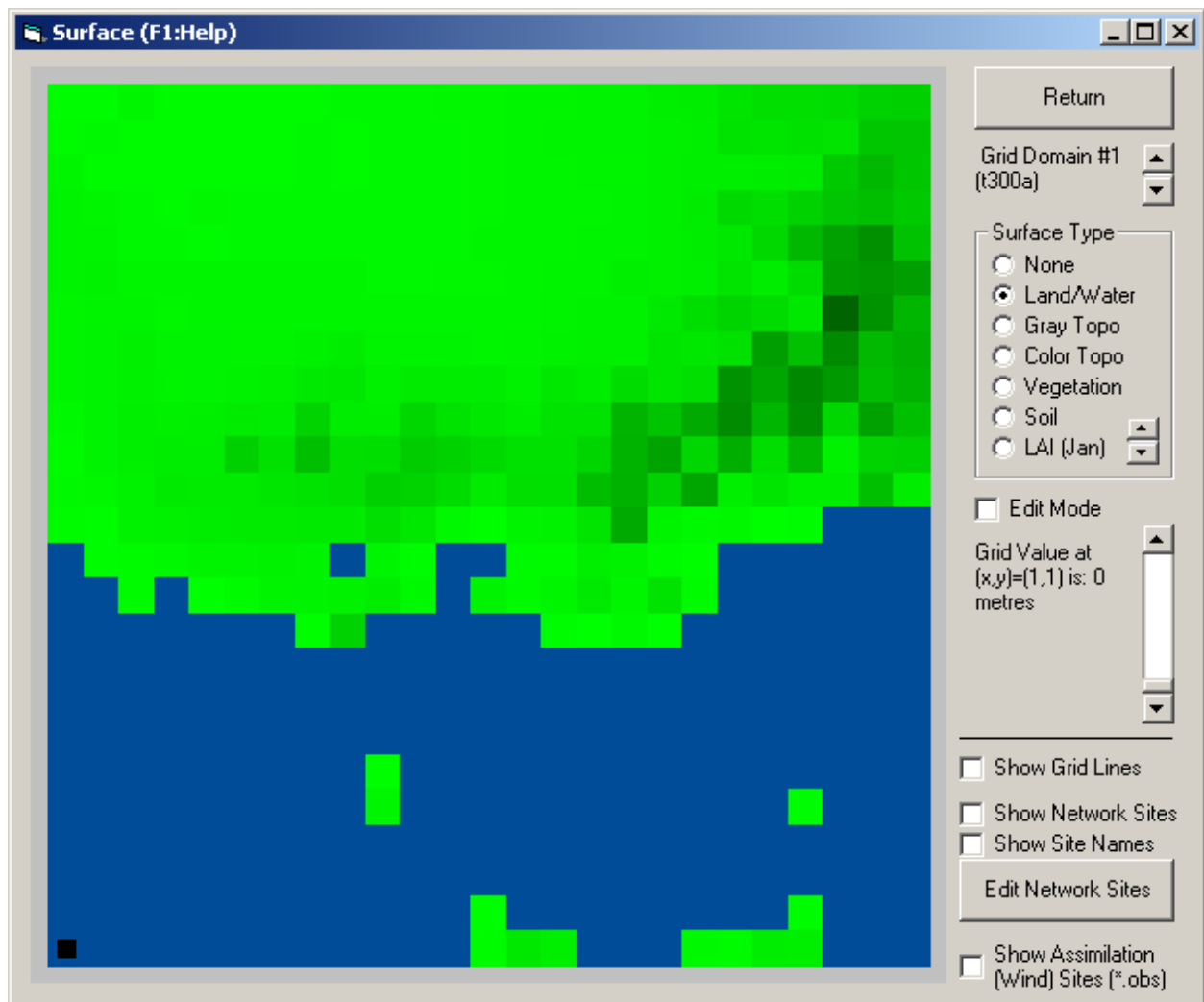


Figure 3. View/Edit Surface Information Window.

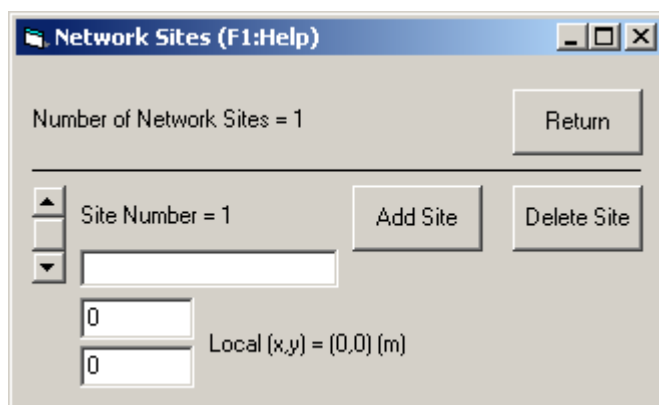


Figure 4. Network Sites Window.

Figure 4 shows the **Network Sites Window**, which allows a set of site positions and descriptions to be input and used as overlays in pictures of grid characteristics in various parts of TAPM\_GUI. The sites describe where monitoring sites, towns, or local points of interest are located on each of the grids. This information is useful when setting up grid characteristics or processing model outputs, but is not used by the model directly. The number of sites is displayed at the top of the window. A particular site can be selected using the slider control on the left of

the window, and a text description can be entered in the text box next to the slider. Sites can be added or deleted using the Add Site and Delete Sites buttons respectively. The horizontal site (x,y) coordinates in local units (m) can be selected using the slider controls provided, using the same coordinate system as for the **Grid Centre Coordinates** (local values) on the **Main Window** shown in Figure 1. The network site information is stored in the GUI Default File.

### 3.1.1 Optional Inputs – Meteorology

Figure 5 shows the **Optional Inputs – Meteorology Window**, which can be selected from the main window menu bar at the top of Figure 1. This window consists of two sections.

The **Grid Options** section controls the grid nesting options for a nested simulation and specifies the number of model levels to be stored in the output file. The number of nested grid domains can be selected, and for each nest, the file name prefix and x, y grid spacings (m) should be chosen. It is recommended that the ratio of grid spacings from one nest to another be in the range 2 to 4, as this has been found to optimise both model run time and numerical noise generated in the nesting regions. For example, the default grid spacings of 30000, 10000, 3000, 1000 m have nesting ratios of 3.0, 3.33 and 3.0. The maximum number of grid domains is five. If a smaller number is selected, the grid spacings set for the unused grids are ignored by the model. An option is available to not prefix the Run File Directory to the Run File Names when they are stored in the input file (\*.inp). The number of model levels to be stored in the meteorological output file (\*.out) is specified with reference to nz, the number of vertical grid levels in the model. If predictions from only the first few model levels will be analysed, the size of the output file can be decreased by reducing the number of levels stored. The meteorological (and pollution) output can also skip up to the first 10 days of the simulation, which, for example, is useful if one or more model spin-up days are used (this is strongly recommended for case studies of only a few days, but not necessary for annual runs) and the output is not needed/desired. An option to output meteorological fields into \*.m3d files is available, and once saved, these files can be used in new runs (with the same meteorological grid characteristics) to do pollution runs without re-running the meteorology. File name prefixes for the \*.m3d files can be selected in the **Options to Bypass Meteorology Calculations** Section of the Window. Meteorology in the \*.m3d files at each hour (not hourly-averaged) are interpolated linearly in time for use in pollution calculations at each model time step. When running with \*.m3d files, a pollution run can be nested, non-nested (i.e. using only the inner-most grid), non-nested with a non-centred pollution grid, or non-nested and using only those sources specified to use LPM mode (no EGM mode, and so only LPM point sources, without chemistry or deposition). This set of options can be considered for use when a large number of pollution runs are needed for the same meteorology.

The **Advanced/Experimental Options** section controls some extra model features, and should generally not be changed. The first one is the model advection and gravity wave timestep scaling factor, which is set by default to 1, and which should only be changed (decreased) if numerical instability occurs for a particular simulation. Increasing this value will slow the model down, and so other changes to the model configuration should be tried first in the case of numerical instability (such as shifting grid centre or boundaries). The next option controls the way synoptic analyses are used by the model (through \*.syn and \*.syg files), with the recommended option to vary synoptic conditions in three-dimensional space and time, and to feed the synoptic fields into the model at the boundaries of the outer-most grid. Three other simpler options are available

- synoptic winds, temperature and humidity vary with height,
- synoptic winds, temperature and humidity vary with height and time,
- synoptic winds, temperature and humidity vary with height and time, and synoptic winds also vary with horizontal position,

all of which use zero gradient boundary conditions on the outer-most grid. Note that when horizontal variations of synoptic meteorology for some variables are not used in the simpler options, then values of these variables are taken at the central point of the model grid. Note also that the scaled pressure gradient option will only have an effect when the simpler synoptic options are used.

The screenshot shows a software window titled "Meteorology (F1:Help)". It is divided into several sections:

- Grid Options:**
  - Number of Grid Domains = 3 (with a "Return" button next to it).
  - Run File Name Prefixes (Grids 2-5):
    - Grid 2: t100a, dx2=10000 m, dy2=10000 m
    - Grid 3: t030a, dx3=3000 m, dy3=3000 m
    - Grid 4: t010a, dx4=1000 m, dy4=1000 m
    - Grid 5: t003a, dx5=300 m, dy5=300 m
  - ☐ Store full pathname of Run File Name in \*.inp file
  - Highest model level stored in output files (\*.out) = nz-10
  - ☐ Output results for all days
  - Meteorology output into \*.m3d files: None
- Options to Bypass Meteorology Calculations:**
  - Meteorology input from \*.m3d files: None
  - Files for Grid #1: t300ayyyyymmdd.m3d
  - Files for Grid #2: t100ayyyyymmdd.m3d
  - Files for Grid #3: t030ayyyyymmdd.m3d
  - Files for Grid #4: t010ayyyyymmdd.m3d
  - Files for Grid #5: t003ayyyyymmdd.m3d
  - Select \*.m3d input file names (above)
- Advanced/Experimental Options:**
  - ☐ Model advection and gravity-wave time-step Scaling Factor (<1 allows smaller timestep) = 1
  - ☐ Synoptic conditions vary with 3-d space and time. Boundary conditions on outer-grid are from Synoptic Analyses (Recommended)
  - ☐ V4 Land Surface Scheme (Recommended)
  - ☐ TKE-EPS Turbulence (Prognostic TKE and Eddy Dissipation Rate, plus EDMF Scheme) (Recommended)
  - ☐ Include Rain (Recommended)
  - ☐ Non-Hydrostatic Pressure (Research Option)
  - Specify Non-Default SST and Initial Deep Soil Parameters

Figure 5. Optional Inputs – Meteorology Window.

The next option controls the choice of land surface scheme with the default being to use the V4 land surface scheme. The next option controls the choice of turbulence scheme with the default being the TKE-EPS-EDMF scheme introduced in V4. The rain and snow options can be used when these processes are important. The default is to have rain switched on and snow switched off, as rain affects the soil moisture content and evaporative fluxes, while snow is only important in a very limited number of situations/locations. Currently snow cover is unaccounted for in the land surface scheme. Theoretically, the non-hydrostatic option potentially only needs to be turned on when the grid spacing is less than about 1000 m and then only if the terrain is steep and the winds are strong, otherwise this option will have little effect other than to increase the run time. However, in practice for local scale environmental meteorology and air pollution work, the hydrostatic option gives good results, and so is the default. Note that the non-hydrostatic option is currently not as robust as the hydrostatic default, and can cause numerical instability in some cases.

The next control is a command button that gets sea surface temperature (SST) from the database and allows it and deep soil parameters to be changed in the **Extra Surface Parameters Window**.

The **Extra Surface Parameters Window** shown in Figure 6, allows the user to view and optionally modify sea-surface temperature and deep soil parameters. By default, the monthly varying deep soil volumetric moisture content in units of  $\text{m}^3 \text{m}^{-3}$  (i.e. volume of water per volume of soil) is set to a value of 0.15. When using the default V4 land surface scheme, this value will only be used to initialise the soil moisture content, and so only potentially needs to be changed when modelling case studies of a few days duration, as the dynamic model solution for all soil levels will then adjust the values as the model runs.

When using the old land surface scheme, the default value of 0.15 is a reasonable value to use for most times of the year in regions dominated by sandy clay loam soil (wilting value of 0.175 and saturation value of 0.420). Generally, for sandy soils and dry months a lower value should be used (e.g. 0.05–0.10), while for clay soils and wet months a higher value is appropriate (e.g. 0.20–0.35). The monthly variations in this parameter should usually be chosen to reflect the monthly variations in evaporation and rainfall in a particular location, if this data is available.

The deep soil temperature and sea-surface temperature can also be offset from the values derived from the SST database, although generally this is not necessary.

Deep Soil Volumetric Moisture Content:	Sea Surface & Deep Soil Temperatures:
0.15 (Jan)	290.6 & 290.6 (Jan)
0.15 (Feb)	290.9 & 290.9 (Feb)
0.15 (Mar)	290.7 & 290.7 (Mar)
0.15 (Apr)	290 & 290 (Apr)
0.15 (May)	288.5 & 288.5 (May)
0.15 (Jun)	287.4 & 287.4 (Jun)
0.15 (Jul)	286.7 & 286.7 (Jul)
0.15 (Aug)	286 & 286 (Aug)
0.15 (Sep)	286.4 & 286.4 (Sep)
0.15 (Oct)	287.1 & 287.1 (Oct)
0.15 (Nov)	288 & 288 (Nov)
0.15 (Dec)	289.4 & 289.4 (Dec)

Return

Figure 6. Extra Surface Parameters Window.

### 3.1.2 Optional Inputs – Pollution

Figure 7 shows the **Optional Inputs – Pollution Window**, which can be selected from the **Main Window** menu bar at the top of Figure 1.

The top control on the left of the window controls which (if any) pollutants will be simulated by the model. The options are no pollution calculations (None), one tracer mode (TR1), two tracer mode (TR1, TR2), four tracer mode (TR1, TR2, TR3, TR4), a chemistry mode without sulfur and fine particle chemistry (APM, NO<sub>x</sub>, NO<sub>2</sub>, O<sub>3</sub>), a chemistry mode with sulfur and fine particle chemistry (APM, NO<sub>x</sub>, NO<sub>2</sub>, O<sub>3</sub>, SO<sub>2</sub>, FPM), and a dust mode with four particle sizes for PM<sub>2.5</sub>, PM<sub>10</sub>, PM<sub>20</sub> and PM<sub>30</sub> (denoted as TR1, TR2, TR3 and TR4 respectively in the model) with aerodynamic diameter less than 2.5, 10, 20 and 30 microns respectively. APM and FPM usually represent particles with aerodynamic diameter less than 10 microns (PM<sub>10</sub>) and 2.5 microns (PM<sub>2.5</sub>) respectively. Emission characteristics for each pollutant are set up though the Emission Files. The tracer modes do not include chemistry or deposition processes and predicted pollutant concentrations are output in units of  $\mu\text{g m}^{-3}$ . Each tracer can represent either specific groups of sources or emissions for the same pollutant, different pollutants, or a combination of both of these. In the chemistry and deposition modes specific pollutants and their interaction with each other are represented. In chemistry and dust mode, PM processes include particle gravitational settling and deposition, but dust mode doesn't include chemistry, although first-order decay can be used.

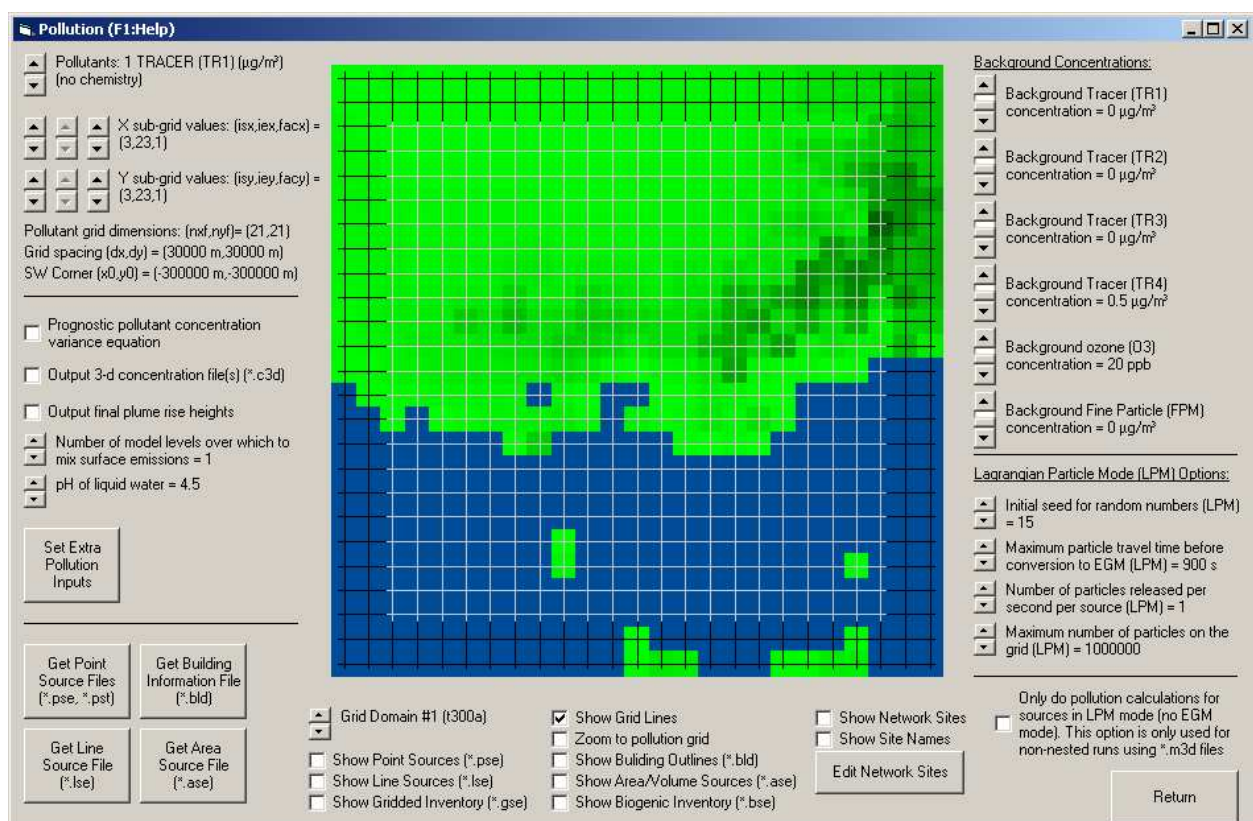


Figure 7. Optional Inputs – Pollution Window.

The next set of controls allows the selection of the pollution grid. The grid may be the same as the meteorology grid – same grid dimensions and grid spacing (the default), or it may be a subset of the meteorology grid with different grid dimensions and/or grid spacing. There is a set of

controls for the x and the y directions, and these allow the user to decrease the pollution grid width (width isx–iex and depth isy–iey in meteorological grid units, centred on the meteorology grid) and the grid spacing (by pre-set factors facx and facy). These changes will be reflected in the picture of the region in the right of the window by changes in the white grid lines that represent the pollution grid. Underneath these grid controls, the number of grid points in the pollution grid is displayed for information. If a large number of grid points is used, this can become the dominant factor controlling the run time. An extra set of sliders is also available to allow non-centred pollution grids when running from \*.m3d saved meteorology for the inner-most grid, and a check-box has been added to allow use of LPM mode sources only (no EGM mode) for this option.

The next options control:

- whether an equation for concentration variance is used for each pollutant. This option must be selected if outputs of maximum (annual) concentration statistics are needed for averaging periods less than one hour. This option will approximately double the computational time for pollution calculations in tracer mode.
- whether to output three-dimensional concentration into \*.c3d files that will automatically be processed (if they exist) when the \*.glcr files are processed.
- whether to output final plume rise heights into a \*.plr file for those point sources with non-zero plume rise.
- the number of model levels over which gridded surface emissions are mixed (1 or 2 levels for \*.gse, \*.bse, \*.whe, \*.vpx, \*.vdx, \*.vlx and \*.vpv files).
- the pH value used in the aqueous chemistry and wet deposition calculations.

The Set Extra Pollutant Inputs command button pops-up a Window (Figure 8) that allows the selection of the pollutant species (SO<sub>2</sub>, HF, VOC, NO<sub>x</sub>, CO or CO<sub>2</sub>) to be assigned to Tracers TR1-TR4, and/or a first-order decay rate, in tracer mode. This option allows a species selection that has associated with it various characteristics (currently deposition or variation with temperature for vehicle emission files). In chemistry mode, temperature correction for particular emission types and species is automatically determined.

The top-right of the Window has a group of sliders that control background pollution concentrations. The background concentrations are used to initialise pollutant concentrations and are also used as inflow boundary conditions on the outer grid. The slider labels for the first four background concentrations change depending on the selected pollutant mode (tracer or chemistry), as do the concentration units ( $\mu\text{g m}^{-3}$  or ppb).

Underneath the background concentration controls, the next group of four controls is only relevant if one or more point sources is selected to be represented by a near-source Lagrangian approach (LPM mode). This mode for individual sources can be selected in the point source emission file described later, and is only used on the inner-most grid. As this option is computationally intensive, it should be used selectively. The first control allows selection of the initial seed for the random number generator. Each different seed will produce a different set of random numbers that is used by the simulation. The next control allows selection of the travel time after which Lagrangian particles are converted to grid concentration and from then on represented by the Eulerian transport equation (EGM mode). The default of 900 seconds is long enough to allow the maximum ground level concentration from elevated point sources to be represented by the LPM, while keeping the run time to a minimum. The next control specifies the number of particles released per second per source for sources in LPM mode. The default of one is large enough to restrict the statistical sampling error in LPM mode to be about  $\pm 10\%$  for hourly average concentration; larger values will linearly increase the run time, while increasing the concentration accuracy as the square root of the number of particles. The last control in this group specifies the maximum number of particles that may be on the grid at any one time. If this number is exceeded, the simulation will stop and print out (in the \*.lis file) that the maximum

number of particles has been exceeded. This number must then be increased and the simulation repeated.

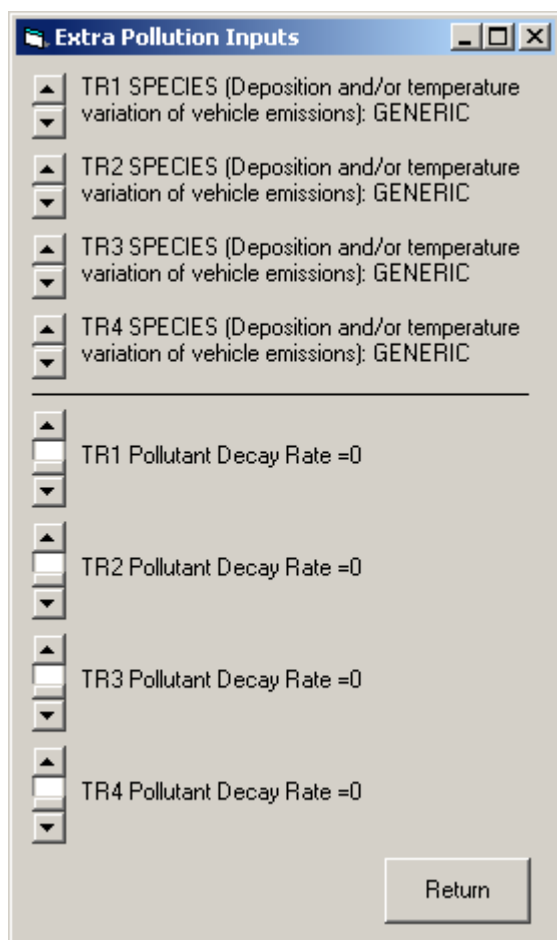


Figure 8. Extra Pollution Inputs Window.

Beneath the picture shown in Figure 7, are various sliders and check boxes that allow the user to control aspects of the picture display, including which grid domain is shown, display of grid lines, display of emission source positions, building positions, emission grids, and display of network sites. The network site information can also be edited through the **Edit Network Sites** command button described previously.

In Figure 7, there are also four command buttons for manipulating point (see Figure 9), line or area/volume source emission files, and for input of building characteristics (see Figure 10).

The **Point Source Emissions Window** shown in Figure 9 allows the creation of a point source emissions inventory. The top left-hand side of the window shows the number of sources. Sources can be added or deleted from the inventory using the **Add Source** and **Delete Source** command buttons. A particular source can be selected using the source selection control, and a source text description can be entered. The list of source descriptions is stored in a (\*.pst) file that is only used by the GUI. The user can select whether a particular source in the inventory is turned off, is represented by the EGM, or is represented by the LPM near to the source and the EGM far from the source. Note that the LPM option should be used selectively for the most important sources to be modelled. Although this is theoretically the most accurate approach for predicting near-source maximum ground level concentrations, it is also the slowest option to use and, unlike the EGM, the run time increases with each source using this mode. LPM particle positions are



dumped every 15 minutes for all sources. They consist of the horizontal position of the puff centroid and the vertical position of the particle, and are available only for the lifetime of a particle (i.e. for particle age less than the maximum travel time). They are used by the GIS Visualisation software to complement the concentration data. The gradual plume rise file (\*.plrg) includes hourly plume rise information for sources in LPM mode (see also the optional final plume rise output in the \*.plr file described previously).

The local source location should be entered using the same local coordinate system as specified for the Grid Centre Coordinates on the Main Window. Other non-time varying source information are the stack height (m), the stack radius (m), the buoyancy enhancement factor (used when emissions from adjacent stacks influence each other's plume rise – see Technical Paper of Hurley, 2008), the fraction of NO<sub>x</sub> emitted as NO and the fraction of APM emitted as FPM.

Figure 9. Point Source Emissions Window.

On the right-hand side of the window, time varying emissions can be entered. The top slider controls the number of hours of emission information. The default is that emissions are constant in time, but the slider can be moved to allow time varying emissions. For example, if the slider is set at 24, then emissions vary over a 24-hour period and then the same emissions are used again by the model for every 24-hour period during the model run (i.e. emissions cycle daily). For each hour, emission characteristics need to be input using the controls provided. The variables include stack exit velocity ( $\text{m s}^{-1}$ ), stack exit temperature (K), and up to four stack emission rates ( $\text{g s}^{-1}$ ). The pollutant emissions needed depend on which pollution mode is being used, as specified in the **Optional Inputs – Pollution Window** (Figure 7). If any of the three tracer modes was selected, the emission rates need to be input for those source or pollutant groups that correspond to the appropriate variables TR1, TR2, TR3 and TR4 shown in the control labels (i.e. if in 1-tracer mode, then only TR1 needs to be specified, if in 4-tracer mode, then TR1–TR4 need to



be specified). If one of the two chemistry modes was selected, then the corresponding pollutants to those used in the selected mode need to be specified (i.e. APM, NO<sub>x</sub>, SO<sub>2</sub> and Rsmog), as indicated in the control labels. If dust mode is used, TR1–4 values need to be specified for the PM variables.

The **Line or Area Source Emissions Window** (not shown here, as it is similar to the Point Source Window) allows the creation of a line or area/volume source emissions inventory. The top left-hand side of the window shows the number of sources. Sources can be added or deleted from the inventory using the **Add Source** and **Delete Source** command buttons. A particular source can be selected using the source selection control. The user can select whether a particular source in the inventory is turned off, or is represented by the EGM mode.

The local source locations and heights should be entered using the same local coordinate system as specified for the Grid Centre Coordinates on the Main Window. Other non-time varying source information is the fraction of NO<sub>x</sub> emitted as NO and the fraction of APM emitted as FPM.

On the right-hand side of the window, time varying emissions can be entered. The top slider controls the number of hours of emission information. The default is that emissions are constant in time, but the slider can be moved to allow time varying emissions. For example, if the slider is set at 24, then emissions vary over a 24-hour period and then the same emissions are used again by the model for every 24-hour period during the model run (i.e. emissions cycle daily). For each hour, emission characteristics need to be input using the controls provided. The variables include up to four stack emission rates ( $\text{g s}^{-1}$ ). The pollutant emissions needed depend on what pollution mode is being used. If any of the three tracer modes was selected, the emission rates need to be input for those source or pollutant groups that correspond to the appropriate variables TR1, TR2, TR3 and TR4 shown in the slider labels (i.e. if in 1-tracer mode, then only TR1 needs to be specified, if in 4-tracer mode, then TR1-TR4 need to be specified). If one of the two chemistry modes was selected, then the corresponding pollutants to those used in the selected mode need to be specified (i.e. APM, NO<sub>x</sub>, SO<sub>2</sub> and Rsmog), as indicated in the control labels. If dust mode is used, TR1–4 values need to be specified for the PM variables.

The screenshot shows a software window titled "Buildings (F1:Help)". It contains two main sections for defining source locations. The first section, "Number of Buildings = 1", includes a "Building Number = 1" label, a "Height = 0 (m)" input field, and "Add Building" and "Delete Building" buttons. The second section, "Number of Corners = 1", includes a "Corner Number = 1" label, a "Local (x,y) = (0,0) (m)" label, and two input fields for the x and y coordinates, both currently set to 0. It also has "Add Corner" and "Delete Corner" buttons. A "Save/Return" button is located at the bottom right of the window.

Figure 10. Buildings Window.

### 3.1.3 File – User-Defined Databases

Figure 11 shows the **File – User-Defined Databases Window**, which can be selected from the **Main Window** menu bar at the top of Figure 1. In this window, user-defined databases of surface information and synoptic analyses can be specified for use by TAPM\_GUI.

User-defined databases of terrain height, vegetation type, soil type and monthly LAI can optionally be included by specifying up to four extra files for each variable. These files are read for each variable in the order specified in the Window (top to bottom), and information read from each file in turn, replaces information already on the model grid. The data must be on a latitude/longitude grid with constant and equal grid spacing in each direction. Linear interpolation in space is used for all variables to go from the database grid to the model grids. The file formats for these files are as follows (free format)

*READ: nlon, nlat, blon, blat, dl*

*READ: ((data(i, j), i=1,nlon), j=1,nlat)*

with variables

*nlon*        number of grid points in the longitudinal direction (west-east),  
*nlat*        number of grid points in the latitudinal direction (south-north),  
*blon*        longitude of the south-west corner of the grid (values within range: –180 to 180 degrees),  
*blat*        latitude of the south-west corner of the grid (values within range: –80 to 80 degrees),  
*dl*         grid spacing (same in both directions) (degrees),  
*data*        data grid - either terrain height above mean sea level (m), vegetation type (–1 to 38), soil type (0 to 9) or LAI (0-10) (for categories, see Technical Paper by Hurley, 2008),  
              where  
              data(1, 1) corresponds to the south-west corner,  
              data(nlon, 1) corresponds to the south-east corner,  
              data(nlon, nlat) corresponds to the north-east corner,  
              data(1, nlat) corresponds to the north-west corner.

Note that for LAI datasets the second *READ* line above needs to be repeated another 11 times in order to have a total of 12 months of LAI represented (Jan-Dec).

User-defined databases of synoptic analyses can also be included as an alternative to the default datasets. The data must be on a latitude/longitude grid with constant and equal grid spacing in each direction. Linear interpolation in space and time is used for all variables to go from the database grid to the model grids. This information can be made available to TAPM\_GUI by supplying a grid file (gridN.EXT, with *N* a single digit integer (2–9), and EXT a three letter code (e.g. AUS)) with file format as follows (free format)

*READ: nlon, nlat, nlev*

*READ: (lon(i), i=1,nlon)*

*READ: (lat(j), j=1,nlat)*

*READ: (p\_lev(j), j=1,nlev)*

with variables

*nlon*        number of grid points in the longitudinal direction (west-east),  
*nlat*        number of grid points in the latitudinal direction (south-north),  
*nlev*        number of grid points in the vertical direction,  
*lon*         grid longitudes from west to east (values within range: –180 to 180 degrees),  
*lat*         grid latitude from south to north (values within range: –80 to 80 degrees),  
*p\_lev*       pressure level of the synoptic analyses vertical coordinate system (either pressure (Pa) or scaled pressure (pressure/surface pressure)),

and by supplying associated synoptic analyses files (SYNyyyymmdd.EXT) with file format as follows (free format)

*Repeated for each available time during the day (preferably four times)*

*READ: Date*

*READ: Hour*

*READ: ((Psurf(i, j), i=1,nlon), j=1,nlat)*

*READ: (((Z(i, j, k), i=1,nlon), j=1,nlat), k=1,nlev)*

*READ: (((U(i, j, k), i=1,nlon), j=1,nlat), k=1,nlev)*

*READ: (((V(i, j, k), i=1,nlon), j=1,nlat), k=1,nlev)*

*READ: (((T(i, j, k), i=1,nlon), j=1,nlat), k=1,nlev)*

*READ: (((Q(i, j, k), i=1,nlon), j=1,nlat), k=1,nlev)*

with variables

*Date* GMT date (yyyymmdd) (e.g. 20010831 is 31 August 2001),

*Hour* GMT hour (hhhh) (e.g. 2100 is 9 pm),

*Psurf* Surface Pressure (Pa),

*Z* Height above sea level (m),

*U* West-east (x) component of the wind ( $\text{m s}^{-1}$ ),

*V* South-north (y) component of the wind ( $\text{m s}^{-1}$ ),

*T* Temperature (K),

*Q* Specific humidity of water vapour ( $\text{kg kg}^{-1}$ ).

These free format ASCII files of synoptic analyses then need to be processed (using the command button) into a BINARY format file (yyyymmdd.EXT) that can be read by TAPM\_GUI.

**User-Defined Databases (F1:Help)**

**Topography:**

**Vegetation (Land-Use Type):**

**Soil Type:**

**Vegetation (Leaf Area Index):**

**Synoptic Analyses:**

Database Type

☒ Default

☐ User-Defined

Convert ASCII Format Synoptic Analyses to Binary Format

Current Database (automatic selection)

Return

Figure 11. User-Defined Databases Window.

### 3.2 Analysing Outputs

Three menu options for analysing outputs can be selected from the **Main Window** menu bar at the top of Figure 1. Output files that can be processed are described in Section 4. Note that all

model output is hourly averaged and specified at the end hour (i.e. an hourly average at hour 2 is the average of values between hours 1 and 2).

### 3.2.1 GIS Visualisation

Figure 12 shows the **Analyse Outputs – GIS Visualisation Window**, which allows visualisation of two-dimensional fields of meteorology and pollution using the Graphical Information System (GIS) provided with the TAPM software. Note that the GIS software needs to be installed before this option can be used.

At the top of the window there is a slider control that allows a particular grid to be chosen. The next slider controls how many meteorological levels will be processed for potential viewing by the GIS. Model levels can then be selected with the series of sliders down the left side of the window for the number of levels chosen. Each level selected allows extraction of meteorological information in an x-y plane (plan view) for variables at that model level. For example, if level 1 (klev1 = 1) is chosen, the first model level (approximately 10 m above the ground) will be used. Optionally associated with each level is an x-z or y-z plane (vertical cross-section), which is extracted and stored in the file with the model level information. The vertical cross-section information is along a particular i or j grid line, where i is the grid unit value in the west-east (x) direction (range 1 to nx), and j is the grid unit value in the south-north (y) direction (range 1 to ny). For example, if x-z and cross1 = 20 are chosen, then an x-z cross-section is extracted along the grid line j = 20. If cross1 = 0 is chosen, then no cross-section information is extracted. The file name used for the meteorological information uses the Run File Name Prefix for the particular grid chosen, and appends the level number and a file name extension corresponding to a particular variable. For example, the processed file for the above selections would be t100a1.wnd for winds ( $\text{m s}^{-1}$ ). Other three-dimensional meteorological variables can be viewed in the GIS as scalars. For example

- potential temperature (K) t100a1.pt,
- temperature (K) t100a1.tt,
- specific humidity of water vapour ( $\text{kg kg}^{-1}$ ) t100a1.qv,
- specific humidity of cloud water ( $\text{kg kg}^{-1}$ ) t100a1.qc,
- turbulent kinetic energy ( $\text{m}^2 \text{s}^{-2}$ ) t100a.tke.

If at least one level of information is selected with the slider near the top of the window, then some two-dimensional variables are also output (with a zero level value in the file name) and can be loaded into the GIS as scalars. For example:

- surface net radiation ( $\text{W m}^{-2}$ ) t100a0.nfx,
- surface sensible heat flux ( $\text{W m}^{-2}$ ) t100a0.hfx,
- surface evaporative heat flux ( $\text{W m}^{-2}$ ) t100a0.efx,
- surface temperature (K) t100a0.ts,
- mixing height (m) t100a0.zi,
- convective velocity scale ( $\text{m s}^{-1}$ ) t100a0.wst.

All available pollution concentration output files (\*.glcr and \*.c3d) are processed for use by the GIS, using the selected averaging period, including optional running averages, with averages specified at the end hour (i.e. a 4-hour running average for data at hours 1–4 is denoted by a value at hour 4). If 3-d concentrations are available, then concentrations will be extracted at the same levels as for extraction of the meteorological data. Optionally, the locations (without labels) of the network sites previously entered in the Network Sites Window can be output for use by the GIS when a region is loaded. The name of the directory where the GIS has been installed can also be entered, if it differs from the default installation directory (C:\GIS). A scaling factor can also be chosen if concentrations are expected to be outside the short-integer range (0–32,768) used to store concentrations in the GIS.

Once the desired options for processing TAPM output files for the GIS have been chosen, the user then presses the button to **Process TAPM Output and Run the GIS**. The processing is done through a batch file called tapm2gis.bat with input file tapm2gis.inp. This can take some time to run, depending on the characteristics of the model run.

After the processing has finished, the GIS software runs automatically, and then the user needs to load a Region file from the TAPM Run Directory using the **File – Region** menu item in the GIS. Other files can then be loaded including winds (**File – Winds**), meteorological scalars (**File – Scalars**) and concentrations/LPM-particles (**File – Concentrations**). Visualisation over time can be viewed by pressing the F-key or K-key (forward in time), the B-key or J-key (backward in time), and paused using the space-bar key. A clock window can be displayed using the **View – Clock** menu item. Other menu options can be selected, including **View** and **Options** menus, that allow GIS parameters to be changed or saved/loaded from a parameter options file. See the **Help** menu item in the GIS for more detail.

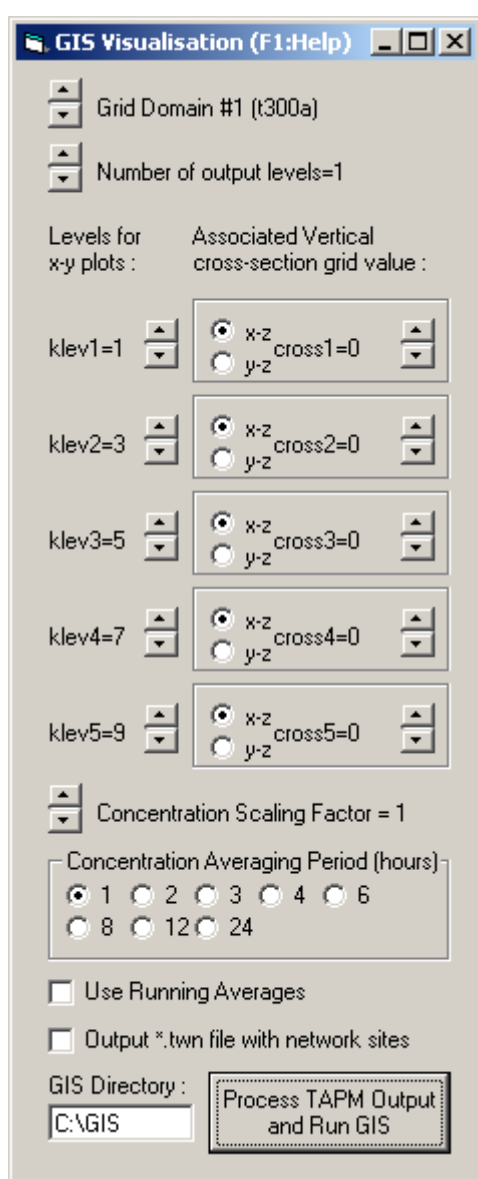


Figure 12. Analyse Output – GIS Visualisation Window.

### 3.2.2 Meteorology

Figure 13 shows the **Analyse Outputs – Meteorology Window**, which allows extraction of time series, profiles and summary statistics of meteorology, independent of the GIS Visualisation analyses.

At the top of the window is a slider control that allows a particular grid to be chosen. Information on the particular grid dimensions and grid spacing are also displayed for information. Below this are three sliders that control an (i, j, k) grid point selection in (x, y, z) coordinates, which is used for the model output extraction process. The horizontal grid point (i, j) can also be selected graphically with the left mouse button in the picture at the right of the window. The local coordinate (m) of the selected horizontal grid point is displayed under these sliders for information. The **Process TAPM Output and View** button at the bottom of the window processes the TAPM meteorological output files and generates various forms of processed output files as described below. The processing is done through a batch file tapm2ts.bat.

Time series of meteorological variables are output in various formats including a comma delimited form (\*.csv), which can be viewed with the default text editor, or with Microsoft Excel, which includes various statistics and plots of the information. The file name uses the Run File Name Prefix for the grid selected (e.g. t100a), then ‘\_m’ for ‘meteorology’, with the (i, j, k) grid coordinate and the file name extension. For example, if the grid point (3, 2, 1) was chosen along with the \*.csv option, the file name would be t100a\_m00300201.csv. The first three columns of information in the file are the

- date,
- hour of the day (e.g. hour 1 is the hourly average from hours 0–1),
- model run time (elapsed hour from the start of the model run).

The next four columns are the

- vector wind speed WSPD ( $\text{m s}^{-1}$ ),
- vector wind direction WDIR ( $^{\circ}$ ),
- temperature TEMP ( $^{\circ}\text{C}$ ),
- relative humidity RHUM (%),

at the model (i, j, k) grid point selected. The next two columns are

- screen level temperature TEMPSCR ( $^{\circ}\text{C}$ ),
- relative humidity RHUMSCR (%),

at the horizontal (i, j) grid point. The remaining columns are surface based variables including the

- total solar radiation TSR ( $\text{W m}^{-2}$ ),
- net radiation NETR ( $\text{W m}^{-2}$ ),
- sensible heat flux SENS ( $\text{W m}^{-2}$ ),
- evaporative heat flux EVAP ( $\text{W m}^{-2}$ ),
- convective velocity scale WSTAR ( $\text{m s}^{-1}$ ),
- mixing height ZMIX (m),
- friction velocity scale USTAR ( $\text{m s}^{-1}$ ),
- Obukhov length scale LSTAR (m),
- rainfall rate RAINR ( $\text{mm hr}^{-1}$ ),

all at the selected horizontal (i, j) grid point. Note that for grid points over water the value of NETR, SENS and EVAP are not used in the model and so are set to zero.

Other forms of time series information can be output (and viewed with the default text editor) as basic forms of meteorology input files used by various regulatory air pollution dispersion models including

- AUSPLUME (\*.apl), containing all of the standard variables needed by the model, as well as the optional standard deviation of horizontal wind direction,
- DISPMOD (\*.dmd), containing all of the standard variables needed by the model,
- ISCST (\*.isc), containing all of the standard variables needed by the model, as well as the optional friction velocity scale and Obukhov length,
- CALMET (\*.geo, \*.sur and \*.up) (the diagnostic wind field component of CALPUFF), containing all of the standard variables needed by the model,
- AERMOD (\*.sur and \*.up), containing all of the standard variables needed by the model.

The detailed formats of these files are described in the particular model documentation, and it is recommended that the files generated be checked before use to ensure that they conform to the versions of the software being used. Common to several of these files is a variable called the stability category, which is calculated using TAPM outputs of wind speed, sensible heat flux and total solar radiation, in equations fitted to curves in Figure 6.13 of Pasquill (1974).

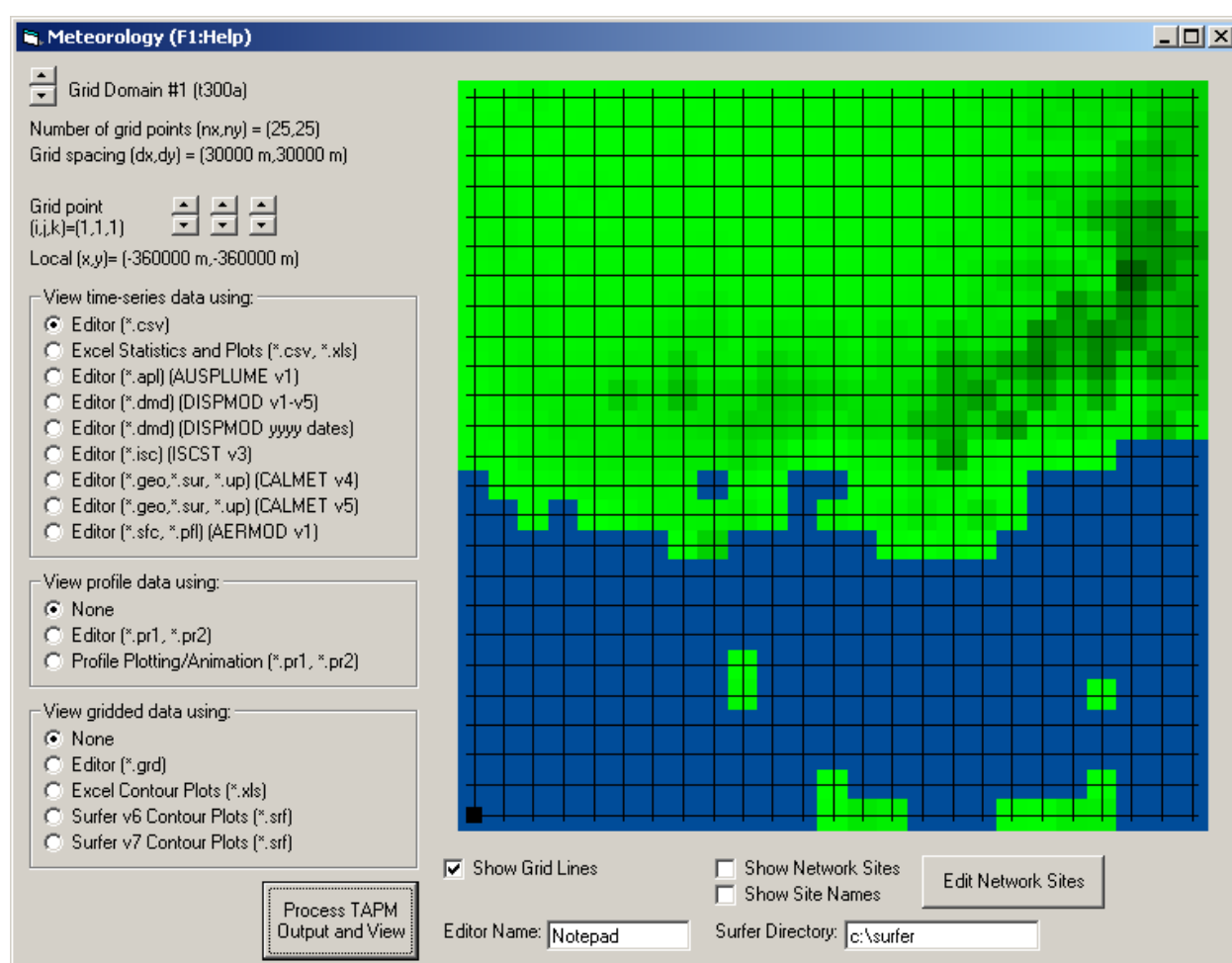


Figure 13. Analyse Output – Meteorology Window.

The next type of file that can optionally be viewed with the default text editor or by **Profile Plotting/Animation** (see Section 3.3 and Figure 14) are files of meteorological vertical profiles, either as hourly averaged profiles (\*.pr1), or time-averaged profiles for each hour of the day and for all hours of the day (\*.pr2). The file names use the Run File Name Prefix for the grid selected (e.g. t100a), then '\_m' for 'meteorology', with the (i, j) grid coordinate and the file name extension. For example, if the grid point (3, 2) was chosen, the file names would be

t100a\_m003002.pr1 and t100a\_m003002.pr2. The files contain comma delimited columns of meteorological variables, including the

- vector wind speed WSPD ( $\text{m s}^{-1}$ ),
- vector wind direction WDIR ( $^{\circ}$ ),
- temperature TEMP ( $^{\circ}\text{C}$ ),
- relative humidity RHUM (%),
- potential temperature POTTEMP (K),
- specific humidity of water vapour QVAP ( $\text{kg kg}^{-1}$ ),
- specific humidity of cloud water QCLD ( $\text{kg kg}^{-1}$ ),
- turbulence kinetic energy TKE ( $\text{m}^2 \text{s}^{-2}$ ),
- scalar wind speed SWSPD ( $\text{m s}^{-1}$ ),
- potential wind power density WPDEN ( $\text{W m}^{-2}$ ) (equal to half the density of air multiplied by the cube of the scalar wind speed),
- height above the ground HEIGHT (m).

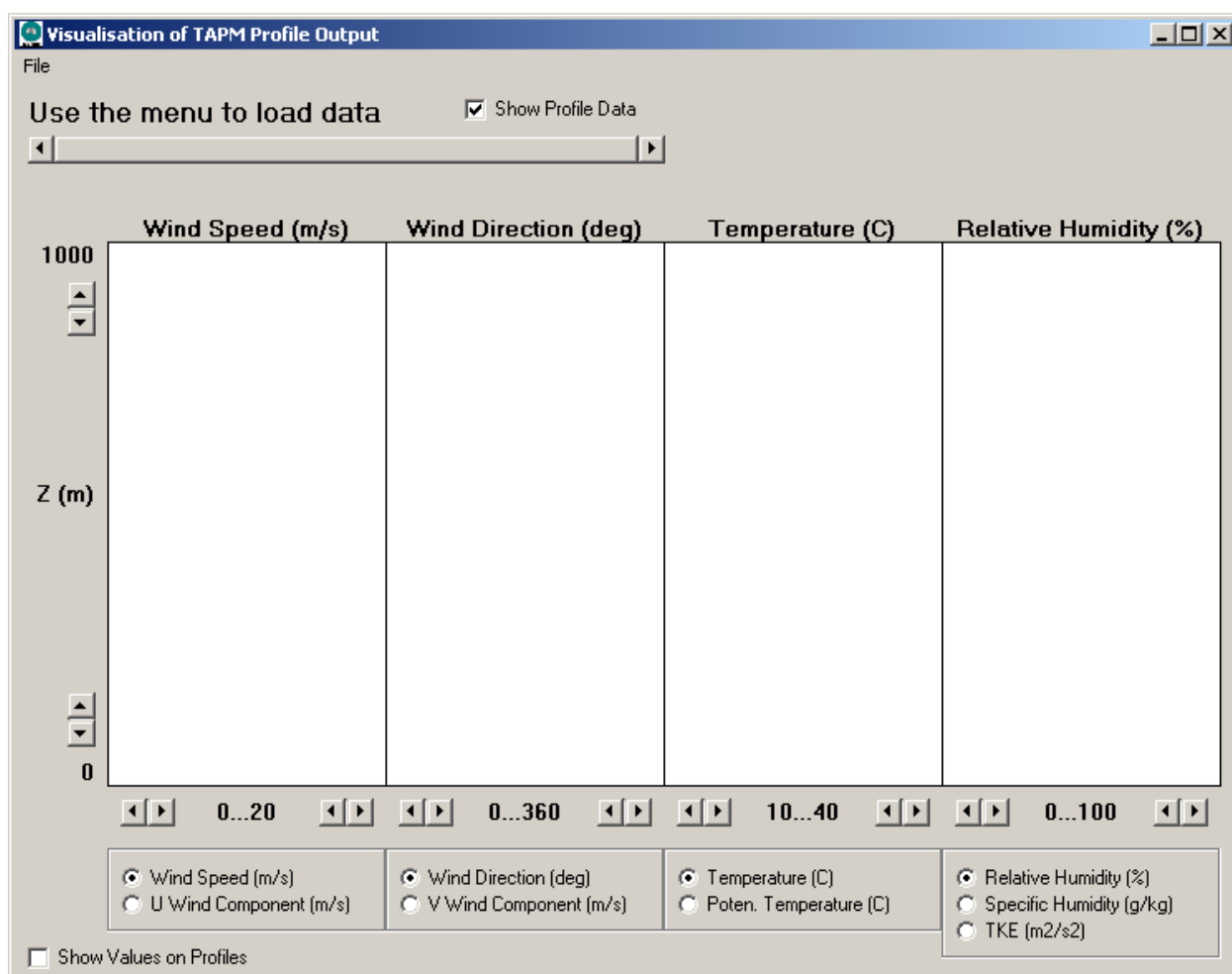


Figure 14. Profile Plotting/Animation Window.

The last types of file that can optionally be viewed with the default text editor, Excel or (optionally) Surfer (Golden software), are files of gridded meteorological summary statistics at the selected model level. These grids are averaged over the length of the model run for all variables, except for rainfall, which is the total rainfall (mm) for the run. The files are Surfer type grid files (ASCII format) with information for a particular variable contained in each file. The variables are the



- vector wind speed WSPD ( $\text{m s}^{-1}$ ),
- vector wind direction WDIR ( $^{\circ}$ ),
- temperature TEMP ( $^{\circ}\text{C}$ ),
- relative humidity RHUM (%),
- scalar wind speed SWSPD ( $\text{m s}^{-1}$ ),
- potential wind power density WPDEN ( $\text{W m}^{-2}$ ),
- rainfall total for the run RAIN (mm).

The file names use the Run File Name Prefix for the grid selected (e.g. t100a), then ‘\_’ with the variable name, then the model level k and the file name extension. For example, if the grid level  $k = 1$  was chosen, the file name for vector wind speed would be t100a\_wspd01.grd. If a Surfer option (Version 6 or 7/8 Scripts) is chosen for viewing these files, then a batch file (surfer.bat) and script file (surfer.inp) are used to plot the grids and save them to file (\*.srf). The network positions and labels are also included on the Surfer plots as overlays, obtained from a separately saved file (e.g. t100a\_netw.csv). Note that the x, y coordinates are in *meteorological* grid units, not local coordinates (m), but this can be changed by editing the header in the grid files, or within Surfer.

The controls along the bottom of the window allow selection of the default text editor, the directory name for Surfer, the display of grid lines in the picture, and the display and editing of network sites as described in Section 3.1.

### 3.2.3 Pollution

Figure 15 shows the **Analyse Outputs – Pollution Window**, which allows extraction of time series, profiles and summary statistics of pollution, independent of the GIS Visualisation analyses. Each pollutant needs to be analysed separately.

At the top of the window is a slider control that allows a particular grid to be chosen. Information on the particular grid dimensions and grid spacing is also displayed for information. Below this are two sliders that control an (i, j) horizontal grid point selection, which is used for the model output extraction process. The horizontal grid point (i, j) can also be selected graphically with the left mouse button in the picture at the right of the window. The local coordinates (m) of the selected horizontal grid point are displayed under these sliders for information. Particular pollutants need to be chosen for processing, along with an averaging period (hour-ending – optionally a running average), and whether it is a concatenated or subset file (see Utilities in Section 3.3), using the controls provided. A non-standard or externally generated species can also be processed by entering the species name. The **Process TAPM Output and View** button at the bottom of the window processes the TAPM pollution output files and generates various forms of processed output files as described below. The processing is done through a batch file glc2ts.bat. Once a pollutant species has been processed, the Load button at the top right of the window can be selected to display a colour-shaded map of concentration statistics, with controls for various types of statistics (see below) also displayed underneath the Load button. The statistics are obtained from a file (\*\_cstats.csv) that can also be examined outside of the GUI, and that can be easily input into a spreadsheet package or a Geographical Information System.

Time series of pollution variables are output in various formats including a comma delimited form (\*.csv), which can be viewed with the default text editor, or with Excel which includes various statistics and plots of the information. The file name uses the Run File Name Prefix for the grid and pollutant selected (e.g. t100aso2), then ‘\_c’ for ‘concentration’, with the (i, j) grid coordinate and the .csv extension. For example, if the grid point (3, 2) was chosen, the file name would be t100aso2\_c003002.csv. The first three columns of information in the file are the date, the hour of the day (e.g. hour 1 is the hourly average from hours 0–1) and the model run time

(elapsed hour from the start of the model run). The next three columns are the concentration at the selected grid point CONC ( $\mu\text{g m}^{-3}$  or ppb), maximum concentration on the grid CMAX ( $\mu\text{g m}^{-3}$  or ppb) and the local maximum concentration for a  $5 \times 5$  sub-grid region surrounding the selected grid point CLOC ( $\mu\text{g m}^{-3}$  or ppb). The concentration units depend on the pollutant mode being used, and are  $\mu\text{g m}^{-3}$  in tracer mode, or  $\mu\text{g m}^{-3}$  for APM and ppb for the other pollutants in chemistry mode. If a \*.c3d file exists, then a \*.pr3 file is also produced that contains concentration profiles for all model heights output.

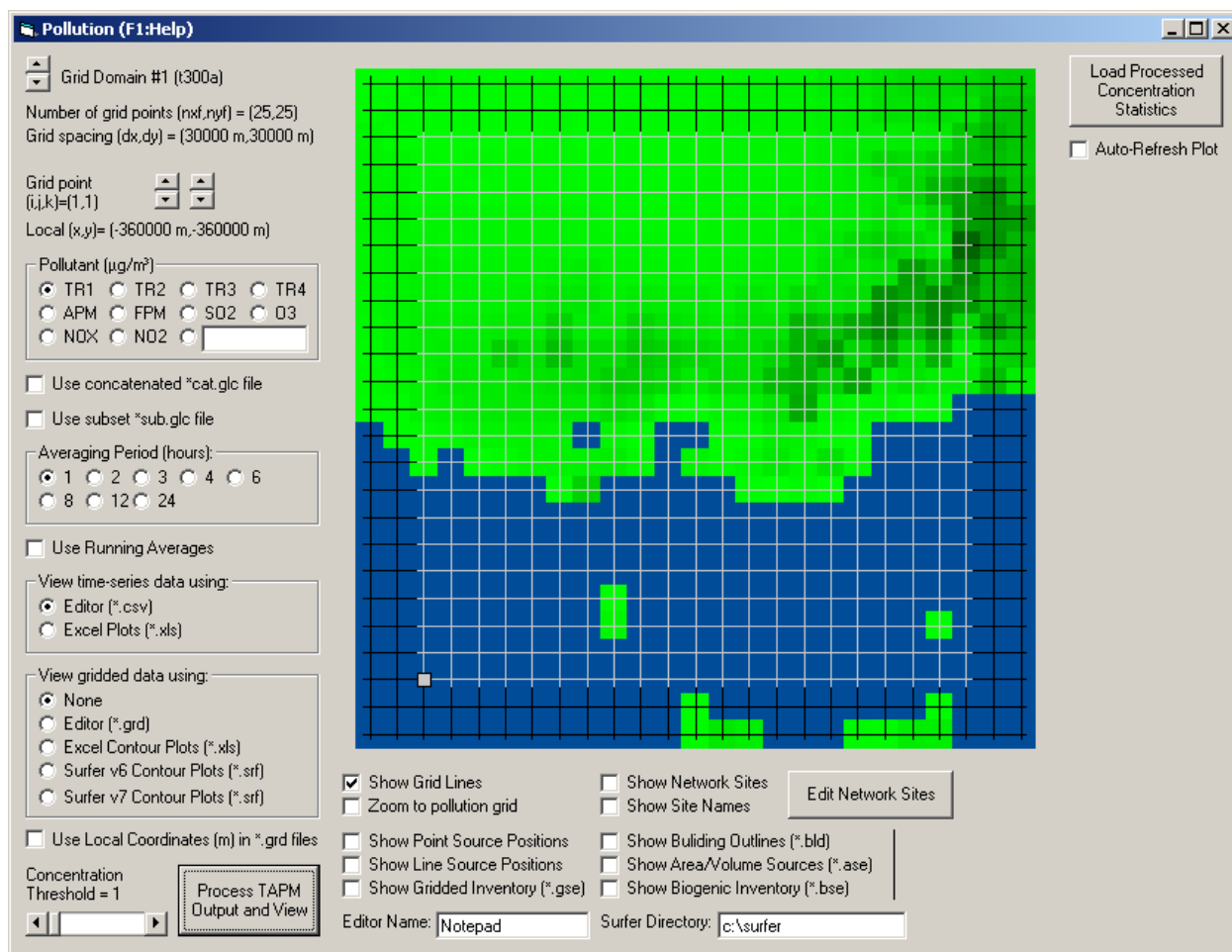


Figure 15. Analyse Output – Pollution Window.

Gridded summary statistics can optionally be viewed with the default text editor, Excel or Surfer. The files are Surfer type grid files with information for a particular variable contained in each file. The variables are the average concentration AVG ( $\mu\text{g m}^{-3}$  or ppb), the highest or maximum concentration MAX ( $\mu\text{g m}^{-3}$  or ppb), the 2<sup>nd</sup>–10<sup>th</sup> highest concentration ( $\mu\text{g m}^{-3}$  or ppb), the number of averaging periods when the concentration is greater than some threshold value NPG, and the number of days that concentration is greater than some threshold value NDG. For an annual run, the 2<sup>nd</sup> and 9<sup>th</sup> highest concentration correspond to the hourly-averaged 99.98 and 99.9 percentiles, while other statistics available are the 88<sup>th</sup> highest (annual hourly-averaged 99<sup>th</sup> percentile), 176<sup>th</sup> highest (annual hourly-averaged 98<sup>th</sup> percentile), 440<sup>th</sup> highest (annual hourly-averaged 95<sup>th</sup> percentile), and 880<sup>th</sup> highest (annual hourly-averaged 90<sup>th</sup> percentile). If the optional concentration variance calculation was used for the model run, then other statistics include the standard deviation of the concentration (square-root of the variance) corresponding to the maximum mean concentration STDM, and the MAX10min, MAX03min, MAX01min and MAX01sec statistics (corresponding to the 10, 3 and 1 minute average, and 1 second average).

maximum concentration, respectively). These peak concentrations will only be meaningful for long (e.g. annual) runs. The mean concentration threshold value can be set using the slider provided at the bottom left of the window. Note that not all grid files are automatically viewed. The file names use the Run File Name Prefix for the grid selected and the pollutant (e.g. t100aso2), then ‘\_c’ with the variable name and optionally the threshold value and the extension .grd. For example, for the pollutant SO<sub>2</sub> with a threshold value of 1, two sample file names would be t100aso2\_cavg.grd and t100aso2\_cnpg001.grd. If the Surfer option is chosen for viewing these files, then a batch file (surfer.bat) and script file (surfer.inp) are used to plot the grids and save them to file (\*.srf). The network positions and labels are also included on the plots as overlays, obtained from a separately saved file (e.g. t100a\_netw.csv). Similarly, the gridded option allows viewing of dry and wet deposition files directly output from the model when in chemistry mode, with deposition in units of  $\mu\text{g m}^{-2}$  per run-length (e.g. for a year-long run the units will be  $\mu\text{g m}^{-2} \text{ year}^{-1}$ ).

The controls along the bottom of the window allow selection of the default text editor, the directory name for Surfer, the display of grid lines in the picture, the display of various emission source positions or grid outlines, building block positions, and the display and editing of network sites as described in Section 3.1.

### 3.3 Utilities

Several **Utilities** can be selected from the **Main Window** menu bar at the top of Figure 1:

- Run GIS Visualisation: allows the GIS Visualisation software to be run without processing TAPM results first (this can also be done by running GIS\_PC1.exe from explorer or the command line);
- Run Profile Plotting/Animation: allows TAPM \*.pr1 and \*.pr2 formatted files to be viewed and animated in time graphically without processing TAPM results first (this can also be done by running PRF\_PLOT.exe from explorer or the command line);
- Convert selected \*.out and \*.rfl files for a particular date range to an ASCII \*.outa file using TAPM2OUTA.exe, with \*.outa file format described below;
- Convert \*.glcr file to ASCII \*.glca file: converts a selected TAPM \*.glcr file into an ASCII \*.glca file, using GLC2GLCA.exe, with \*.glca file format described below;
- Concatenate \*.glcr file(s) into a \*.cat.glcr file: concatenates selected \*.glcr file(s) (in alphabetical order) into a single \*.glcr file with the file name taken from the file name prefix of the first selected file (e.g. t100atr1) and \*.cat.glcr appended (e.g. t100atr1cat.glcr). Note that grid dimensions of the selected files are checked for consistency, but other characteristics such as dates/times/coordinates/units/etc are not checked – these extra checks are left to the user, so proceed with caution;
- Convert a \*.glcr file for a particular date range to a \*.sub.glcr file using GLC2GLCSUB.exe;
- Calculate a weighted sum of multiple \*.glcr files (for each grid point for each hour) using GLC2GLCMATH.EXE, and save the resulting concentration in a new \*.glcr file that can itself be processed through the GUI. Note that grid dimensions of the selected files are checked for consistency, but other characteristics such as dates/times/coordinates/units/etc are not checked – these extra checks are left to the user, so proceed with caution.

The file format for the \*.outa file is as follows (fixed format with READ1 using format 10i8 (10 integers per line with each integer using eight characters), and READ2 using format 10f8.2 (10 floating point numbers per line with each number using eight characters with two digits after the decimal point))

*READ1: nx, ny, nz, dx, dy*

*READ2: ((zs(i,j),i=1,nx),j=1,ny)*

*READ2: (((z(i,j,k),i=1,nx),j=1,ny),k=1,nz)*

*Repeated for each simulation hour:*

*READ1: date, hour*  
*READ2: ((tsr(i,j),i=1,nx),j=1,ny)*  
*READ2: ((net(i,j),i=1,nx),j=1,ny)*  
*READ2: ((sens(i,j),i=1,nx),j=1,ny)*  
*READ2: ((evap(i,j),i=1,nx),j=1,ny)*  
*READ2: ((ustar(i,j),i=1,nx),j=1,ny)*  
*READ2: ((pvstar(i,j),i=1,nx),j=1,ny)*  
*READ2: ((ptstar(i,j),i=1,nx),j=1,ny)*  
*READ2: ((wstar(i,j),i=1,nx),j=1,ny)*  
*READ2: ((zmix(i,j),i=1,nx),j=1,ny)*  
*READ2: ((tscr(i,j),i=1,nx),j=1,ny)*  
*READ2: ((rhsrc(i,j),i=1,nx),j=1,ny)*  
*READ2: ((tsurf(i,j),i=1,nx),j=1,ny)*  
*READ2: ((rain(i,j),i=1,nx),j=1,ny)*  
*READ2: (((ws(i,j,k),i=1,nx),j=1,ny),k=1,nz)*  
*READ2: (((wd(i,j,k),i=1,nx),j=1,ny),k=1,nz)*  
*READ2: (((ww(i,j,k),i=1,nx),j=1,ny),k=1,nz)*  
*READ2: (((tt(i,j,k),i=1,nx),j=1,ny),k=1,nz)*  
*READ2: (((rh(i,j,k),i=1,nx),j=1,ny),k=1,nz)*  
*READ2: (((pt(i,j,k),i=1,nx),j=1,ny),k=1,nz)*  
*READ2: (((tke(i,j,k),i=1,nx),j=1,ny),k=1,nz)*

with variables

<i>nx</i>	number of west-east (x) grid points for the meteorological grid,
<i>ny</i>	number of south-north (y) grid points for the meteorological grid,
<i>nz</i>	number of vertical (z) grid points (levels) for the meteorological grid,
<i>dx</i>	west-east (x) grid spacing (m) for the meteorological grid,
<i>dy</i>	south-north (y) grid spacing (m) for the meteorological grid,
<i>zs</i>	smoothed terrain height (m),
<i>z</i>	height above the terrain (m),
<i>date</i>	date (yyyymmdd),
<i>hour</i>	hour of simulation (1–24),
<i>tsr</i>	total solar radiation ( $\text{W m}^{-2}$ ),
<i>net</i>	net radiation ( $\text{W m}^{-2}$ ),
<i>sens</i>	sensible heat flux ( $\text{W m}^{-2}$ ),
<i>evap</i>	evaporative heat flux ( $\text{W m}^{-2}$ ),
<i>ustar</i>	friction velocity scale ( $\text{m s}^{-1}$ ),
<i>pvstar</i>	potential virtual temperature scale (K),
<i>ptstar</i>	potential temperature scale (K),
<i>wstar</i>	convective velocity scale ( $\text{m s}^{-1}$ ),
<i>zmix</i>	mixing height (m),
<i>tscr</i>	screen-level temperature (K),
<i>rhsrc</i>	screen-level relative humidity (%),
<i>tsurf</i>	surface temperature (K),
<i>rain</i>	rainfall ( $\text{mm hr}^{-1}$ ),
<i>ws</i>	horizontal wind speed ( $\text{m s}^{-1}$ ),
<i>wd</i>	horizontal wind direction ( $^{\circ}$ ),
<i>ww</i>	vertical velocity ( $\text{m s}^{-1}$ ),
<i>tt</i>	temperature (K),
<i>rh</i>	relative humidity (%),
<i>pt</i>	potential temperature (K),
<i>tke</i>	turbulence kinetic energy ( $\text{m}^2 \text{s}^{-2}$ ).

Note that the meteorological grid (array) is oriented so that

*grid( 1, 1, 1)* is the south-west corner at the surface,  
*grid(nx, 1, 1)* is the south-east corner at the surface,  
*grid( 1,ny, 1)* is the north-west corner at the surface,  
*grid(nx,ny, 1)* is the north-east corner at the surface,  
 and similarly for array index  $k = nz$  at the top of the grid.

The file format for \*.glca files is as follows (space delimited free format)

*READ: nx, ny*

*Repeated for each simulation hour:*

*READ: idate, itime*

*READ: ((ic(i,j),i=1,nx),j=1,ny)*

with variables

*nx*            number of west-east (x) grid points for the concentration grid,  
*ny*            number of south-north (y) grid points for the concentration grid,  
*idate*        date (yyyymmdd),  
*itime*        hour of simulation,  
*ic*            concentration array oriented so that  
               *ic( 1, 1)* is the south-west corner,  
               *ic(nx, 1)* is the south-east corner,  
               *ic(1 ,ny)* is the north-west corner,  
               *ic(nx,ny)* is the north-east corner.

## 4 TAPM FILES

The GUI (TAPM\_GUI.EXE) sets up all of the TAPM input files needed by the model (TAPM.EXE). These include

- a batch file to run the model (\*.bat),
- a general input file read by the model (\*.inp),
- surface information for each grid nest (\*.top),
- synoptic information at the grid centre and some time-varying surface parameters (\*.syn),
- three-dimensional gridded synoptic analyses (\*.syg),
- optional near-surface wind data assimilation (\*.obs) (not through GUI – see Section 4.1),
- optional pollution background file (\*.cbg) (not through GUI),

Emission Files (see Section 4.2)

- optional point sources (\*.pse),
- optional line or area/volume sources (\*.lse and \*.ase),
- optional grid-based surface sources (\*.gse, \*.bse, \*.whe, \*.vpx, \*.vdx, \*.vlx, and \*.vpv) (not through GUI),

and a Building File (see Section 4.3)

- optional building file (\*.bld).

When the model is run, two types of nesting files are generated to provide boundary conditions for the inner nested grids

- meteorology (\*.nes),
- pollution (\*.tbc).

These nesting files can be deleted by the user when the model run is finished.

The model output files

- general meteorology (\*.out),
- rainfall (\*.rfl),
- snowfall (\*.sfl),
- pollution concentration at ground level (\*.glcr),

- pollution concentration at available output levels (\*.c3d),
- deposition (\*.dry.grd and \*.wet.grd),
- LPM particle positions (\*tr1.p3da in tracer mode, or \*apm.p3da in chemistry mode),
- final plume rise centreline heights for the point sources (\*.plr),
- gradual plume rise centreline heights for the point sources in LPM mode (\*.plrg),

are used by the GUI when analysing the output. Note that all model output that is averaged is specified at the end hour (i.e. an hourly average at hour 2 is the average of values between hours 1 and 2). General meteorology is output as hourly averages, rainfall is output as hourly total ( $\text{mm hr}^{-1}$ ), ground level concentrations are output as hourly averages in either  $\mu\text{g m}^{-3}$  (tracer mode or for APM and FPM) or ppb (chemistry mode except for APM and FPM) and deposition (dry and wet in chemistry mode) are output as  $\mu\text{g m}^{-2}$  for the model run period (i.e. an example file name for  $\text{SO}_2$  would be t100aso2\_dry.grd, and if the run length was for one month, then the units would be  $\mu\text{g m}^{-2} \text{ month}^{-1}$ ).

The final plume rise heights file (\*.plr) includes those point sources with non-zero plume rise. The file is comma delimited with columns for hour, source number, and final plume height (m). The gradual plume rise file (\*.plrg) includes hourly plume rise information for sources in LPM mode (see also the optional final plume rise output in the \*.plr file described previously). The values output are: *src#* - the source number; *t* - the plume material travel time (s); *w* - the plume vertical velocity ( $\text{m s}^{-1}$ ); *z* - the plume centreline height (m) above ground; *Ry*, *Rz* - the lateral and vertical plume radius (m), respectively; and *Dx*, *Dy* - the west-east and south-north plume distance (m) from the source, respectively.

***A listing file (\*.lis) is also produced when the model is run, and contains information which reflects the options chosen by the user and other diagnostic information for the model run. This file should be checked by the user to ensure that the model has run as expected.***

#### 4.1 Meteorological Data Assimilation File (\*.obs)

Assimilation of winds can optionally be included in a model simulation. The existence of an extra file with name: Run File Name Prefix plus a \*.obs extension (e.g. if the outer grid Run File Name Prefix is t300a, then the wind observations need to be in a file called t300a.obs) turns on the assimilation option. The wind speed and direction observations are used to nudge the predicted solution towards the observations.

The file format for the wind data assimilation \*.obs files is as follows (free format)

*READ: nsite*

*READ: sdate, shour, (x\_site(i),y\_site(i),i=1,nsite)*

*READ: sdate, shour, (z\_site(i),r\_site(i),i=1,nsite)*

*READ: sdate, shour, (k\_site(i),q\_site(i),i=1,nsite)*

*Repeated for each simulation hour*

*READ: idate, ihour, (ws\_site(i),wd\_site(i),i=1,nsite)*

with variables

*nsite*            number of observation sites,

*sdate*           start date of simulation (yyyymmdd),

*shour*           start hour of simulation (1–24),

*x\_site*           west-east (x) site location in local coordinates (m),

*y\_site*           south-north (y) site location in local coordinates (m),

*z\_site*           vertical (z) site location above the ground (m),

*r\_site*           radius of influence (m) for each site,

*k\_site*           number of vertical model levels to assimilate each side of the nearest model level to the observation,

*q\_site*           data quality indicator (0.0–1.0) (0.0 = ignore, 1.0 = reliable),

*idate*           date of observations (yyyymmdd),

*ihour* hour of observations (1–24),  
*ws\_site* site wind speed ( $\text{m s}^{-1}$ ),  
*wd\_site* site wind direction ( $^{\circ}$ ).

Note that missing values are assumed when the observed wind speed and direction are out of the normal range (speed  $< 0 \text{ m s}^{-1}$  or  $> 90 \text{ m s}^{-1}$ ; direction  $< 0^{\circ}$  or  $> 360^{\circ}$ ), and dates and times are assumed to be sequential hourly averages (end hour of average).

Nudging is done at the number of model levels specified, and care should be taken when nudging to near-surface winds, as winds can change significantly with height in the lowest 100 m or so of the atmosphere. The representative horizontal radius of influence for a site can vary according to the terrain surrounding the observation. For example, data measured in a valley should not unduly influence the model solution outside the valley. This also applies to how well an observation is representative of the general flow in the surrounding region. It is recommended that values of *r\_site* lie between 5000 m and 30000 m, with 20000 m being a typical value in flat or gentle terrain.

## 4.2 Emission Files (\*.pse, \*.lse, \*.ase, \*.gse, \*.bse, \*.whe, \*.vpx, \*.vdx, \*.vlx, and \*.vpv)

Hourly varying emission information can optionally be read by the model for files with

- Point Source Emissions (\*.pse),
  - Line Source Emissions (\*.lse),
  - Area/volume Source Emissions (\*.ase),
- and seven grid-based surface emission files
- Gridded Surface Emissions (\*.gse), independent of temperature,
  - Biogenic Surface Emissions (\*.bse), at  $T = 30^{\circ}\text{C}$  and  $PAR = 1000 \mu\text{mol m}^{-2} \text{s}^{-1}$  for VOC,
  - Wood Heater Emissions (\*.whe), at  $T = 10^{\circ}\text{C}$  for all pollutant species,
  - Vehicle Petrol eXhaust emissions (\*.vpx), at  $T = 25^{\circ}\text{C}$  for VOC,  $\text{NO}_x$  and CO,
  - Vehicle Diesel eXhaust emissions (\*.vdx), independent of temperature,
  - Vehicle Lpg eXhaust emissions (\*.vlx), at  $T = 25^{\circ}\text{C}$  for VOC,  $\text{NO}_x$  and CO,
  - Vehicle Petrol eVaporative emissions (\*.vpv), at  $T = 25^{\circ}\text{C}$  for VOC,

with grid-based emissions adjusted to model temperature  $T$  ( $^{\circ}\text{C}$ ) and photo-synthetically active radiation  $PAR$  ( $\mu\text{mol m}^{-2} \text{s}^{-1}$ ) throughout a particular simulation. Note that vegetation temperature is used for biogenic emissions, a running 24-hour average screen-level temperature is used for wood heater emissions, and screen-level temperature is used for vehicle emissions. The temperature corrections used in the model are based on curve-fits to data described by Ng *et al.* (2000), which for vehicle emissions are based on the US model MOBILE5. The model assumes that the file names of these files for a particular run use the Run File Name Prefix of the outer grid with the corresponding extension (e.g. t300a.pse, t300a.lse, t300a.ase, t300a.gse, t300a.bse, t300a.whe, t300a.vpx, t300a.vdx, t300a.vlx, and t300a.vpv). The model can be run with any combination of these files, or no emission files at all, but care should be taken when changing pollutant mode (tracer or chemistry). The listing file (\*.lis) will indicate what types of emission information is being used by the model. If generated by the user, these files should be in ASCII, free format, and should be placed in the Run Directory. If the end of file is reached before the end of the TAPM run, the file is rewound and read again (i.e. the emissions cycle over time).

The required format for the \*.pse file can be seen from the following (also see Section 3.1.2 for GUI entry of emissions)

*READ: nsource, nhour*

*do i = 1, nsource*

*READ: mode, x\_pse, y\_pse, h\_pse, r\_pse, e\_pse, f\_no\_pse, f\_fpm\_pse*

*enddo*

```

do Until End of File
  do i = 1, nsource
    IF TRACER MODE, READ: w_pse, t_pse, tr1_pse, tr2_pse, tr3_pse, tr4_pse
    IF CHEMISTRY MODE, READ: w_pse, t_pse, apm_pse, nox_pse, so2_pse, rs_pse
  enddo
enddo
where
nsource      number of point sources,
nhour        number of hours over which the time-varying emissions cycle (1=constant),
mode         controls the source mode (-1=OFF, 0=EGM, 1=EGM+LPM),
x_pse        west-east (x) local coordinate of the stack (m),
y_pse        south-north (y) local coordinate of the stack (m),
h_pse        stack height above the ground (m),
r_pse        internal stack radius (m),
e_pse        buoyancy enhancement factor (1=no enhancement due to near-by stacks),
f_no_pse     fraction of the NOx emission that is NO (0 = no NO, 1 = all NO),
f_fpm_pse    fraction of the APM emission that is FPM (0 = no FPM, 1 = all FPM),
w_pse        stack exit velocity (m s-1),
t_pse        stack exit temperature (K),
tr1_pse      emission rate of TR1 (g s-1),
tr2_pse      emission rate of TR2 (g s-1),
tr3_pse      emission rate of TR3 (g s-1),
tr4_pse      emission rate of TR4 (g s-1),
apm_pse      emission rate of APM (g s-1),
nox_pse      emission rate of NOx (g s-1) (expressed as NO2),
so2_pse      emission rate of SO2 (g s-1),
rs_pse       emission rate of Rsmog (g s-1).

```

The required format for the \*.lse or \*.ase file can be seen from the following

```

READ: nsource, nhour
do i = 1, nsource
  READ: mode, x0, y0, h0, x1, y1, h1, f_no, f_fpm
enddo
do Until End of File
  do i = 1, nsource
    IF TRACER MODE, READ: tr1, tr2, tr3, tr4
    IF CHEMISTRY MODE, READ: apm, nox, so2, rs
  enddo
enddo
where
nsource      number of sources,
nhour        number of hours over which the time-varying emissions cycle (1=constant),
mode         controls the source mode (-1=OFF, 0=EGM),
x0           west-east (x) local coordinate of the source (m) (start coordinate),
y0           south-north (y) local coordinate of the source (m) (start coordinate),
h0           source height above the ground (m) (start coordinate),
x1           west-east (x) local coordinate of the source (m) (end coordinate),
y1           south-north (y) local coordinate of the source (m) (end coordinate),
h1           source height above the ground (m) (end coordinate),
f_no         fraction of the NOx emission that is NO (0 = no NO, 1 = all NO),
f_fpm        fraction of the APM emission that is FPM (0 = no FPM, 1 = all FPM),

```



<i>tr1</i>	emission rate of TR1 ( $\text{g s}^{-1}$ ),
<i>tr2</i>	emission rate of TR2 ( $\text{g s}^{-1}$ ),
<i>tr3</i>	emission rate of TR3 ( $\text{g s}^{-1}$ ),
<i>tr4</i>	emission rate of TR4 ( $\text{g s}^{-1}$ ),
<i>apm</i>	emission rate of APM ( $\text{g s}^{-1}$ ),
<i>nox</i>	emission rate of $\text{NO}_x$ ( $\text{g s}^{-1}$ ) (expressed as $\text{NO}_2$ ),
<i>so2</i>	emission rate of $\text{SO}_2$ ( $\text{g s}^{-1}$ ),
<i>rs</i>	emission rate of Rsmog ( $\text{g s}^{-1}$ ).

Note that although the format is the same for both line and area/volume source files, line sources have emissions uniformly distributed along a straight line using the start and end points specified, whereas area/volume sources have emissions uniformly distributed within a volume (or x-y plane area, if heights are the same) with sides aligned along the Cartesian coordinate axes and side lengths  $|x1-x0|$ ,  $|y1-y0|$  and  $|h1-h0|$ , in the x, y, z directions respectively.

The required format for the \*.gse file can be seen from the structure of the following

```

READ: nx_gse, ny_gse, dx_gse, dy_gse, cx_gse, cy_gse
do Until End of File
  do j = 1, ny_gse
    do i = 1, nx_gse
      IF TRACER MODE, READ: tr1_gse, tr2_gse, tr3_gse, tr4_gse, dum_gse, dum_gse
      IF CHEMISTRY MODE, READ: apm_gse, nox_gse, so2_gse, rs_gse, no2_gse, fpm_gse
    enddo
  enddo
enddo
where
nx_gse      number of west-east (x) grid points for the emissions grid,
ny_gse      number of south-north (y) grid points for the emissions grid,
dx_gse      west-east (x) grid spacing (m) for the emissions grid,
dy_gse      south-north (y) grid spacing (m) for the emissions grid,
cx_gse      west-east (x) grid centre local coordinate value (m) for the emissions grid,
cy_gse      south-north (y) grid centre local coordinate value (m) for the emissions grid,
tr1_gse     emission rate of TR1 ( $\text{g s}^{-1}$ ),
tr2_gse     emission rate of TR2 ( $\text{g s}^{-1}$ ),
tr3_gse     emission rate of TR3 ( $\text{g s}^{-1}$ ),
tr4_gse     emission rate of TR4 ( $\text{g s}^{-1}$ ),
dum_gse     not used,
apm_gse     emission rate of APM ( $\text{g s}^{-1}$ ),
nox_gse     emission rate of  $\text{NO}_x$  ( $\text{g s}^{-1}$ ) (expressed as  $\text{NO}_2$ ),
so2_gse     emission rate of  $\text{SO}_2$  ( $\text{g s}^{-1}$ ),
rs_gse      emission rate of Rsmog ( $\text{g s}^{-1}$ ),
no2_gse     emission rate of  $\text{NO}_2$  ( $\text{g s}^{-1}$ ).
fpm_gse     emission rate of FPM ( $\text{g s}^{-1}$ ).
```

The format for the other grid-based emission files (\*.bse, \*.whe, \*.vpx, \*.vdx, \*.vlx, and \*.vpv) are the same as for the \*.gse file, but the grid characteristics do not necessarily have to match the \*.gse emission grid characteristics.

### 4.3 Building File (\*.bld)

The effect of building wakes on plume rise and dispersion is based on the Plume Rise Model Enhancements (PRIME) approach of Schulman *et al.* (2000). The PRIME model uses an along-wind coordinate system, and so first each building is transformed to be in this system. Effective building dimensions and cavity and wake dimensions are then calculated for each building and

are used to determine the combined wake meteorology and turbulence. Plume rise is affected by the modified meteorology and turbulence for point sources in both EGM and LPM modes, while dispersion is influenced only for point source plumes in LPM mode. LPM calculations in the model are done for both the cavity and wake regions, rather than specifying a uniform concentration in the cavity as is done in PRIME.

We use the PRIME procedure to define wake characteristics for each building block. The effects of overlapping wakes from multiple building blocks, whether from the same multi-level or multi-tiered physical building, or from multiple physical buildings, can be treated by combining the meteorology and turbulence. For a particular point in space, the combined (over all building blocks)

- streamline slope can be calculated by first calculating the maximum slope and the minimum slope, and then if the absolute value of the maximum value is greater than the absolute value of the minimum value, use the maximum value. Otherwise use the minimum value.
- horizontal wind speed factor is the minimum value.
- turbulence intensity is the maximum value.

The combined effects can then be used for the calculation of plume rise and dispersion – the above approach attempts to be conservative for expected ground-level pollution concentration.

The model assumes that the name for the building file (\*.bld) file uses the Run File Name Prefix of the outer grid with the corresponding extension (e.g. t300a.bld). This information can be input through the GUI or by creating the file externally as described below.

The required format for the \*.bld file can be seen from the following

*READ: nbld*

*do i = 1, nbld*

*READ: nbldc(i), hbld(i)*

*do j = 1, nbldc(i)*

*READ: xbld(i,j), ybld(i,j)*

*enddo*

*enddo*

where

*Nbld*            number of building blocks,

*nbldc*          number of corners for each building blocks (2–25),

*hbld*           height of each building block,

*xbld*           west-east (x) local coordinate of the building block corner (m),

*ybld*           south-north (y) local coordinate of the building block corner (m).

#### 4.4 Background Concentration File (\*.cbg)

An optional concentration background file can be provided (\*.cbg) that contains hourly concentrations for six species. If this file is available, it is used as inflow boundary conditions for the outer-most model grid. If \*.m3d files are being used to run the inner-most grid only, then the \*.cbg file will be used to provide boundary conditions for this grid. The file format is:

*do Until End of File*

*IF TRACER MODE, READ: date, hour, tr1\_cbg, tr2\_cbg, tr3\_cbg, tr4\_cbg, dum\_cbg, dum\_cbg*

*IF CHEMISTRY MODE, READ: date, hour, apm\_cbg, nox\_cbg, so2\_cbg, rs\_cbg, o3\_cbg, fpm\_cbg*

*enddo*

where

*date*           Date (yyyymmdd),

*hour*           Hour (1–24),

*tr1\_cbg*        Concentration of TR1 ( $\mu\text{g m}^{-3}$ ),

*tr2\_cbg*        Concentration of TR2 ( $\mu\text{g m}^{-3}$ ),

<i>tr3_cbg</i>	Concentration of TR3 ( $\mu\text{g m}^{-3}$ ),
<i>tr4_cbg</i>	Concentration of TR4 ( $\mu\text{g m}^{-3}$ ),
<i>dum_cbg</i>	Not used,
<i>apm_cbg</i>	Concentration of APM ( $\mu\text{g m}^{-3}$ ),
<i>nox_cbg</i>	Concentration of NO <sub>x</sub> (ppb),
<i>so2_cbg</i>	Concentration of SO <sub>2</sub> (ppb),
<i>rs_cbg</i>	Concentration of Rsmog (ppb),
<i>o3_cbg</i>	Concentration of O <sub>3</sub> (ppb),
<i>fpm_cbg</i>	Concentration of FPM ( $\mu\text{g m}^{-3}$ ),

Note that nitrogen dioxide background concentration is set equal to the nitrogen oxides background concentration, as is normally done for non-time-varying background concentration (available in the GUI).

## 5 ACKNOWLEDGEMENTS

Thanks to the US Geological Survey, Earth Resources Observation Systems (EROS) Data Center Distributed Active Archive Center (EDC DAAC) for the public domain global datasets of terrain height and land-use. Thanks to FAO/UNESCO for the global soil texture dataset. Thanks to Boston University and MODIS for the global monthly mean LAI datasets. Thanks to Geoscience Australia for the Australian terrain height dataset. Thanks to the US National Center for Atmospheric Research (NCAR) for the public domain dataset of long-term monthly average sea surface temperatures. Thanks to Paul Stewart, Terry Hart and the Bureau of Meteorology for allowing the LAPS and GASP analyses to be distributed with the model.

Thanks to Bill Physick and Julie Noonan for helping with the global terrain/land-use datasets, to Marcus Thatcher for additional processing of the global soil and leaf area index datasets, to Mary Edwards for updating the Surfer v6 scripts to Surfer v7 and for reviewing this manual, and to Russell Howden for his work on the GIS Visualisation software package.

The encouragement and feedback from both internal CSIRO users and externally licensed users of TAPM is much appreciated.

## 6 REFERENCES

- Hurley P.J. (2008). 'TAPM V4. Part 1: Technical Description', CSIRO Marine and Atmospheric Research Paper No. 25. 59 pp.
- Hurley P., Edwards M. and Luhar A. (2008). 'TAPM V4. Part 2: Summary of some verification studies', CSIRO Marine and Atmospheric Research Paper No. 26. 31 pp.
- Ng Y., Serebryanikova R. and Wong L. (2000). 'Application of the emissions modelling system EMS-95 to the Victorian Inventory', *Proceedings of the 15<sup>th</sup> International Clean Air Conference of CASANZ*, Sydney, 26-30 November 2000.
- Pasquill F. (1974). 'Atmospheric Diffusion', 2<sup>nd</sup> Edition, Wiley and Sons, London, 429 pp.
- Schulman L., Strimaitis D. and Scire J. (2000). 'Development and evaluation of the PRIME plume rise and building downwash model', *J. Air & Waste Manage. Assoc.*, **50**, 378-390.



#### Contact Us

Phone: 1300 363 400

+61 3 9545 2176

Email: [enquiries@csiro.au](mailto:enquiries@csiro.au)

Web: [www.csiro.au](http://www.csiro.au)

#### Your CSIRO

Australia is founding its future on science and innovation. Its national science agency, CSIRO, is a powerhouse of ideas, technologies and skills for building prosperity, growth, health and sustainability. It serves governments, industries, business and communities across the nation.