



### Voyage SS09-2005

Nature and origin of the Naturaliste Plateau and Diamantina Zone.  
 Professor Anthony J Crawford, UTAS (Chief Scientist)

#### Contribution to Australia's national benefit:

This geoscience research voyage aimed to investigate, by sampling and swath mapping, the nature and origin of the Naturaliste Plateau, a submarine plateau two-thirds the size of Tasmania, lying off the SW corner of Western Australia.

This plateau, often interpreted as a microcontinental block, lay very close to the triple-point between Australia, Antarctica and India before the breakup of Gondwana, and its basement rocks offer promise to elucidate the nature and age of rocks in this very poorly known region.

In a marine area noted for extensive resources, vital to the nation, the work of this voyage will provide a far more comprehensive understanding of the geological evolution of this region than is presently available.

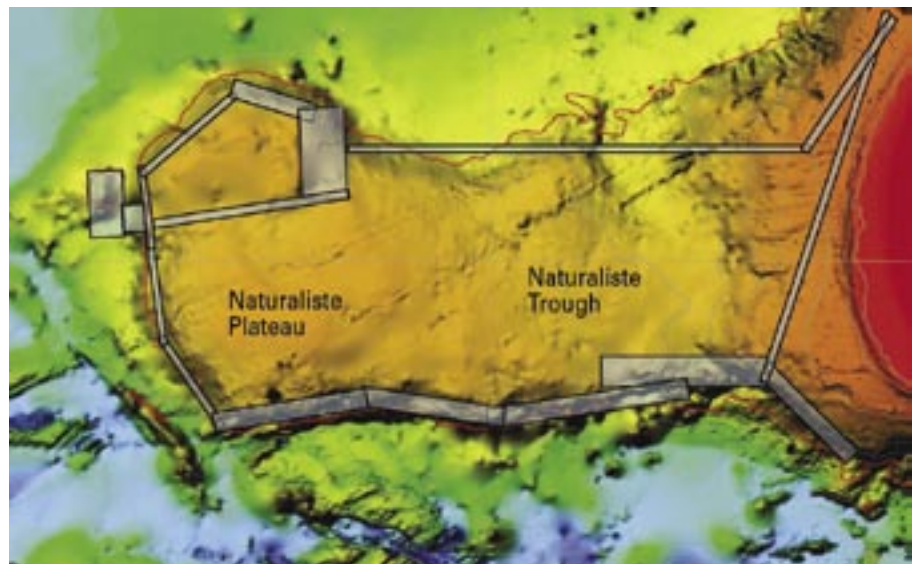
This knowledge, extending back to the very formation of three major tectonic plates, after the break up of Gondwana, the Australia, Antarctica and Greater India plates, will provide the most basic information of the formative geology of this area.

The new data will also have important ramifications for establishing Australia's maritime jurisdiction zone in this region.

#### Itinerary

Depart Fremantle 1600 hrs,  
 Friday 21st October 2005.

Arrive Fremantle 0800 hrs,  
 Wednesday 16th November 2005.



#### > SS09-2005 voyage track:

Ship track clockwise from Fremantle and back showing swath areas covered during the voyage.