

Voyage SS04-2005

Quaternary reefs and surrounding benthic habitats in the southern Gulf of Carpentaria.

Dr. Peter T. Harris (Chief Scientist), Geoscience Australia

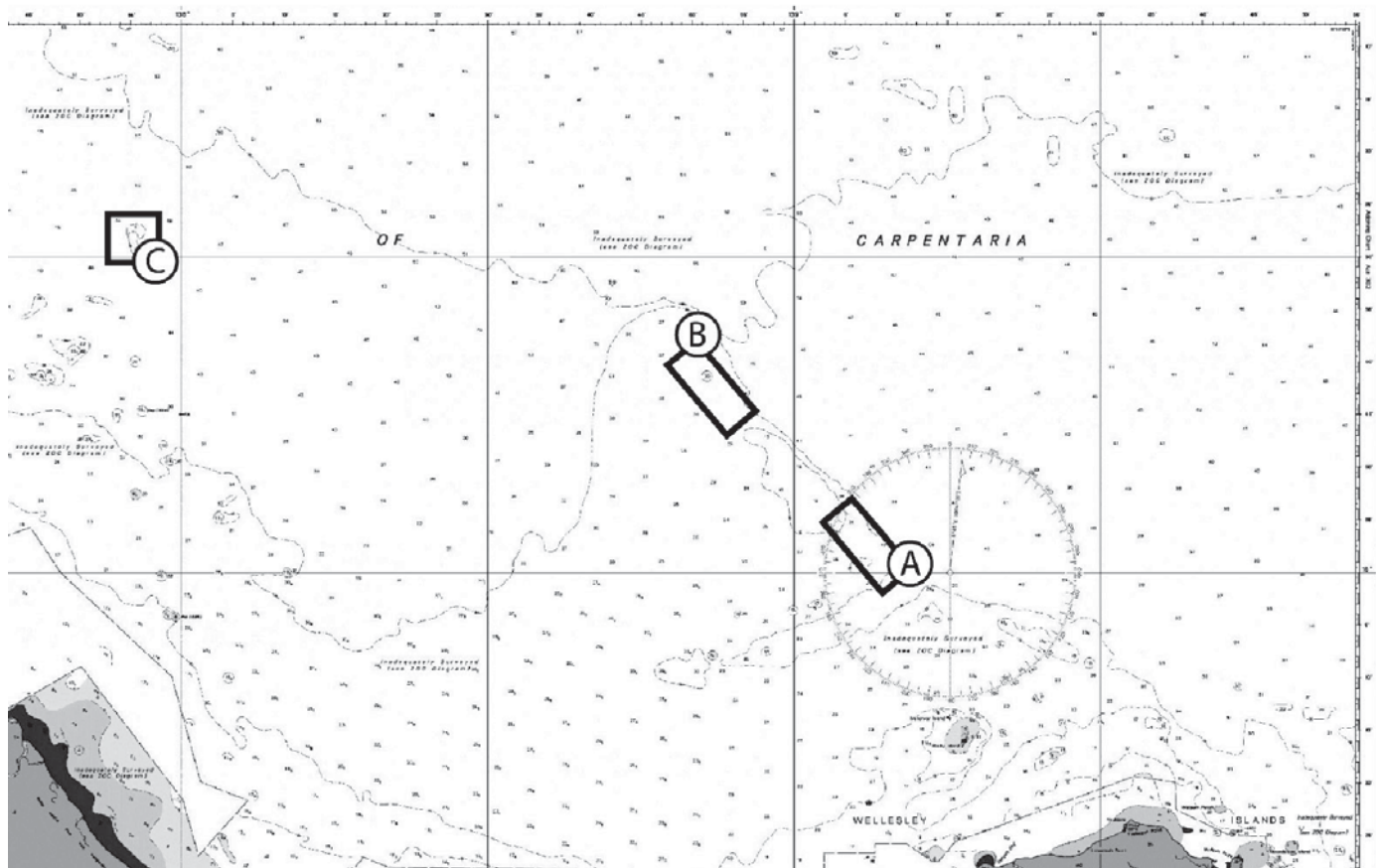
Collaborative Charters 2004/2005			Environmentally Sustainable Australia					Frontier Technologies	Safeguarding Australia
			1	2	5	6	7	4	2
SS04/2005	Research Charter, Gulf of Carpentaria submerged reefs and benthic habitats.	NOO/GA							

The potential of the voyage to contribute to Australia’s national benefit:

Peter Harris and his colleagues recently found evidence for reef growth in the southern end of the Gulf of Carpentaria. This was a totally unexpected find. It is important as it calls for a better

understanding of reef development and growth. This is important in Australia where reefs are important to tourism, fishing, coastal use and development.

The work done on the voyage will support better planning for the management of this area of the Gulf, and the development of recommendations for its preservation and conservation.



> **SS04-2005 voyage track:** Part of AUS Chart 304 showing locations of the work area in the southern Gulf of Carpentaria region.