

RV *Investigator* Voyage Plan

Voyage #:	IN2015_T01		
Voyage title:	Transit Hobart to Sydney		
Depart:	1500, Hobart (Self's Point), Sunday, 10 May 2015		
Arrive:	1600, Sydney (Garden Island), Wednesday, 13 May 2015		
Voyage Manager:	Tegan Sime	Contact details:	tegan.sime@csiro.au



Voyage objectives

Transit to Sydney in preparation for IN2015_V02.

Testing of any outstanding SFR issues.

Overall activity plan including details for first 24 hours of voyage

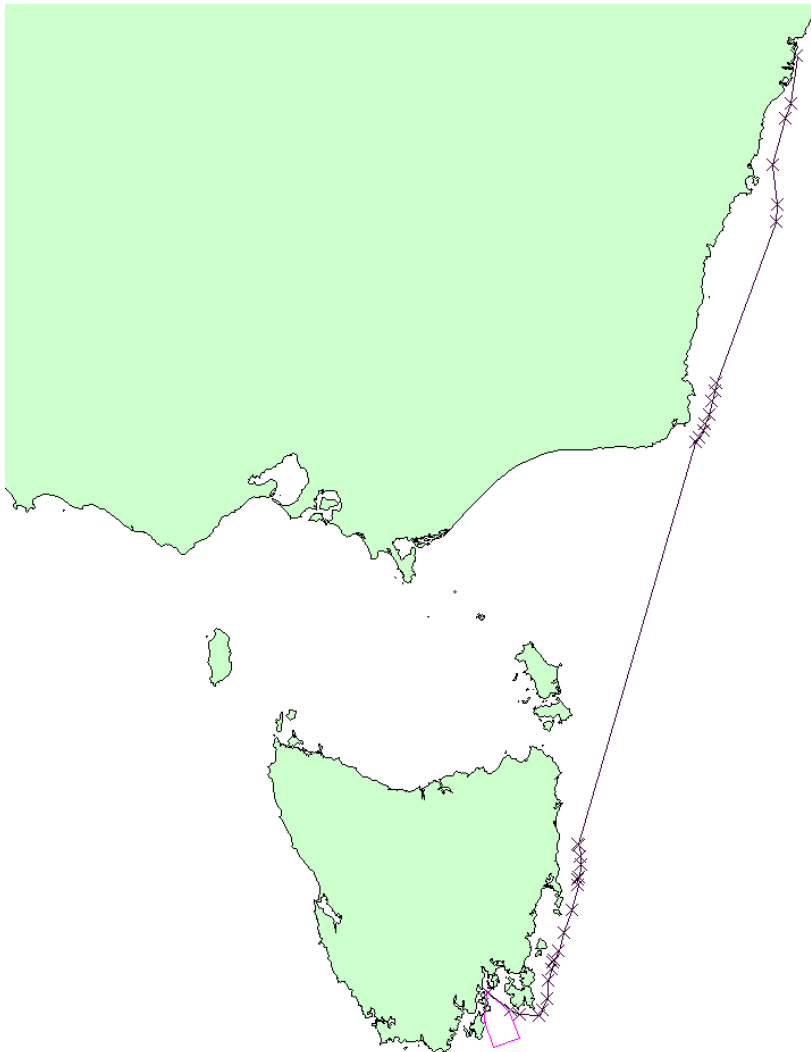
10th -13th May – Opportunistic GSM work to occur throughout voyage.

10th -13th May – Continuous Plankton Recorder (CPR) deployed in Storm Bay and recovered off Sydney.

13th May 2015, 1400 – Sydney pilot boarding ground

13th May 2015, 1500 - vessel scheduled to arrive at Sydney Heads

Voyage track example



Waypoints and stations

Decimal Longitude	Decimal Latitude	Distance (Nm)	Total distance (Nm)	Bearing	Steaming time (10 knots)	Total steaming time
147.4117061	-43.07983459	0.00		0		
147.6955506	-43.23568405	15.57	15.57	127	1.56	1.56
147.8111697	-43.27893933	5.68	21.25	117	0.57	2.13
148.0602357	-43.29031163	10.90	32.15	93	1.09	3.22
148.1008931	-43.23939339	3.53	35.68	30	0.35	3.57
148.1640491	-43.13003896	7.12	42.80	22	0.71	4.28
148.1756129	-42.96694397	9.80	52.60	2	0.98	5.26
148.2183099	-42.86037084	6.66	59.26	16	0.67	5.93
148.240548	-42.797517	3.90	63.15	14	0.39	6.32
148.2565593	-42.77786197	1.37	64.53	30	0.14	6.45
148.3045935	-42.69196136	5.57	70.10	22	0.56	7.01
148.3775342	-42.51651049	11.01	81.10	17	1.10	8.11
148.4753816	-42.30689731	13.30	94.40	19	1.33	9.44
148.5536594	-42.0713991	14.55	108.95	13	1.45	10.90
148.5509909	-42.01702992	3.26	112.21	357	0.33	11.22
148.5687813	-41.98916414	1.85	114.07	25	0.19	11.41
148.5892403	-41.8762485	6.83	120.90	7	0.68	12.09
148.5883507	-41.79775338	4.71	125.61	359	0.47	12.56
148.5678918	-41.69049767	6.50	132.11	351	0.65	13.21
148.558107	-41.679162	0.81	132.92	327	0.08	13.29
150.0554066	-37.73390966	246.53	379.45	16	24.65	37.94
150.0946983	-37.68547163	3.45	382.90	32	0.35	38.29
150.1516037	-37.61652701	4.94	387.84	33	0.49	38.78
150.1746368	-37.54536029	4.41	392.25	14	0.44	39.22
150.220703	-37.46224578	5.45	397.69	23	0.54	39.77
150.2599947	-37.32171094	8.64	406.33	12	0.86	40.63
150.2952218	-37.21125922	6.84	413.16	14	0.68	41.32
150.3169	-37.13319498	4.80	417.96	12	0.48	41.80
151.075	-35.47833333	105.81	523.77	20	10.58	52.38
151.0916667	-35.30166667	10.63	534.40	4	1.06	53.44
151.029852	-34.88260945	25.32	559.72	353	2.53	55.97
151.1899655	-34.39378101	30.37	590.09	15	3.04	59.01
151.2651207	-34.23652583	10.14	600.23	21	1.01	60.02
151.3468113	-33.73568488	30.32	630.54	7	3.03	63.05

Investigator equipment

CPR – To be deployed by Stephen McCullum (Shore contact – Claire Davies 03 6232 5373)

Personnel List

List all scientific participants, their affiliation and role on the voyage

1.	Tegan Sime	Voyage Manager	CSIRO MNF	302 – Voyage Manager
2.	Stephen McCullum	Deputy Voyage Manager	CSIRO MNF	305 – Single scientist 1
3.	Steven Van Graas	DAP Support	CSIRO O&A	113 – Double scientist 2
4.	Ian McRobert	SIT Support	CSIRO O&A	308 – Double scientist 3
5.	Nicole Morgan	SIT Support	CSIRO O&A	112 – Double scientist 1
6.	Tara Martin	GSM Support	CSIRO O&A	311 – Double scientist 6
7.	Toni Moate	Observer	CSIRO FRV	301 – Chief Scientist
8.	Ben Rae	Observer	CSIRO FRV	309 – Double scientist 4
9.	Christine Rees	Hydrochemistry	CSIRO O&A	312 – Double scientist 7

Signature

Your name	Tegan Sime	Title:	Signature:
Date:	29/04/2015	Voyage Manager	