



Australian Government
Bureau of Meteorology

The Centre for Australian Weather and Climate Research
A partnership between CSIRO and the Bureau of Meteorology



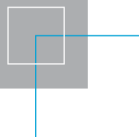
Chemical Transport Model User Manual

Martin Cope and Sunhee Lee

October 2009



www.cawcr.gov.au



[ISBN 978 0 643 09823 7]

Enquiries should be addressed to:
Martin Cope
martin.cope@csiro.au

Copyright and Disclaimer

© 2009 CSIRO To the extent permitted by law, all rights are reserved and no part of this publication covered by copyright may be reproduced or copied in any form or by any means except with the written permission of CSIRO.

Important Disclaimer

CSIRO advises that the information contained in this publication comprises general statements based on scientific research. The reader is advised and needs to be aware that such information may be incomplete or unable to be used in any specific situation. No reliance or actions must therefore be made on that information without seeking prior expert professional, scientific and technical advice. To the extent permitted by law, CSIRO (including its employees and consultants) excludes all liability to any person for any consequences, including but not limited to all losses, damages, costs, expenses and any other compensation, arising directly or indirectly from using this publication (in part or in whole) and any information or material contained in it.

Contents

1.	INTRODUCTION.....	4
2.	CTM STRUCTURE	5
3.	TAPM_GUI.....	8
3.1	Enable CTM option	8
3.2	Pre-processor Input Directory.....	10
3.3	Scenario Name	10
3.4	Select the CTM chemistry.....	11
3.5	Skip the TAPM spin-up days.....	13
3.6	Run the CTM for a subset of TAPM met grids.....	13
3.7	Selecting the CTM Master Grid Domains	14
3.8	Selecting the CTM Inline grid domains	14
3.9	Emission File Format	16
3.10	CIT Emission Files.....	17
3.11	CTM Emission Files.....	18
3.12	Select Inline Grid Emission Input Files	20
3.13	The Number of Vertical Levels	20
3.14	Select CTM run-time options	21
4.	USER INPUT FILES	26
4.1	The initial and boundary concentration file	26
4.2	CIT Format Emission files	27
4.3	CTM Format Emission files	32
5.	DISPLAY FILES	36
6.	TEXT FILES GENERATED BY THE CTM	37
7.	DISPLAY OF DATA IN <i>NETCDF</i>FILES	37
8.	REFERENCES.....	41

List of Figures

Figure 1 The CTM file structure as used in TAPM–CTM for a two–grid system	7
Figure 2 Location of the CTM Pollution option in the TAPM GUI	9
Figure 3 The CTM graphical user interface.....	9
Figure 4 Enabling of the CTM simulation option in TAPM.....	10
Figure 5 Select scenario name (i.e. base or test).....	10
Figure 6 Selection of the CTM chemical transformation mechanism.....	11
Figure 7 Select the number of meteorological spin-up days before the CTM integration commences.....	13
Figure 8 Selector to indicate which TAPM grid nest contains the outermost CTM grid is located.	13
Figure 9 Selection of Master grids (left). Selection of corresponding inline grids (right).	15
Figure 10 Selection of Inline grids	16
Figure 11 Emission file formats	16
Figure 12 CIT Area Emission Files.....	17
Figure 13 Option for selecting emission files for the Master grids.....	18
Figure 14 CTM Area Emission Files.....	19
Figure 15 Option for selecting CTM formatted emission files for the CTM Master grids.....	19
Figure 16 Selection of emission files for the Inline grids.	20
Figure 17 Number and spacing of the vertical CTM levels. The number of vertical levels output to the <i>NetCDF</i> data packets.	21
Figure 18 The CTM run–time options.....	21
Figure 19 Example of the CTM data display system.	38

List of Tables

Table 1 Summary of the chemical mechanisms available for use with the CTM.....	12
Table 2 Listing of the TAPM–CTM run–time options.	22
Table 3 Structure of the initial concentration/boundary concentration file.....	26
Table 4 Structure of a cit_grid_dx.dat file.....	28
Table 5 File structure for a CIT area source emissions file.....	30
Table 6 Structure of a CIT elevated point source file	31
Table 7 Summary of the TAPM emission source groups treated by TAPM–CTM.....	32
Table 8 File structure for a CTM area source emissions file.....	34
Table 9 File structure for a CTM point source emissions file	35
Table 10 Example of line-segment display file	36
Table 11 Example of locality display file.....	36
Table 12 Structure of the ctm archive.cobs file	39
Table 13 Structure of the .csv observational data file.	40

1. INTRODUCTION

This document provides an overview of the steps required to set up a chemical transport simulation using the TAPM–CTM modelling system. The modelling system consists of the TAPM prognostic meteorological model and a chemical transport model (CTM) which CSIRO originally developed for use with the Australian Air Quality Forecasting System. The technical background to the CTM is summarised in Cope et al. (2009) The CTM is run online within the TAPM time marching loop, and thus has the capability of handling frequent updates (i.e. 300 s intervals) to the meteorological fields. This capability provides the potential for more accurate simulation of chemical transport and transformation under rapidly changing meteorological conditions such as sea breeze flows.

By electing to use TAPM–CTM, it is assumed that the user wishes to undertake simulations which require complex chemical transformation and, optionally, an aerosol modelling capability. Such situations may include the modelling of photochemical transformation for scenarios where subtle changes in the speciation of volatile organic compounds are entailed, where secondary aerosol transformation needs to be considered, or where other chemical transformation systems may be important (i.e. the chemistry of background air or the chemical cycle of a persistent pollutant such as mercury). In these situations it is appropriate to use TAPM–CTM; otherwise it is recommended to TAPM be used. Note that running TAPM–CTM with a complex chemical transformation scheme will cause typical TAPM run times to increase by a factor of 2–5. This is a consequence of transporting many more chemical species and the need to solve a ‘stiff’ system of differential equations describing the chemical transformation rates.

TAPM–CTM is configured for both episodic and longer term modelling (which could involve simulating a period of weeks to years). Note that TAPM–CTM was originally configured to provide an alternative to the TAPM and CIT (Carnegie-Mellon, California Institute of Technology airshed model; Harley et al., 1993) modelling system which was used by some of the Australian environmental protection authorities. As such, the system was designed to use the CIT format concentration boundary conditions and emission inventory files, with only a minimal amount of modification (see Section 4). However, the model has since been modified to input a superset of the TAPM-type emission formats (i.e. see Hurley 2008a) and thus provides additional flexibility in the treatment of the emissions. Replacement of CIT by TAPM–CTM provides the ability to model multi-scale problems (using nested grids), and to

easily inter-change the chemical mechanism. The online configuration of the CTM provides the advantage of more frequent updates of the meteorological data and improved transport modelling.

This manual assumes that the user is already familiar with the technical background and operation of TAPM, and has thoroughly reviewed the steps required to set up a TAPM simulation using the TAPM graphical user interface. The following sections describe the CTM file structure, and the process for setting up the CTM component of a TAPM run.

2. CTM STRUCTURE

The file structure of the CTM component of TAPM-CTM is shown in Figure 1. In this example, a two-level nested grid system is considered. Each of the CTM grids must have a corresponding TAPM grid of the same resolution. For example, if the CTM grids are to have a horizontal spacing of 3 km and 1 km respectively, TAPM must be configured to run two grids of the same spacing (plus additional grids of lower resolution if required for modelling larger scale meteorological processes).

For the 2-grid system shown in Figure 1, boundary conditions for the outer CTM grid are prescribed from a user-generated input file. Boundary conditions for the inner CTM grid are interpolated from the outer CTM grid during run time. When used in this configuration, the CTM grids are defined as *Master* grids. A *Master* grid has the same grid spacing as the corresponding TAPM grid. As will be shown below, the GUI allows one *Master* grid to be defined per TAPM grid.

The TAPM-CTM system also allows the use of *Inline* grids. One or more *Inline* grids may exist within a given *Master* grid. An *Inline* grid will usually be of higher resolution (usually 1/2 to 1/3 the grid spacing of the *Master* grid), and will use interpolated TAPM meteorology. An *Inline* grid is integrated at the same time as the *Master* grid and receives boundary concentrations from the *Master* grid every time step.

An *Inline* grid is used when the chemical transport calculations need to be undertaken on a smaller grid spacing than is available from the TAPM meteorological simulation. For example, TAPM may be used to generate meteorological fields on grids with horizontal spacing of 9 km and 3 km respectively. The CTM is also integrated on 9 and 3 km spaced *Master* grids. Let's assume that it is also necessary to compute chemical-transport on a grid of 1 km spacing. In this

case, the 1 km spaced grid would be defined as an *Inline* grid to the 3 km CTM *Master* grid and would use interpolated meteorological data from the 3 km TAPM grid.

Central to the CTM operation is the concept of a data packet. This is a *NetCDF*¹ file which contains all of the input and output fields of the CTM for a 24 h period for a single grid. A separate *NetCDF* file is generated for each grid and for each 24 h period of the simulation. The *NetCDF* file system is used because its format is independent of the underlying operating system.

In the example shown in Figure 1, the two CTM grids are set up using the TAPM GUI as discussed in the next section. The GUI is also used to identify the names of CIT-formatted emissions files, and initial and boundary concentration files. Text-based locality and line segment display files are also used for plotting simple maps over the concentration predictions after the simulation has been completed.

Following the process of grid configuration and file selection, the GUI triggers a CTM pre-processor which creates the *NetCDF* data packets, interpolates and loads in the emission data, generates a text-based configuration file (one per grid), and generates a generic photolysis reaction file for use by the chemical transformation mechanism. The TAPM-CTM system is then executed, with the TAPM predicted meteorological fields being passed to TAPM-CTM every 300 s, where they are interpolated onto the CTM grid and used to drive the transport-chemical-transformation processes.

Once a simulation has been completed, CTM results may be viewed using a GUI-driven display system (CTM-DDS). The operation of this system is discussed in the CTM-DDS online user manual and is also summarised in Section 7.

¹ *NetCDF* is a network independent common data format which is widely used for storing a wide range of scientific data (<http://www.unidata.ucar.edu/software/netcdf/>).

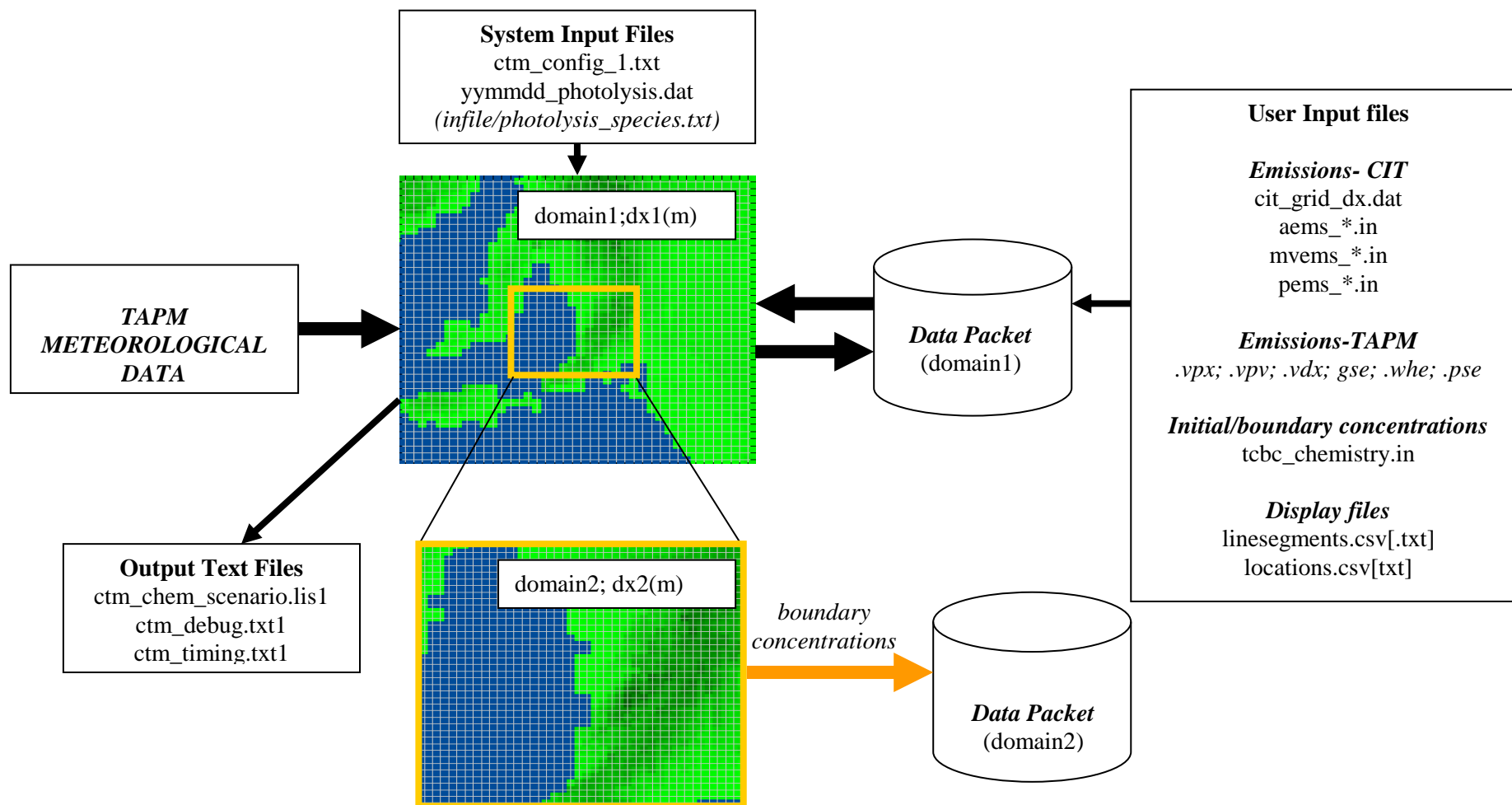


Figure 1 The CTM file structure as used in TAPM-CTM for a two-grid system

3. TAPM_GUI

The process of setting up a TAPM–CTM simulation is similar to that used to set up a conventional TAPM pollution simulation.

Set up a TAPM meteorological simulation using the TAPM GUI to prescribe the meteorological grids, the integration period and the surface and meteorological boundary conditions. When doing this, care must be taken to prescribe a grid system which will encompass the CTM grids. Similarly, the vertical extent of the TAPM domain must encompass the vertical extent of the CTM domain. It is also necessary to ensure that the TAPM meteorological simulation encompasses the length of the CTM simulation. Note that one or more spin-up days of meteorological–only modelling may be prescribed if necessary. Similarly it is possible to skip one or more outer grids of a nested TAPM grid system before the outermost CTM grid is defined, thus reserving one or more of the lower resolution grids for meteorological modelling. The procedure for setting up a TAPM simulation is described in the TAPM user manual (Hurley, 2008a).

If the CTM software has been installed (check for the presence of a CTM directory under the TAPM root directory to confirm this), then the *Optional Input* menu will include the **CTM Pollution** option (Figure 2). Selection of this option will bring up the **CTM pollution** menu (see Figure 3). This menu provides an interface for selecting the chemical mechanism, the number and dimensions of a nested grid system, the vertical model domain, CIT-formatted emission inventory files and some output options.

3.1 Enable CTM option

In order to run the CTM chemistry in the place of the TAPM pollution module, ensure that the **CTM pollution** from Optional Input Box is selected as shown in Figure 4 (left).

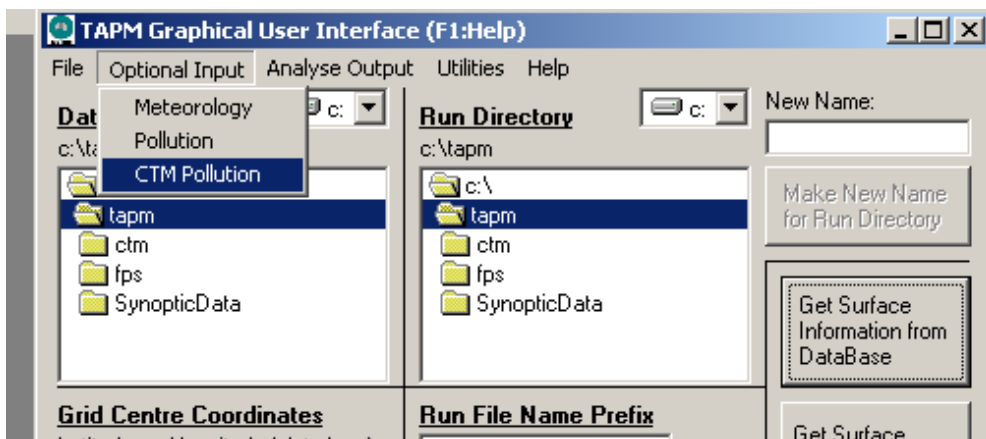


Figure 2 Location of the CTM Pollution option in the TAPM GUI

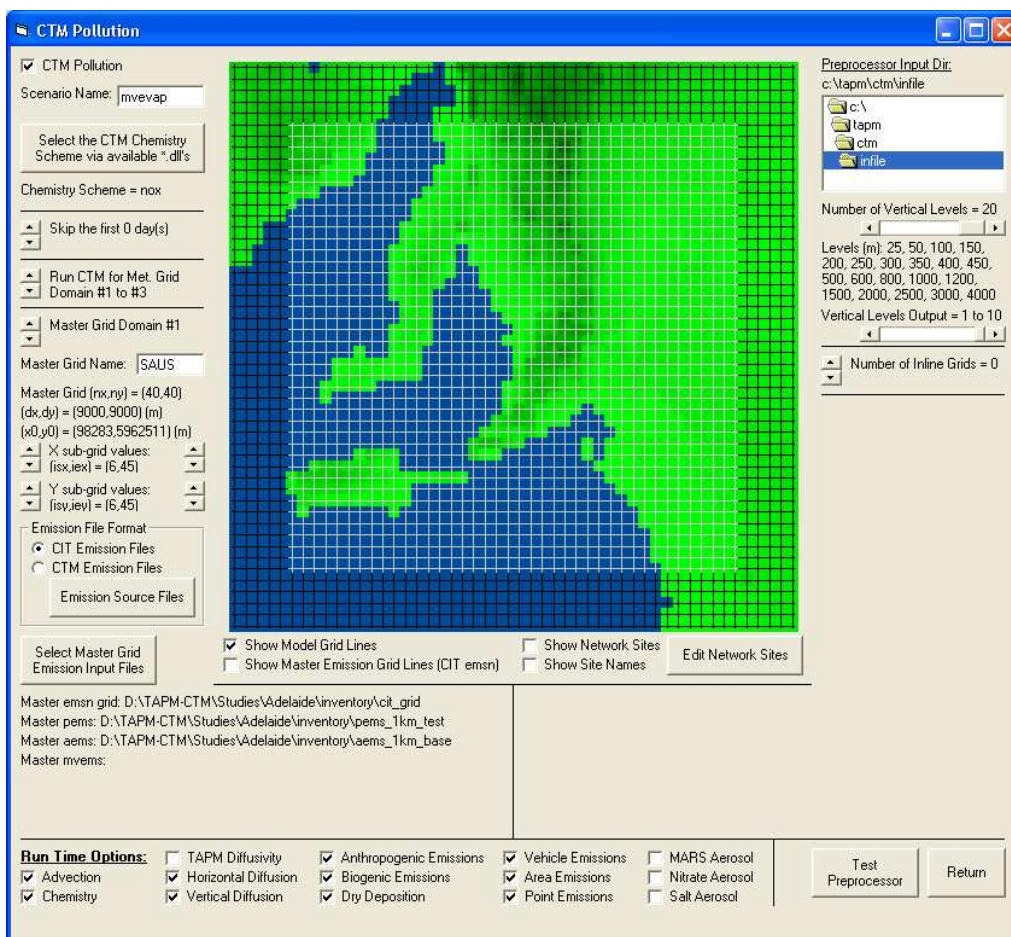


Figure 3 The CTM graphical user interface.

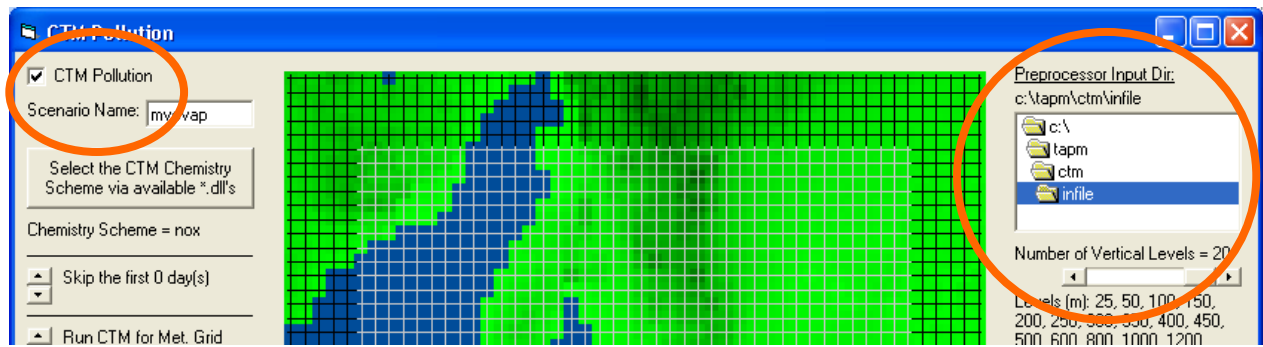


Figure 4 Enabling of the CTM simulation option in TAPM

3.2 Pre-processor Input Directory

The CTM pre-processor generates CTM control files and *NetCDF* data packets. The **Pre-processor Input Directory** (Figure 4- right) contains domain independent files (i.e. such as the data base files from which photolysis rates are calculated) which are accessed by the CTM pre-processor. An *infile* directory will be set up at installation time.

3.3 Scenario Name

Fill in the scenario name box with a unique name up to 10 characters to identify a particular run.

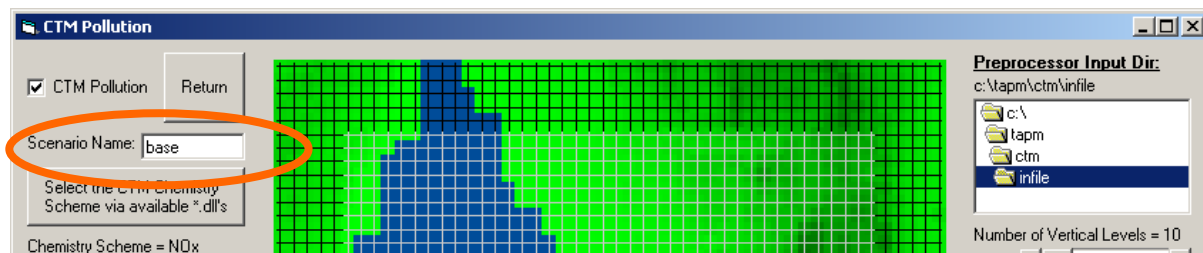


Figure 5 Select scenario name (i.e. base or test)

3.4 Select the CTM chemistry

The CTM chemistry is linked to the TAPM–CTM system at run time via a dynamic link library file. This approach allows chemical mechanisms to be interchanged without having to recompile the TAPM–CTM system.

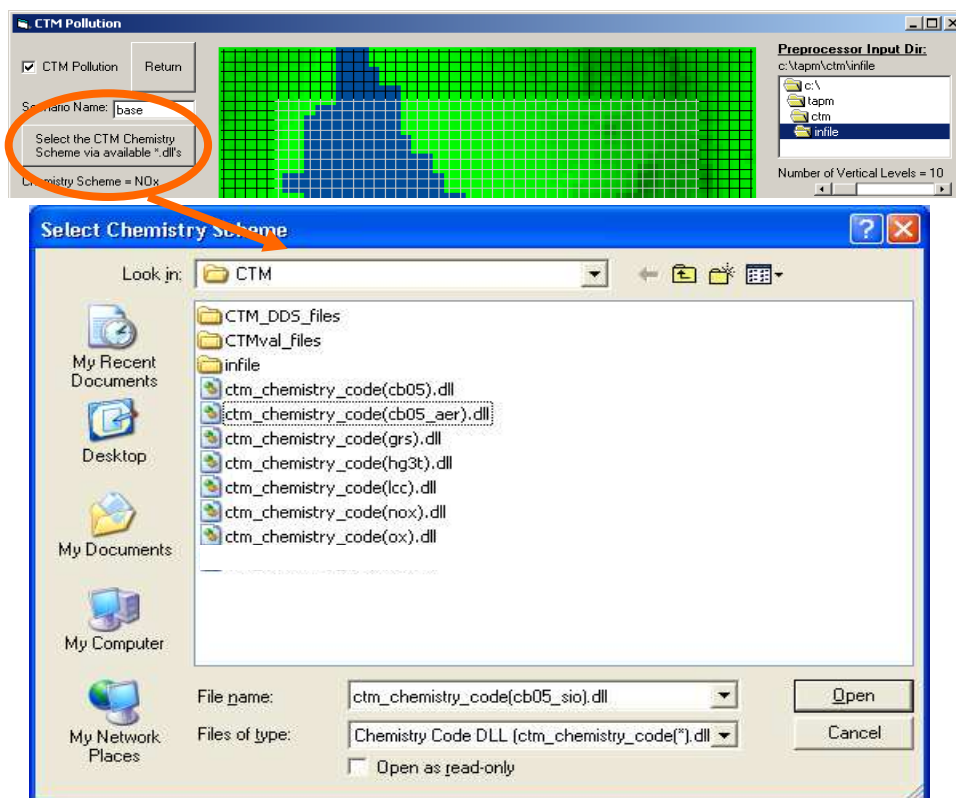


Figure 6 Selection of the CTM chemical transformation mechanism

Click on the *Select the CTM chemistry* box to view and select the appropriate chemistry. This is illustrated in Figure 6 where it can be seen that eight different mechanisms are available for use ranging from a simple NO_x tracer scheme to a Carbon Bond scheme with extensions for aerosol chemistry. Table 1 provides a summary of the mechanisms available with the current version of TAPM–CTM.

Table 1 Summary of the chemical mechanisms available for use with the CTM

Name	Mechanism	Description
NOX	NO, NO ₂	Simple two species tracer mechanism used for testing and training. Links to an urban photochemical precursor inventory.
OX	NO, NO ₂ , O ₃	Models the photochemical steady-state system. Used for testing and training. Links to an urban photochemical precursor inventory
HG3t	Three species mercury tracer mechanism	Models the transport and deposition of elemental, bi-valent and particulate mercury. No chemical reactions
GRS	Generic Reaction Set (Azzi et al. 1992)	Highly condensed photochemical transformation mechanism. Using for training and screening-level urban ozone modelling. Links to an urban photochemical precursor inventory however requires a correctly defined reactivity-weighted volatile organic compound (VOC) species.
LCC	Lurmann, Carter, Coyner mechanism (Lurmann et al. 1987)	Lumped species photochemical smog mechanism which has seen wide use in Australia and the U.S. Links to an urban and regional photochemical precursor inventory however requires correctly speciated VOC emissions.
CB05	Carbon Bond 2005 (Yarwood et al. 2005)	Lumped and structure photochemical smog mechanism which as recently been implemented into U.S models and the CTM. Links to urban and regional photochemical precursor inventories however requires correctly speciated VOC emissions.
CB05_AER	Carbon Bond 2005 + aerosol species	The version of the mechanism contains addition species and reactions for modelling the primary and secondary production of PM2.5

Note that a chemical mechanism must be selected with care, as the species in the selected chemical mechanism; in the initial/boundary concentration file; and in the emissions inventory files must match a name and case in order for the CTM to process the data. In this regard, the chemical mechanism species list is defined as the **Master Species List** and thus one or more of the species in the initial condition and emissions files must match a species in this list. Appendix A of Cope et al. (2009) provides the **Master Species List** for the mechanisms shown Table 1.

3.5 Skip the TAPM spin-up days

This selector is used to indicate how many days of the meteorological simulation are skipped before the CTM begins its integration cycle (Figure 7). For example, if TAPM is integrated for 3 days and the CTM is to be run for the second and third days, the selector should be set to indicate that one day is skipped. No days are skipped in the example given in Figure 7.

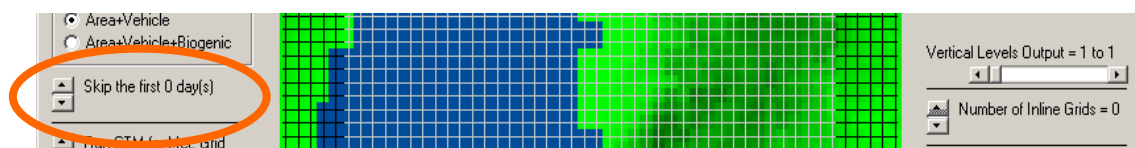


Figure 7 Select the number of meteorological spin-up days before the CTM integration commences

3.6 Run the CTM for a subset of TAPM met grids

This selector (Figure 8) is used to identify the TAPM grids on which CTM grids are located. For example, assume that TAPM is configured with three grids with horizontal spacing of 9 km, 3 km and 1 km. These grids are sequentially numbered from 1 to 3 (with 1 corresponding to the outermost TAPM grid). If the CTM is to be run for all three resolutions, this selector will be set to run the CTM from the TAPM grid 1 to grid 3. If however, it is not considered necessary to run the CTM on the 9 km grid (i.e. this grid is used to simulate the larger-scale meteorological flows only) the selector would be set to run the CTM for TAPM grid 2 to 3. Note that the inner-most CTM grid is always run on the inner most TAPM domain. Thus the selector can only be used to define the TAPM grid which contains the first grid of the CTM domain.

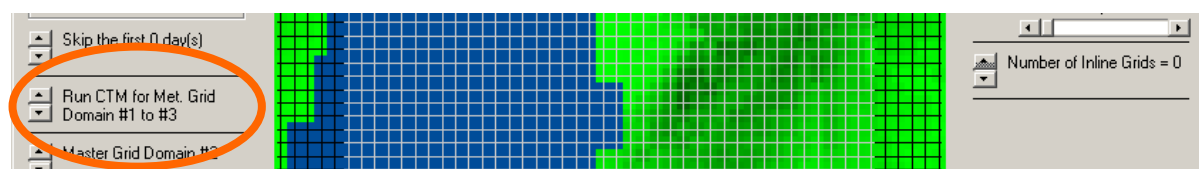


Figure 8 Selector to indicate which TAPM grid nest contains the outermost CTM grid is located.

3.7 Selecting the CTM Master Grid Domains

As discussed previously, the CTM grids are divided into *Master* and *Inline* grids. A *Master* grid is driven by the meteorological output from a TAPM grid of the same horizontal grid spacing. A *Master* grid receives its boundary concentrations from a lower resolution run (i.e. an outer nest) or from a user defined, time invariant boundary concentration file (if the *Master* is the outer-most grid nest).

One *Master* grid is defined for each TAPM meteorological grid as described in Section 3.6.

One or more *Inline* grids may exist within a given *Master* grid domain. An *Inline* grid will usually be of higher resolution (usually 1/2 to 1/3 the grid spacing of the master grid), and will use interpolated TAPM meteorology. An *Inline* grid is integrated at the same time as the Master grid and receives boundary concentrations from the *Master* grid every time step. Use of the GUI to define an *Inline* grid is discussed shortly.

The menu selection circled in Figure 9 is used to define the *Master* grids. The *Master* grids are numbered sequentially, starting at 1 for the outer most CTM grid. The *Master Grid Domain #* selector is used to select each CTM grid.

Each *Master* grid has a unique name as prescribed in the *Master Grid Name* box. The location of a CTM *Master* grid relative to the associated TAPM grid is defined next, using selectors which define where the CTM grid starts and ends in TAPM grid units.

Guidance as to the location of the CTM grid relative to the TAPM grid can be found by viewing the TAPM and CTM grids in the centre graphic of the CTM Pollution menu (the CTM grid can be overlaid by checking the *Show Master Grid Lines* box underneath the graphic).

Note that a *Master* grid is not required to be centred within the corresponding TAPM grid.

3.8 Selecting the CTM Inline grid domains

The boxed area on the right hand side of contains a slide button which can be used to prescribe the number of *Inline* grids. For the example shown in Figure 9, the number of inline grids has been set to zero. However, if the number of *Inline* grids is set to one or more then the *Inline* grid menu system is displayed (see Figure 10). The *Inline Grid Domain* is initially set to *off*, however, the slider button can be used to select up to five *Inline* grids per *Master* grid.

The **Inline Grid Name** box is used to define a unique name for each **Inline** grid. The **Inline Grid (nx,ny)** slider buttons are used to define the number of east-west and north-south grid points. The **(dx, dy)** slider button is used to define the horizontal grid spacing, while the **(x0, y0)** define the position of the first (1, 1) grid point which is located at the south-west corner of the grid.

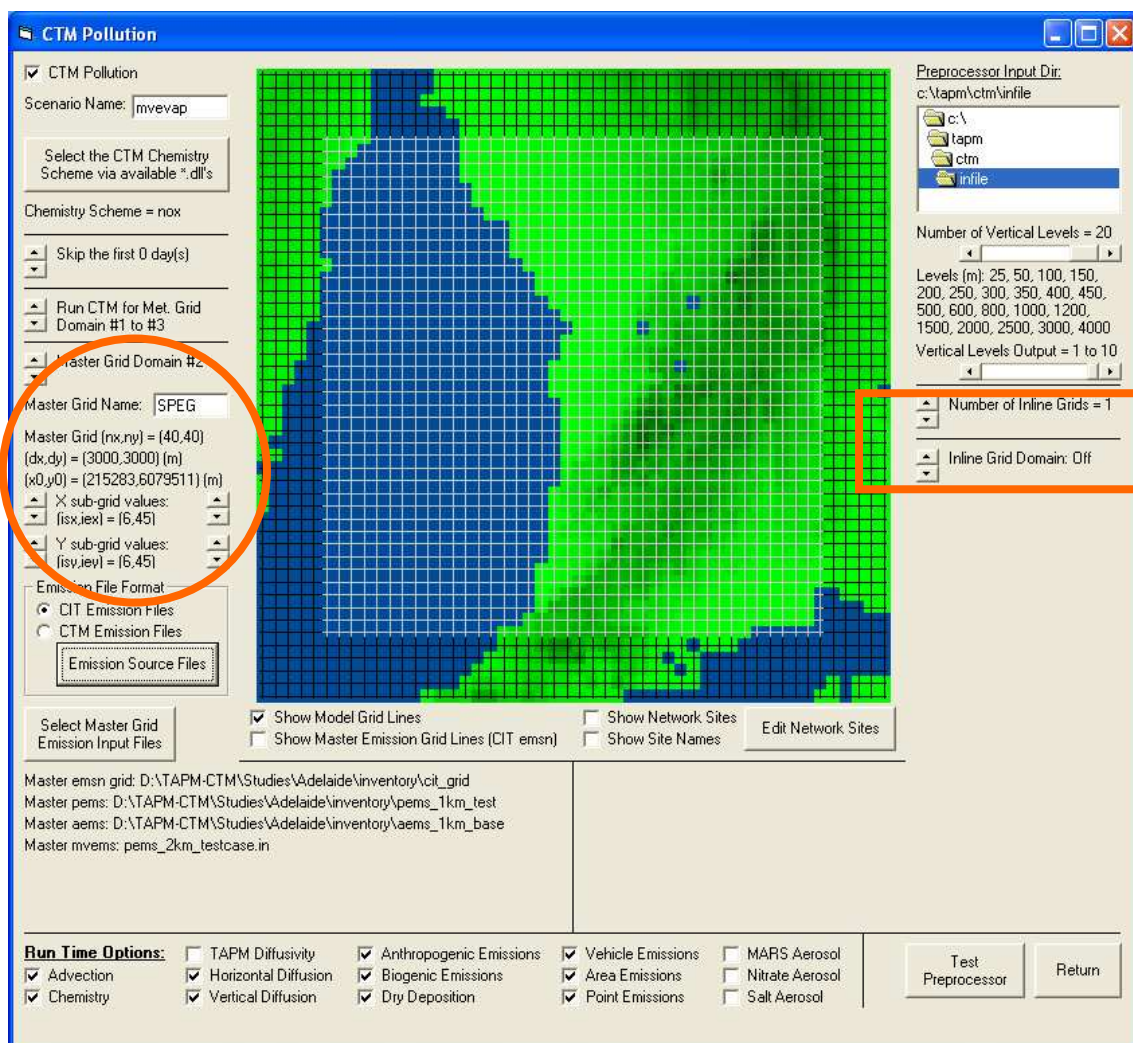


Figure 9 Selection of Master grids (left). Selection of corresponding inline grids (right).

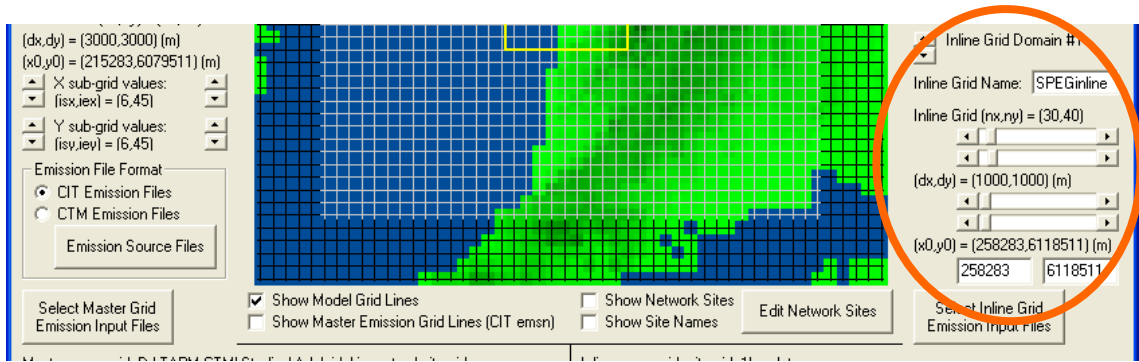


Figure 10 Selection of Inline grids

3.9 Emission File Format

The CTM pre-processor requires information about the format and number of emission files which will be loaded into the NetCDF data packets. The files formats are selected using the radio buttons outlined in Figure 11 and consist of a modified version of the CIT model area source file format (McRae et al. 1992) or a modified version of the TAPM emission file formats (Hurley 2008a). A detailed description of these formats is given in section 4.2.

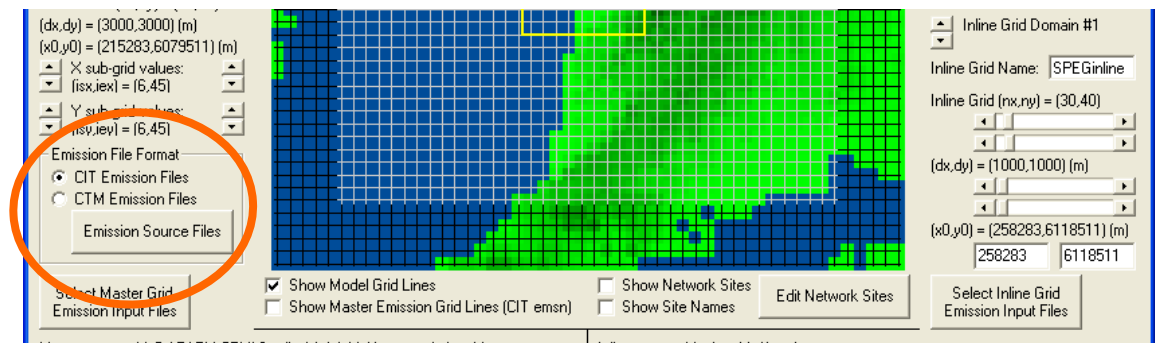


Figure 11 Emission file formats

Once the file format has been selected, the Emission Source Files button is clicked to select the number and type of CIT or CTM emissions files which will be processed.

3.10 CIT Emission Files

Figure 12 shows the menu which pops up when the CIT emission file format is selected. This menu is used to indicate whether the CIT area source emissions file (see Section 4 for further discussion of this file) contains data for commercial/domestic emissions only, for commercial/domestic and motor vehicle emissions, or for commercial/domestic, motor vehicle and biogenic emissions (the CIT default).

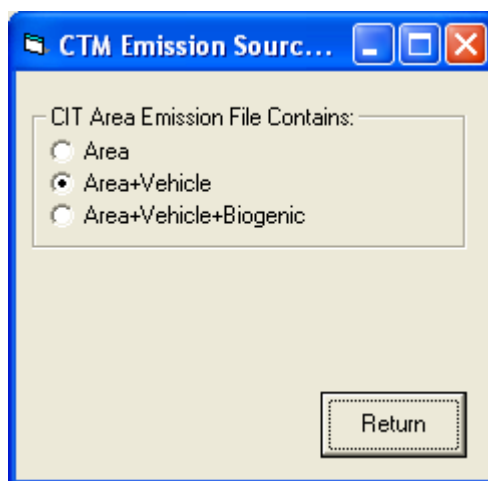


Figure 12 CIT Area Emission Files

If the radio button for *Area* is selected, then the user will be required to input separate files for commercial/domestic emissions (an *aems* file) and for motor vehicle emissions (*mvems* file). If the option for *Area+Vehicle* is selected then it is assumed that both of these source groups are included in the CIT *aems* file. As a consequence, a separate motor vehicle emissions file will not be required. Selection of either of these options indicates that biogenic emissions will be calculated online in the CTM. However selection of the *Area+Vehicle+Biogenic* option indicates that biogenic emissions are also included in the CIT *aems* file and thus biogenic emissions will not be calculated online.

Note that it is important to ensure that the *Area Emission File Contain* option is selected before the emissions are entered (*Select Master Grid Emission Input Files*).

Note too that the user will also be requested to input the name of a CIT *pems* (elevated industrial point source) file as described shortly. The provision of at least one CIT emission file is mandatory as the TAPM-CTM pre-processor requires an emission species list in order to set up data file structures in the NetCDF data packets.

The emission files for each *Master* grid are selected by clicking on the *Select Master Grid Emission Input File* button (Figure 13). When selected, a series of file selection windows are displayed, which are then used to select the CIT format emission files.

Note that these files are used only for the current Master Grid domain. The cycle of emission file selection must be completed for each Master Grid domain defined for the current CTM grid configuration. This is done because the user may want to select different emission file resolutions and spatial extents for each Master Grid domain.

The user is first asked to input a CIT format geographical definition file (*cit_grid_#km.dat*), and CIT format point source emission files (see Section 4). Following this, and depending upon the contents of the CIT *aems* file as discussed above, file selection windows will be opened for entering the names of the commercial/domestic and motor vehicle emission files.

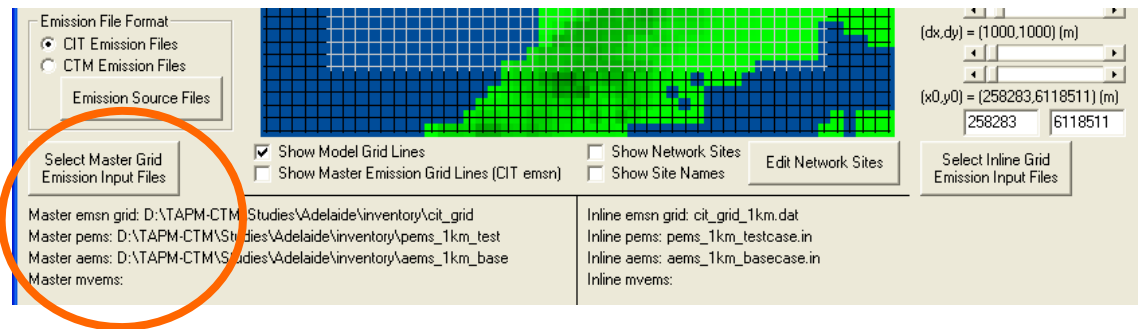


Figure 13 Option for selecting emission files for the Master grids

The region covered by a particular CIT emission file can be overlaid on the model grid by checking the *Show Master Emission Grid Lines* check box. The names of the selected files are listed below the *Select Master Grid* command button.

3.11 CTM Emission Files

Figure 14 shows the menu which pops up when the CTM emission file format is selected and the Emission Source Files button is clicked. It can be seen that there are seven individual source types which can be selected as described in Section 4.3. Note that TAPM-CTM requires the selection of a least one source group.

The emission files for each *Master* grid are selected by clicking on the *Select Master Grid Emission Input Files* command button (Figure 15). When clicked, a series of file selection windows are displayed, which are used to select the CTM format emission files.

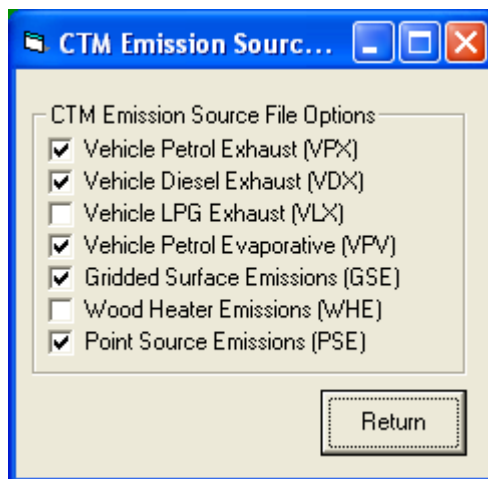


Figure 14 CTM Area Emission Files

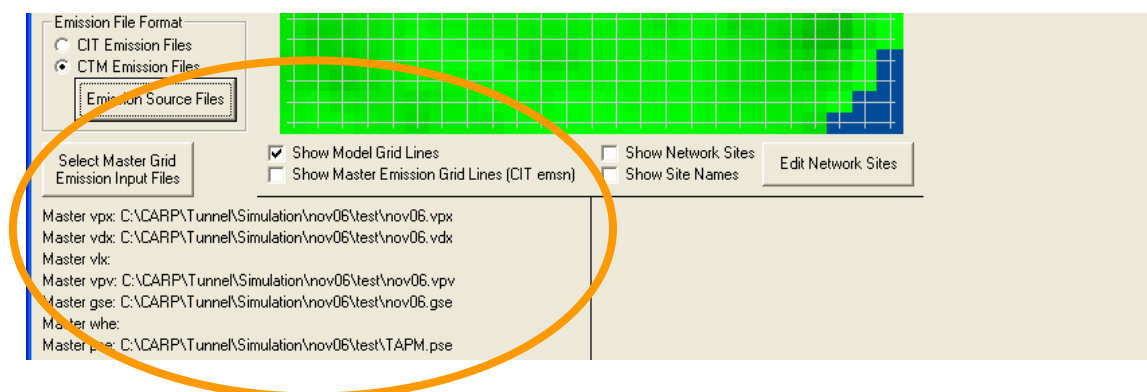


Figure 15 Option for selecting CTM formatted emission files for the CTM Master grids.

Note that these files will be used only for the current Master Grid domain. The cycle of emission file selection must be completed for each Master Grid domain defined for the current CTM nested grid configuration. This is done because the user may want to select different emission file resolutions and spatial extents for each Master Grid domain.

3.12 Select Inline Grid Emission Input Files

Emission files for the *Inline* grids are selected using the *Select Inline Grid Emission* command button located on the bottom right hand side of the CTM Pollution menu (e.g. see Figure 16). The selection procedure is identical to that discussed previously for the Master grids.

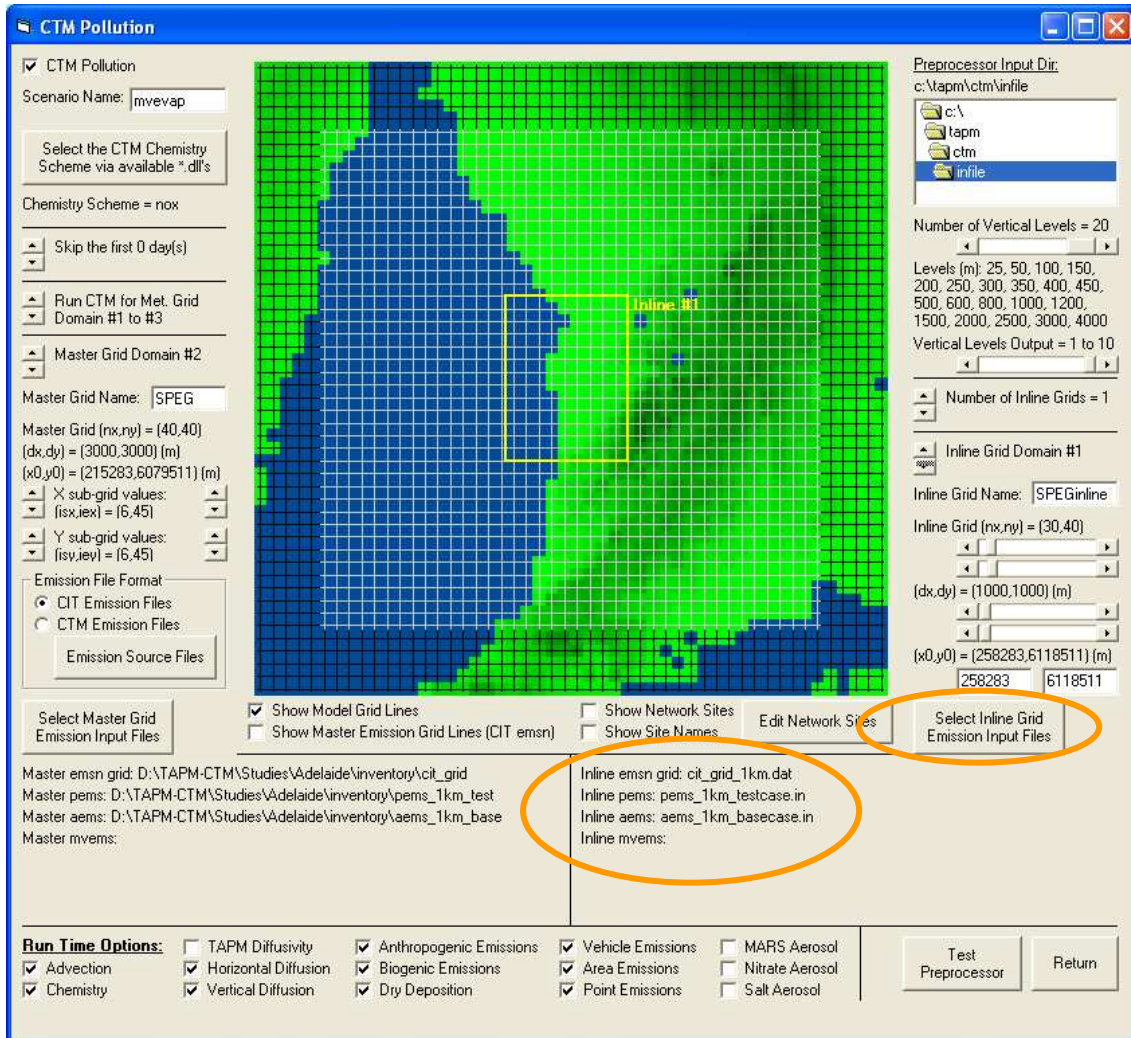


Figure 16 Selection of emission files for the Inline grids.

3.13 The Number of Vertical Levels

This slider button (Figure 17) is used to specify the number of vertical levels in the CTM master grids. Note that the same vertical structure is used in all of the grids.

The default number of levels are 10 (0-2000 m), 12 (0-3000 m), 15 (0-4000 m) and 20 (0-4000 m; higher resolution).

Also contained within this section of the *CTM Pollution* menu is a slider switch (*Vertical Levels Output*) which specifies the number of vertical levels which are written out to the CTM data packets. The number of output levels can vary between 1 and the number of vertical levels as prescribed by the *Number of Vertical Levels* slider button.

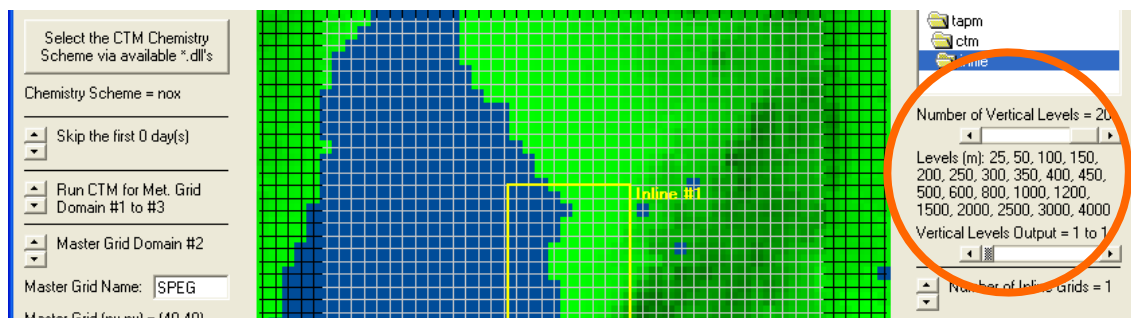


Figure 17 Number and spacing of the vertical CTM levels. The number of vertical levels output to the *NetCDF* data packets.

3.14 Select CTM run-time options

Listed at the bottom of the CTM GUI (see Figure 18) are subsets of the options which are processed by the CTM at run time. These options are used to enable/disable various processes in the model including advection, chemical transformation, dry deposition and the use of various aerosol simulation modules.

A complete list of the available options is given in Table 2. Note that it is possible to add additional options outside of the GUI by modifying the *ctm_config_#.txt* configuration files.

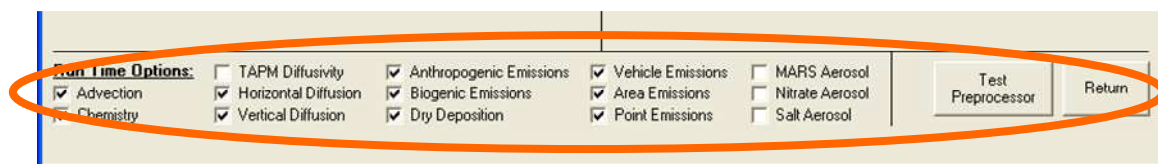


Figure 18 The CTM run-time options.

Table 2 Listing of the TAPM-CTM run-time options.

Option	Definition	GUI ¹
<i>Transport Calculations</i>		
Advection/noAdvection	Enable (default)/disable the calculation of 3-d pollutant transport	y
Hdiffusion/noHdiffusion	Enable (default)/disable the calculation of horizontal diffusion	y
Vdiffusion/noVdiffusion	Enable (default)/disable the calculation of vertical diffusion calculations	y
Lockstep/noLockstep	Maximum time step for chemical transformation and diffusion is limited by the minimum advection time step (default)	n
NWPdiffusivity/noNWPdiffusivity ²	Enable(default)/disable the use of TAPM diffusivity fields for sub-grid-scale turbulent transport calculations	n
<i>Chemical Transformation And Aerosol Processes</i>		
Chemistry/noChemistry	Enable(default)/disable the coupled calculation of chemical transformation and vertical diffusion	y
Nitrate/noNitrate ²	Enable/disable(default) the calculation of gas-phase ammonium nitrate production.	y
Mars/noMars ²	Enable/disable(default) the calculation of gas-phase ammonium nitrate and sulfate production.	y
CloudChemistry/noCloudChemistry ²	Enable/disable(default) the calculation of sulfate production in cloud water	n
DryDeposition/noDryDeposition	Enable(default)/disable the dry deposition calculations	y

Biogenic And Natural Emissions		
Biogenic/noBiogenic	Enable (default)/disable the calculation of natural and biogenic emission rates using online emissions module	y
Trees/noTrees	Enable(default)/disable the calculation of emissions from trees when calculating total biogenic emissions	n
Grass/noGrass	Enable(default)/disable the calculation of emissions from grass when calculating biogenic emissions	n
userBiogenic [UserBiogenic_def.txt]	Provide user defined biogenic emission rates and land-use mappings in the file UserBiogenic_def.txt	n
biogenicLAI [canopyLAI_x.txt, grassLAI_x.txt]	Provide user defined leaf area index for trees and grasses in the user-provided files.	n
SeaSalt/noSeaSalt ²	Enable/disable(default) the calculate of sea salt aerosol emissions	n
Fire/noFire ²	Enable/disable(default) emissions from fire sources	n
Dust/noDust ²	Enable/disable(default) emissions from wind-blown dust sources	n
Anthropogenic Emissions		
Anthropogenic/noAnthropogenic	Enable(default)/disable emissions from anthropogenic sources	y
Motor_vehicle/noMotor_vehicle	Enable(default)/disable emissions from motor vehicle sources	n
Com_dom/noCom_dom	Enable(default)/disable emissions from commercial/domestic sources	n
Industrial/noIndustrial	Enable(default)/disable emissions from elevated point sources	n
StacktipDownWash/noStacktipDownWash	Enable(default)/disable the calculation of reduced effective stack height due to plume downwash in the lee of stacks	n
PlumeSmear/noPlumeSmear	Enable(default)/disable the calculation of vertical plume spread due to internal turbulence in point source plumes	n
BriggsPlumeRise/noBriggsPlumeRise	Enable/disable(default) the use of Briggs analytic plume rise equations instead of calculations based on the numerical integration of the governing differential equations	n

Emission Scaling		
Scale_motor_vehicles [NOx_fac, ROC_fac, PM_fac]	Scale motor vehicle emissions of NO _x (NOx_fac), ROCs and CO (ROC_fac), and aerosols (PM_fac) by the user defined fractional scale factors (default- all scale factors = 1.0)	n
Scale_commercial_domestic [NOx_fac, ROC_fac, PM_fac]	Scale commercial/domestic emissions of NO _x (NOx_fac), ROCs and CO (ROC_fac), and aerosols (PM_fac) by the user defined fractional scale factors (default- all scale factors = 1.0)	n
Scale_fire [NOx_fac, ROC_fac, PM_fac]	Scale fire emissions of NO _x (NOx_fac), ROCs and CO (ROC_fac), and aerosols (PM_fac) by the user defined fractional scale factors (default- all scale factors = 1.0)	n
Scale_natural_biogenic [NOx_fac, ROC_fac, PM_fac]	Scale biogenic emissions of NO _x (NOx_fac), ROCs (ROC_fac), and aerosols (PM_fac) by the user defined fractional scale factors (default- all scale factors = 1.0)	n
Legacy Cit Options		
SeaBreezeCap [start_hr, end_hr start_wd, end_wd min_mr, max_pbl]	Restrict the maximum mixing depth within a sea breeze (defined as existing between hours start_hr, end_hr, and having a wind direction between start_wd, end_wd; having a minimum mixing ratio (ppTH) of min_mr. The maximum mixing depth is given by max_pbl)	n
VdiffCIT/noVdiffCIT	Enable/disable(default) the use of the CIT vertical diffusion algorithm (for backwards compatibility)	n
pblCIT/nopblCIT	Enable/disable(default) the use of the CIT diagnostic mixing depth scheme for calculating the PBL	n
SurfaceMet/noSurfaceMet	Enable/disable(default) the use of layer-1 temperature and humidity to calculate chemical transformation rate coefficients in all model levels (CIT default)	n
Miscellaneous Options		
Warm_start/noWarm_start ²	Enable/disable(default) warm start using previous model run for initial concentrations	n
Nest/noNest	Enable(default)/disable the use of one-way nesting	n
Write_warm_start/noWrite_warm_start	Enable/disable(default) the writing of warm start data	n

Met_interpolate/noMet_interpolate	Enable/disable(default) the temporal interpolation of meteorological data	n
Vector/noVector	Enable/disable(default) the use of code optimised for vector computers	n

¹y=available from the GUI; n=available through modification to the ctm_config.txt files

²These are currently research options only and thus may not be available with the release version of TAPM-CTM. Please contact martin.cope@csiro.au or sunhee.lee@csiro.au for further information regarding these options.

4. USER INPUT FILES

The user will need to provide three sets of input files: (a) an initial and boundary concentration file, (b) emission files, and (c) plot display files.

4.1 The initial and boundary concentration file

This file contains initial concentrations and 2-dimensional boundary time invariant concentrations for chemical species used in a particular run. The generic file name is *'tcbc_chemistry.in'*. The example shown below is a file called *'tcbc_grs.in'* which is used for a Victoria grid domain and a GRS chemistry scheme. The vertical initial concentration records are used to initialise all CTM grids, and the boundary data provide boundary concentrations for the outer-most *Master* grid. The format should be as shown in Table 3. Explanatory notes are given in brackets (and should not be included in the actual file).

Table 3 Structure of the initial concentration/boundary concentration file

<p>Header record VERTICAL INITIAL CONDITIONS (This line must start with VERT) CO 65.00 65.00 65.00 65.00 65.00 (CO in ppb for 5 vertical levels. Concentrations above level 5 use the last defined level) SO2 1.00 1.00 1.00 1.00 0.10 (SO2 in ppb) PM8 1.00 1.00 1.00 1.00 0.10 (PM8 in ug/m³) * (This line must be included to indicate the end of the vertical concentration records) BOUNDARY CONDITIONS (This line must start with BOUN) CO NORT 65.00 65.00 65.00 65.00 65.00 (CO in ppb for all vertical levels on the Northern boundary) CO EAST 65.00 65.00 65.00 65.00 65.00 CO SOUT 65.00 65.00 65.00 65.00 65.00 CO WEST 65.00 65.00 65.00 65.00 65.00 PM8 NORT 1.00 1.00 1.00 1.00 1.00 PM8 EAST 1.00 1.00 1.00 1.00 1.00 PM8 SOUT 1.00 1.00 1.00 1.00 1.00 PM8 WEST 1.00 1.00 1.00 1.00 1.00</p>

The number of species defined in the *tbc_chemistry.in* file is arbitrary. Each species name is four characters long and must match a species name as defined in the selected chemical mechanism (the **Master Species List**). Species names are case sensitive. Species whose names don't match will be ignored. The concentrations of undefined species will be set to a small but non-zero value. The number of species defined in the vertical initial conditions records does not have to match the number of species defined in the boundary conditions records.

The number of levels defined in the *tbc_chemistry.in* file is arbitrary but must be the same for all initial and boundary concentration records. If the number of levels defined in the *tbc_chemistry.in* file is less than the number of TAPM-CTM levels, the last level defined in the *tbc_chemistry.in* file will be applied to the remainder of the TAPM-CTM levels.

The vertical initial concentrations are written with one line for each chemical species. The boundary concentrations are written on one line for each direction for each species. Each direction code has 4 characters, is case sensitive and is defined as one of 'NORT', 'SOUT', 'EAST' or 'WEST'. If a direction is not prescribed for a particular species or the direction code is not recognised, then the boundary concentration for that direction and species will be set to a small but non-zero value. Concentrations can be written in integer or real formats (including the use of exponents i.e. 1.0E-05).

4.2 CIT Format Emission files

This set of user data consists of the following- a file for specifying emission grid information, and files which contain hourly gridded emissions for commercial/domestic sources, motor vehicle sources and industrial point sources. Note that it is necessary to provide at least one CIT emission file as the TAPM-CTM pre-processor requires information regarding emission species for setting up storage structures in the *NetCDF* data packets. The emissions are defined in local standard time.

The grid information generic file name is *cit_grid_dx.dat*. *dx* stands for resolution of the emission files in km, for example, *cit_grid_3km.dat*. The format is as shown in Table 4.

Here *nx* and *ny* are used to define the horizontal dimensions of the emission grid system; *x0* and *y0* define the SW corner of the SW cell (cell 1,1) of the grid (m); *dx* and *dy* define the horizontal grid spacing (m). Note that each emission grid (area source, motor vehicle and industrial) must use the grid system as defined by the parameters given above.

USER INPUT FILES

Note that only the grid definition data on line 5 are used by the CTM pre-processor.

Table 4 Structure of a cit_grid_dx.dat file

CIT header file for time date and grid data – comment line
Time [yy mm dd hh] –comment line
2004 07 01 00
nx ny x0(m) y0(m) dx(m) dy(m) top(m) lat0, long0, AMG zone – comment line
60 70 243000 6195000 3000 3000 2000 -35.0 150.75 56
Latitude (deg) longitude (deg) time zone –comment line
-35.0 150.75 10
Number of vertical layers –comment line
10
CIT fractional vertical spacing – comment line:
0.0125 0.025 0.0375 0.05 0.05 0.05 0.075 0.10 0.20 0.40

Area source, industrial source and motor vehicle source emission files are typically named according to the following convention.

- *pems_chemistry_dx_scenario.in*,
- *aems_chemistry_dx_scenario.in*,
- *mvems_chemistry_dx_scenario.in*.

For an example, *aems_lcc_3km_basecase.in* is an area source emission file with 3 km grid spacing, speciated according to the LCC chemistry scheme, and with emissions representative of a business-as-usual scenario. The format of these files is similar to the standard CIT model convention (McRae et al. 1992), and is discussed below.

Emissions can be provided for one or more days. If a TAPM–CTM integration period is for longer than the number of days present in a given emission file then the file is rewound and emissions are re-read from the top of the file. Such an approach provides the potential for modelling daily-varying emissions. Note too that it is not necessary for all of the emission files to have the same number of days of data. For example, the *pems* file could contain a single day of emissions while the *aems* file could contain 7 days and thus include a weekday-weekend cycle.

For area source emission files (i.e. *aems* and *mvems* files) the file structure is as shown in Table 5. Explanatory notes are given in brackets. This structure includes the following records.

- A descriptive text header (ends with a line containing * in the 1st column).

- The number of emission species.
- Ranking, species code name and molecular weight.
- For each hour of the day and for each grid cell containing non-zero emissions, a code letter for ground level sources (G), hour, coordinates in grid units in the x and y direction and species emission rates of each species in units of parts-per-million per minute (ppmV min^{-1}) for a grid cell of 1 m depth.

A coordinate of 999, 999 is used to flag the end of an hour.

Note that the molecular weight field is not a standard CIT field. Molecular weight been added in order to allow the emissions files to be used with alternative chemical mechanisms. Note too that the same number and ordering of species and species names must reside in each emissions file.

Additionally, note that species names are case sensitive and are only processed by TAPM-CTM if a match is found with a species name from the **Master Species List** for the selected chemical transformation mechanism (see Appendix A of Cope 2009).

The emissions structure presented in Table 5 can be created using the following code construct.

```

Loop days = 1, ndays
  Loop hour = 1, 24
    Loop row = 1 to ny
      Loop col = 1 to nx

        IF(any species (col,row,hour,day) > 0)WRITE hour, col,
row, all species (col, row)

      End Loop !nx
    End Loop !ny
    WRITE hour,999
  End Loop !hour
End Loop !days

```

USER INPUT FILES

Table 5 File structure for a CIT area source emissions file

<p>DESCRIPTIVE HEADER MAQS surface-level emissions inventory. This version of the inventory is for 20070206 BASECASE 3km version * (Indicates the end of comment lines) 19 (Number of species- here it is defined for the LCC scheme) 1 NO 30.0 (Number of entry, species name, molecular weight) 2 NO2 46.0 (The species may be given in any order) 3 CO 28.0 (This is read by a generic Fortran format, but name is defined as 4 char) 4 SO2 64.1 5 PART 1.0 6 ETHE 28.0 7 ALKE 47.6 8 ALKA 84.9 9 TOLU 92.0 10 AROM 111.6 11 HCHO 30.0 12 ALD2 46.0 13 MEK 72.0 14 MEOH 32.0 15 ETOH 46.0 16 ISOP 68.1 17 CIN 154.26 18 PINE 136.24 19 ROC 13.7 G 0 9 1 (G: ground level , 0 for hour, grid point in x and y direction, a1,i2,i3,i3/) 0.368E-03 0.343E-04 0.325E-02 0.125E-03 0.913E-02 0.445E-04 0.755E-04 0.465E-03 0.428E-04 0.391E-04 0.738E-05 0.128E-05 0.463E-05 0.000E+00 0.416E-04 0.000E+00 0.000E+00 0.000E+00 0.250E-04 (19 continuous entries by 8e10.3) G 0 10 1 0.101E-05 0.112E-06 0.855E-05 0.392E-07 0.188E-05 0.694E-07 0.903E-07 0.775E-06 0.786E-07 0.338E-07 0.691E-08 0.159E-08 0.769E-09 0.000E+00 0.000E+00 0.000E+00 0.000E+00 0.000E+00 0.393E-07 G23999999 (G:ground level , 23 for hour, x and y grid 999 mean the end of the file) 0.000E+00 0.000E+00 0.000E+00 0.000E+00 0.000E+00 0.000E+00 0.000E+00 0.000E+00 0.000E+00 0.000E+00 0.000E+00 0.000E+00 0.000E+00 0.000E+00 0.000E+00 0.000E+00 0.000E+00 0.000E+00 0.000E+00</p>

The elevated point source emission file (*pems*) has the following structure (Table 6).

- descriptive text (ends when a line containing * in the 1st column is read),
- number of species (depends on chemistry scheme selected),

- number, species code name and *molecular weight*,
- code of elevated sources (E), hour, coordinates in x and y direction , point source identification number, stack height in meter, stack diameter in meter, exhaust gas temperature in Celsius, exhaust gas flow rate in m³ per second, and an emission flux per unit cell height for each species in ppmV min⁻¹.

Again a coordinate number = 999 flags the end of an hour.

Table 6 Structure of a CIT elevated point source file

DESCRIPTIVE HEADER	
MAQS Point source industrial emissions file. This version of the inventory is for a Sydney high oxidant day, 2007. 3km version]	
*	(Indicates the end of comment lines)
19	(Number of species- it is for LCC scheme)
1 NO 30.0	(Number of entry, species name, molecular weight)
2 NO2 46.0	(The species may be listed in any order)
3 CO 28.0	(This is read by a generic Fortran format, but name is defined as 4char)
4 SO2 64.1	
5 PART 1.0	
6 ETHE 28.0	
7 ALKE 47.6	
8 ALKA 84.9	
9 TOLU 92.0	
10 AROM 111.6	
11 HCHO 30.0	
12 ALD2 46.0	
13 MEK 72.0	
14 MEOH 32.0	
15 ETOH 46.0	
16 ISOP 68.1	
17 CIN 154.26	
18 PINE 136.24	
19 ROC 13.7	
E 0 31 14 772 66.3 4.2 180.0 140.7 335.0 6234.1	
0.224E-01 0.118E-02 0.125E-01 0.244E-03 0.132E+00 0.148E-04 0.547E-04 0.165E-03	
0.123E-04 0.941E-05 0.635E-04 0.000E+00 0.000E+00 0.000E+00 0.000E+00 0.000E+00	
0.000E+00 0.000E+00 0.952E-05	
.....	
(23 for hour, x and y grid 999 mean the end of the file)	
E23999999 999 999.0 999.0 999.0 999.0 999.0 999.0 etc.	

E: code for elevated sources (a1)
 0: hour (i2)
 31, 14: grid coordinates (2i3)
 772: identification number
 66.3: stack hight in m (f8.1)
 4.2: stack diameter in m (f8.1)
 180.0: exhaust gas temp (°C) (f8.1)
 140.7: gas flow rate (m³ s⁻¹) (f8.1/
 335.0 6234 (source location [optional])
 On next line 19 entries (8e10.3) of flux of each species in ppmV min⁻¹

4.3 CTM Format Emission files

The CTM emission files are based on the TAPM format area source and elevated point source file formats. A description of the various source types are given in Table 7. Some of the source types are prescribed at a standard temperature and temperature correction factors are then applied at every time step and grid point within the CTM to estimate emissions for the local environmental conditions. The user is referred to Hurley (2008a) for a description of the emission–temperature functions (.vpx; .vpv; .whe) and the plume rise algorithms (for .pse).

Table 7 Summary of the TAPM emission source groups treated by TAPM–CTM

Source group	Filename extension	Temperature dependency?
Motor vehicle petrol-fuelled exhaust emissions	.vpx	Yes. NO _x , VOC and CO ¹ . T(standard) = 25°C
Motor vehicle diesel-fuelled exhaust emissions	.vdx	No
Motor LPG-fuelled exhaust emissions	.vlx	No
Motor vehicle petrol-fuelled evaporative emissions	.vpv	Yes. VOC. T(standard) = 27°C
Commercial-domestic emissions; generic area source emissions	.gse	No
Wood heater emissions	.whe	Yes. PM ² . T(standard; daily) = 10°C
Industrial elevated point source emissions	.pse	Yes. Momentum and buoyancy forced plume rise. All species.

¹NO_x- oxides of nitrogen (nitric oxide + nitrogen dioxide); VOC (volatile organic compounds); CO (carbon monoxide). ²PM (particulate matter).

The format of the area source files (all but .pse) is as follows are similar to those of the TAPM files as described in Hurley (2008a) with the exception that the CTM files contains an additional text information header and species list description (as described in Section 4.2 for the CIT format emission files). Additionally, the CTM formatted emission files include emission rates for all species included in the species list description rather than the fixed

numbers of species contained in the TAPM emission files. The CTM area source files have the following format.

1. A descriptive text header (ends with a line containing * in the 1st column).
2. The number of emission species (ns).
3. Number, species code name (case sensitive) and molecular weight (g).
4. Grid description, number of east-west points (nx); number of north-south points (ny), dx-east-west grid spacing (m), dy-north source grid spacing (m), cx, cy- centre of the grid [easting (m), northing (m)].
5. For each hour of the day and for each grid cell the species emission rates of each species in units of grams per second (g s^{-1}) with emissions given for each species in the order provided in the species list.

The emissions structure can be described by the following pseudo code. Note that *ndays* can lie between 1 and the number of days of simulation. If *ndays* is less than the number of simulation days then the emission file is rewound and reading commences again from the top of the file.

```

Loop days = 1, ndays
  Loop hour = 1, 24
    Loop row = 1 to ny
      Loop col = 1 to nx

        Read (in,*) (emissions(s), s=1, ns)

      End Loop !nx
    End Loop !ny
  End Loop !hour
End Loop !days

```

An area source emission file fragment is given in Table 8. Note that each CTM emissions file has to have the same number of species in identical order. However it is possible for each file to cover a different region, have different spatial resolution and cover a different time period.

The format of a .pse file is as follows.

1. A descriptive text header (ends with a line containing * in the 1st column).
2. The number of emission species (ns).

USER INPUT FILES

3. Number, species code name (case sensitive) and molecular weight (g).
4. Number of point sources (nsource)
5. For each point source- unique identification number, easting (m), northing (m), stack height (m), stack radius (m)
6. For each hour of the day and for each point source, the plume exit velocity v_s (m/s), the plume temperature t_s (K) and the species emission rates of each species in units of grams per second ($g\ s^{-1}$) with emissions given for each species in order as defined in the species name record.

An example of a point source emission file fragment is given in Table 9.

Table 8 File structure for a CTM area source emissions file

DESCRIPTIVE HEADER Version_02 Tapm surface emissions file. Generated by AAQFSt2apmMvems v1.0 File was created (yyyymmdd): 20080305 at time (hhmmss.sss): 163441.273 GramPerSec :TAPM emission units of g/s Mvems are in a uniform grid *						
	20					
1	NO	30.0				
2	NO2	46.0				
3	CO	28.0				
4	SO2	64.1				
5	PM10	1.0				
6	ETHE	28.0				
7	ALKE	47.6				
8	ALKA	84.9				
9	TOLU	92.0				
10	AROM	111.6				
11	HCHO	30.0				
12	ALD2	46.0				
13	MEK	72.0				
14	MEOH	32.0				
15	ETOH	46.0				
16	ISOP	68.1				
17	CIN	154.3				
18	PINE	136.2				
19	ROC	1.0				
20	CO_E	28.0				
210	273	1000.000	1000.000	314500.000	6295000.000	
		.000E+00	0.000E+00	0.000E+00	0.000E+00	.000E+00
		0.000E+00	0.000E+00	0.000E+00	.000E+00	0.000E+00
		0.000E+00	0.000E+00	.000E+00	0.000E+00	0.000E+00
		0.000E+00	0.000E+00			

Descriptive header

List of species names
and molecular weights

Grid description
(nx, ny, dx, dy, cx, cy)

Emissions (g/s) for 20
species for point (1,1)-
[SW corner]; of hour 1
of day 1

Table 9 File structure for a CTM point source emissions file

```

DESCRIPTIVE HEADER
Version_02
Tapm surface emissions file. Generated by AAQFSt2apmMvems v1.0
File was created (yyyymmdd): 20080305 at time (hhmmss.sss):
163441.273
GramPerSec :TAPM emission units of g/s
Mvems are in a uniform grid
*
    20
 1 NO   30.0
 2 NO2  46.0
 3 CO   28.0
 4 SO2  64.1
 5 PM10 1.0
 6 ETHE 28.0
 7 ALKE 47.6
 8 ALKA 84.9
 9 TOLU 92.0
10 AROM 111.6
11 HCHO 30.0
12 ALD2 46.0
13 MEK  72.0
14 MEOH 32.0
15 ETOH
16 ISOP
17 CIN  1
18 PINE 156.2
19 ROC  1.0
20 CO_E 28.0
118 24
772 335000.00 6234100.00 66.30 2.10 1.00 0.00 0.00
773 335100.00 6234100.00
774 335100.00 6234000.00
775 335200.00 6233900.00
776 335000.00 6233900.00
777 335000.00 6234200.00
.....
.....
0.102E+02 0.453E+03 0.413E+01 0.333E+00 0.216E+01 0.962E-01
0.805E+00 0.254E-02 0.160E-01 0.863E-01 0.696E-02 0.645E-02
0.117E-01 0.000E+00 0.000E+00 0.000E+00 0.000E+00 0.000E+00
0.000E+00 0.000E+00 0.584E-04 0.216E+01
 0.230E+02 0.469E+03 0.413E+01 0.333E+00 0.216E+01 0.962E-01
0.805E+00 0.254E-02 0.160E-01 0.863E-01 0.696E-02 0.645E-02
0.117E-01 0.000E+00 0.000E+00 0.000E+00 0.000E+00 0.000E+00
0.000E+00 0.000E+00 0.584E-04 0.216E+01
 0.136E+02 0.700E+03 0.468E+01 0.380E+00 0.244E+01 0.109E+00
0.914E+00 0.290E-02 0.180E-01 0.978E-01 0.791E-02 0.731E-02
0.133E-01 0.000E+00 0.000E+00 0.000E+00 0.000E+00 0.000E+00
0.000E+00 0.000E+00 0.662E-04 0.244E+01

```

5. DISPLAY FILES

Graphical display of the meteorological and concentrations fields in the *NetCDF* data packets using the data display system (Section 7) optionally requires that the user input a line-segment file for identifying relevant boundaries (i.e. land/sea interfaces), and a localities file for identifying the names and locations of important sites. The line-segment file has the generic name *lineSegments.[csv;txt]*. The line segment file consists of line segment objects (see Table 10). Each object consists of a series of connected straight-line segments. The start of a new line segment object is flagged with ‘999 999’ and red, blue, green (RGB) components which are used to colour each line segment object. In the example given in Table 10, the first line segment object is coloured white and the second object is coloured red. Coordinates should be listed in metres.

Table 10 Example of line-segment display file

<pre>Header record 999. 999. 1.0 1.0 1.0 132000. 155000. (listing Easting position first [m]) 132000. 157400. 132000. 159500. ... 999. 999. 1.0 0.0 0.0 234500 644000. 234500 655500.</pre>
--

The localities file has the generic name *locations.[csv;txt]*. Each locality is identified by an easting and northing (m), and name (see Table 11). A maximum length of a locality name is 12 characters.

Table 11 Example of locality display file

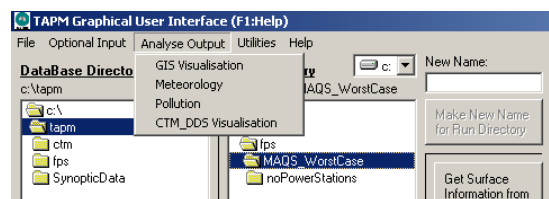
<pre>Header record 323800 5801500 Brighton 326500 5816800 Alphington</pre>
--

6. TEXT FILES GENERATED BY THE CTM

In addition to the *NetCDF* files, TAPM–CTM also generates output files which document the simulation, including the runtime parameters of the simulation, debug information and CPU timing information. The files are named ‘*CTM_chemistry_scenario.lis#*’ for the runtime information, where *chemistry* and *scenario* are those selected using the GUI. For example, if the CB05 mechanism was selected for the simulation and a base case emissions inventory was used, TAPM–CTM would generate the files *CTM_cb05_basecase.lis1* and *CTM_cb05_basecase.lis2*, for a two grid simulation. The debug file has the generic name *CTM_debug.txt#*, and the CPU timing file has the generic name *CTM_timing.txt#*.

7. DISPLAY OF DATA IN *NETCDF* FILES

Air quality, emissions and meteorological data from TAPM–CTM can be displayed using a GUI-driven display system (CTM-DDS- Figure 19; also see CTM-DDS online help file). The display system may be accessed from the *Analyse Output* menu of the TAPM GUI. Alternative CTM-DDS may be started by double-clicking on the relevant *NetCDF* data packet using the mouse. CTM-DDS generates 2-dimensional animations of pollutant, emissions and meteorological fields. In addition, CTM-DDS can also be used to generate time series plots of observed and modelled meteorological and air pollutant parameters. Such data can then be used to verify the performance of TAPM–CTM.



In order to undertake this validation, observed air quality and meteorological data sets need to be converted into a *NetCDF* file format which can be read by CTM-DDS. This is done using a file conversion program which is run by double-clicking on a configuration file with the generic name *ctmArchive.cobs*. The configuration file lists the observation day; the name of the air quality and meteorological observation file (usually an Excel .csv file); the number of observing stations and air quality species; and the location for the *yyyymmdd00_obs.nc* file. The format of the configuration file is given in Table 12.

DISPLAY OF DATA IN NETCDF FILES

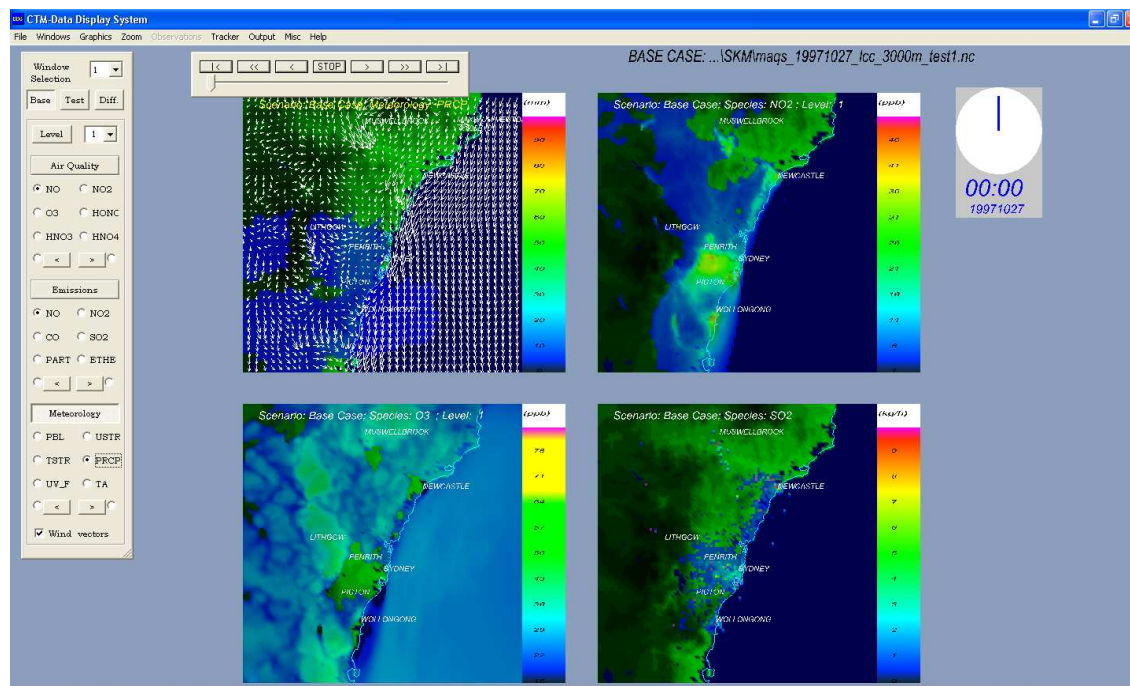


Figure 19 Example of the CTM data display system.

Note that it is important that the configuration file have the extension *.cobs* in order to ensure that Windows can identify the correct program to run. Also note that it is important to ensure that the names and order of the species listed in the configuration file (Table 12), exactly match those given in the observation data file. The order and number of meteorological parameters is fixed.

In the example given in Table 12, the air quality and meteorological observations are contained in *qldaq.csv*. The format of this file is given in Table 13.

The data entry should be in an order as given in the header line; year, month, day, monitoring station identification number, station name, station location in easting then northing (m), hour, wind speed (m s^{-1}), wind direction, ambient air temperature ($^{\circ}\text{C}$), water vapour mixing ratio (kg kg^{-1}), planetary boundary-layer height (m), then species concentration in the same order as in the configuration file. Year, month, day, station id and hour are defined as integer. Hour should start from 0 not 1 and is start-of-hour in local standard time. Station name can have up to 20 characters. The rest are free format. If there are no observed values, enter -99. The values listed below are dummy values.

Table 12 Structure of the ctm archive.cobs file

Enter yy mm dd ndays	(comment line)
2002 2 25 10	
Enter the number of AQ stations	(comment line)
12	
Enter number of species	(it should match the list of species names)
9	
Enter name of species	(observed air quality data should be in the same order as given here)
NO	
NO2	
NOY	
O3	
CO	
SO2	
NEPH	
PM25	
PM10	
Enter output path	(path where NetCDF observation file will reside- should reside)
c:\postp-tapm-ctm\	(with the TAPM-CTM .nc files)
AQ input filename	(name of observed air quality text-based data file)
c:\postp-tapm-ctm\qldaq.dat	
Scale factors (optional). For each pollutant factor to go to ppb (gas) and ug/m3 (aerosol)	
1.0 1.0 1.0 1.0 1.0 1.0 1.0 1.0 1.0	

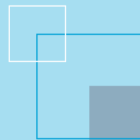
DISPLAY OF DATA IN NETCDF FILES

Table 13 Structure of the .csv observational data file.

```
year, month, day, stn_id, stn_name, easting, northing, hour, ws (m/s), wd (deg), Tdry (degC), mr (kg/kg), pbl (m), NO, NO2,  
NOY, O3, CO, SO2, PM10, PM2.5 (on one line)  
2002 2 25 33 Brisbane 337500 6244200 0 2.92 114.60 21.1 0.010 81 0.00 0.00 0.00 2.77 -99 5.0 0.17 21.9 -99  
2002 2 25 33 Brisbane 337500 6244200 1 2.35 109.00 20.9 0.012 90 0.00 0.00 0.00 2.75 -99 5.0 0.17 21.8 -99  
2002 2 25 33 Brisbane 337500 6244200 2 1.87 99.82 19.2 0.015 120.0 00.0.00 0.00 2.64 -99 5.0 0.17 22.9 -99. (on one  
line)  
....  
....  
....  
2002 2 25 33 Griffith 397500 6284200 1 2.35 109.00 20.9 0.012 90 0.00 0.00 0.00 2.83 -999. 5.0 0.17 21.83 -99  
-....
```

8. REFERENCES

- Cope M. Lee, S., Noonan J., Lilley B., Hess, D., Azzi M., 2009. Chemical Transport Model Technical Description. CSIRO Marine and Atmospheric Research Internal Report.
- Harley R.A., Russell A.G., McRae G.J., Cass G.R. & Seinfeld J.H., 1993. Photochemical modelling of the southern California air quality study. *Environ. Sci. Technol.*, **27**:378-388.
- Hurley, P. J., TAPM V4. User Manual, 2008a, CSIRO Marine and Atmospheric Research Internal Report No. 5. ISBN: 978-1-921424-73-1
- Hurley P., 2008b. TAPM v4. Part 1: Technical Description. CSIRO Marine and Atmospheric Research. ISBN: 978-1-921424-71-7. ISSN: 1835-1476.
- Lurmann F.W., Carter W.P. and Coyner L.A., 1987. A surrogate species chemical reaction mechanism for urban scale air quality simulation models. *Final report to U.S. Environment Protection Agency under Contract Number 68-02-4104.*
- McRae, G.J., Russell, A. M., Harley, R. A., CIT Photochemical Airshed Model-Systems Manual, 1992, California Institute of Technology.
- Yarwood G., Rao S., Yocke M., Whitten G., 2005. Updates to the Carbon Bond chemical mechanism.: CB05. Final report RT-04-00675 to U.S. Environmental Protection Agency, Research Triangle Park, NC 27703.



The Centre for Australian Weather and Climate Research is a partnership between CSIRO and the Bureau of Meteorology.