

In situ habitat images taken on seamounts off southern Tasmania



Mongrel 847 m (ops 22)



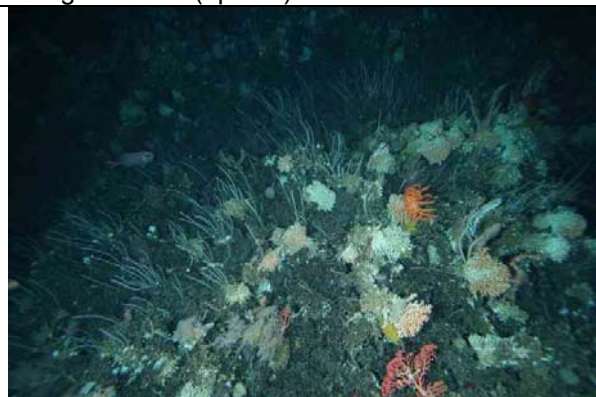
Mongrel 784 m (ops 22)



Mongrel 786 m (ops 22)



z16 1291 m (ops 37)



Dory Hill 1111 m (ops 24)



Dory Hill 1114 m (ops 24)



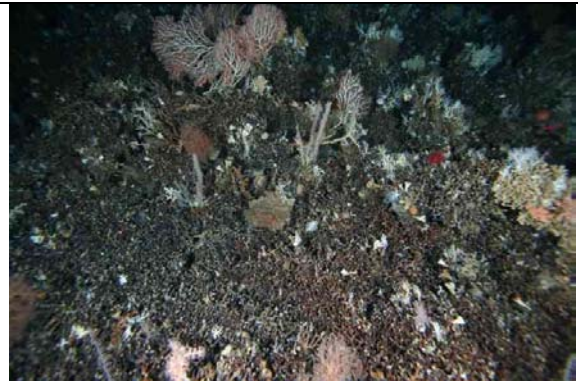
Dory Hill 1118 m (ops 24)



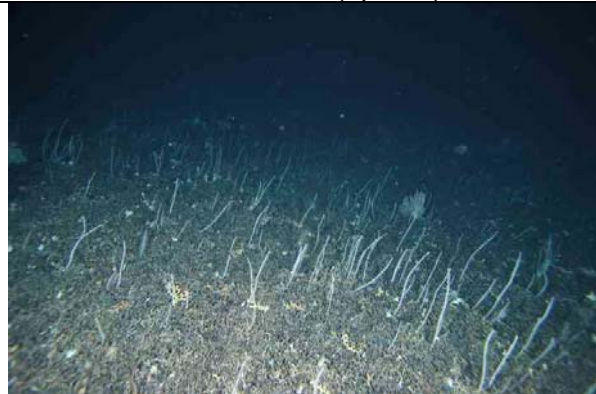
Dory Hill 1453 m (ops 24)



Huon 1000 – SE, 706 m (ops 47)



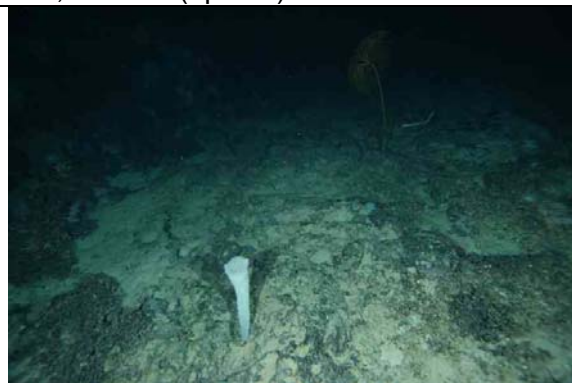
Sister 2, 1154 m (034 200350) (ops34)



z15, 1127 m (ops 28)



z15, 1304 m (ops 28)



z24, 1362 m (ops 29)



Hill K1, 1289 m (ops 40)



Hill K1, 1400 m (ops 31)



Hill K1, 1679 m (ops(30))



Hill U, 1320 m (ops38)



Hill U, 1435 m (ops 38)



Hill U, 1467 m (ops 38)



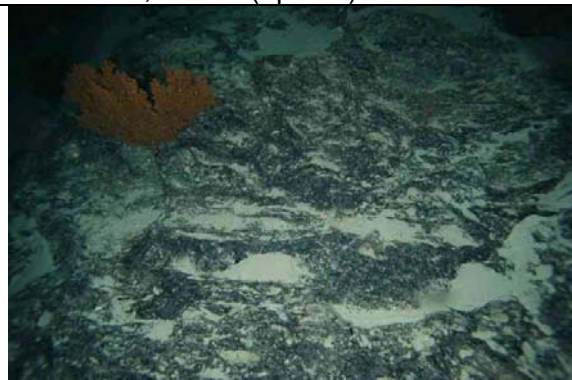
Hill U, 1499 m (ops 23)



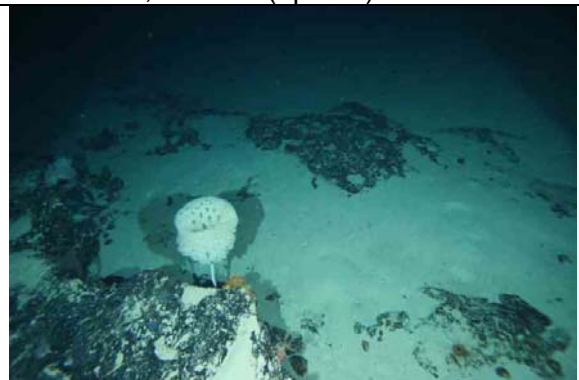
Main Matt, 773 m (ops 71)



Main Matt, 1105 m (ops 71)



Tas. Fracture – 1000 H, 1200 m(ops 73)



Nancy's Peak, 1563 m (ops 74)