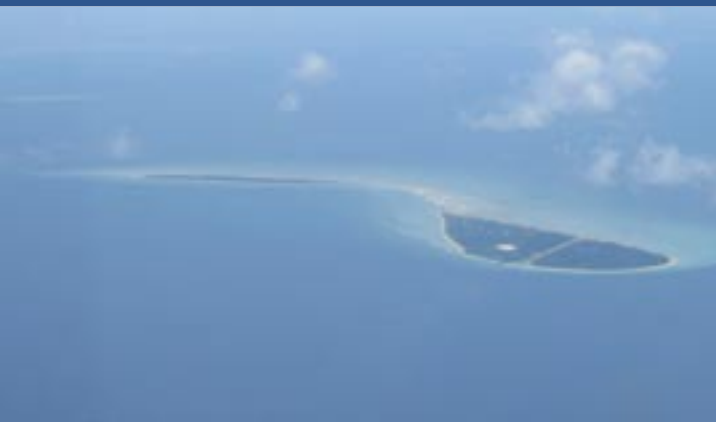


**CRC Torres Strait will provide information to better manage marine resources in the region and support Torres Strait Communities**



**Research will:**

- Support sustainable development of marine resources and minimise impacts of resource use in Torres Strait.
- Enhance the conservation of the marine environment and the social, cultural and economic well being of all stakeholders, in particular the Torres Strait peoples.
- Contribute to effective policy formulation and management decision making.

**For more information contact:**

**CRC Torres Strait**  
**PO Box 772**  
**Townsville 4810**

**Ph: 07 4729 8400**  
**Fax: 07 4729 8499**  
**Email: [info@crctorres.com](mailto:info@crctorres.com)**  
**Website: [www.crctorres.com](http://www.crctorres.com)**



Photo courtesy of CSIRO

CRC Torres Strait Ltd is a not-for-profit company established to implement the Torres Strait research program supplementary to the Cooperative Research Centre for the Great Barrier Reef World Heritage Area (incorporated as CRC Reef Research Centre Ltd).

It is supported by the Australian Government Cooperative Research Centres Program.



Members of CRC Torres Strait Ltd are:

- Australian Fisheries Management Authority
- Australian Institute of Marine Science
- CRC Reef Research Centre Ltd
- CSIRO
- Geoscience Australia
- James Cook University
- National Oceans Office
- Queensland Department of Primary Industries and Fisheries
- Torres Strait Regional Authority

Supporting partners are:

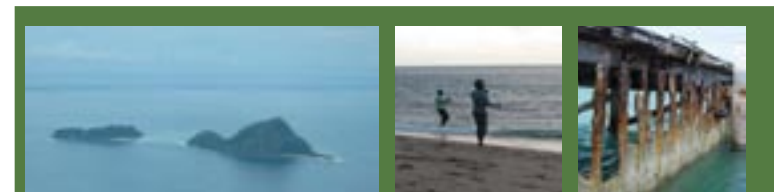
- Great Barrier Reef Marine Park Authority
- Great Barrier Reef Research Foundation
- Queensland Seafood Industry Association

All photographs from CRC Torres Strait unless otherwise acknowledged

# CRC TORRES STRAIT



## 2003-2004 HIGHLIGHTS



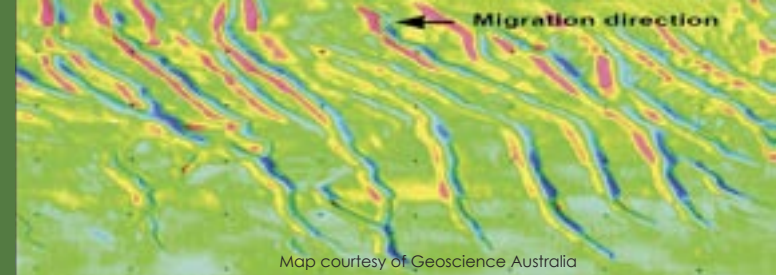
# CRC Torres Strait

## 2003 - 2004 HIGHLIGHTS



CRC Torres Strait research began in 2003.

Nineteen project are already underway with positive results for Torres Strait.



Photograph courtesy of AIMS

Information about catch of Spanish mackerel by commercial Islander fishers has been collected and is being reviewed. This information is essential for management of this important fishery.



Photograph courtesy of DPI&F

Thursday Island harbour surveyed for introduced marine pests.

An initial analysis of samples found no introduced marine pests. This study will provide a baseline for more surveys.

Mobile underwater sand dunes discovered that may affect seagrass distribution in Torres Strait.



Thursday Island High School and TAFE students take part in Seagrass Watch Program. Students are monitoring the health of seagrass beds at Back Beach on Thursday island which are critical to dugong and turtle.

Marine research in Torres Strait greatly enhanced by the appointment of **Toshi Nakata** as Marine Research Liaison Officer.



To look after Torres Strait, Islanders, managers and other stakeholders need accurate information about the animals and plants that live in Torres Strait, how they work together with the oceans, currents and habitats, and what effects we are having on the environment. This information helps in making good choices for managing Torres Strait marine resources.

CRC Torres Strait is committed to working with Islanders, managers and other stakeholders to provide collaborative research that is relevant to Torres Strait.

A survey of Torres Strait discovered a sponge with excellent prospects for culture as a bath sponge. Culture trials will begin on Masig Island soon.



Photograph courtesy of AIMS



Photograph courtesy of CSIRO

Warrior Reef sea cucumber surveys will provide essential information for future co-management of this important fishery. Information includes burrowing behaviour and habitat preference.